

DENVER, COLORADO

AL-5715 (FAA)

23334

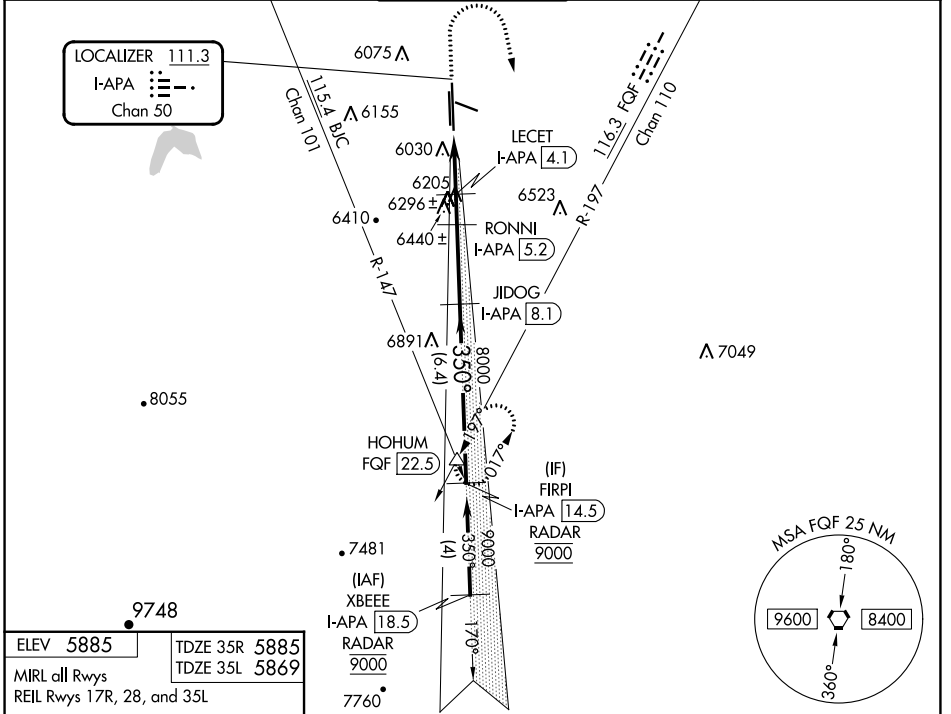
LOC/DME I-APA <b>111.3</b> Chan 50	APP CRS <b>350°</b>	Rwy Idg <b>10001</b> TDZE <b>5885</b> Apt Elev <b>5885</b>	35R <b>35L</b> <b>7001</b> <b>5869</b> <b>5885</b>
--	------------------------	---	--

# ILS or LOC RWY 35R

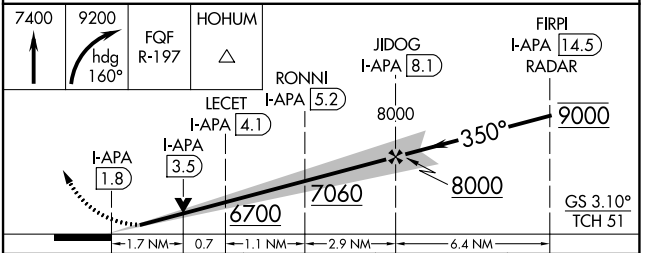
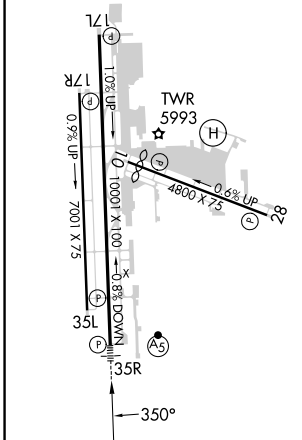
## CENTENNIAL (APA)

DME required for LOC only. RADAR required for procedure entry.		MALSR Rwy 35R	MISSED APPROACH: Climb to 7400 then climbing right turn to 9200 on heading 160° and FQF VORTAC R-197 to HOHUM INT/FQF 22.5 DME and hold.
<p><b>▼</b> Rwy 35L helicopter visibility reduction below 1 SM NA. For inop ALS, increase S-LOC 35R Cat C/D visibility to 1½ SM. Sidestep and Circling Rwy 35L NA at night.</p>			

ATIS <b>120.3</b>	DENVER APP CON <b>132.75 269.3</b>	CENTENNIAL TOWER <b>118.9</b>	GND CON <b>121.8</b>	CLNC DEL <b>128.6</b>
----------------------	---------------------------------------	----------------------------------	-------------------------	--------------------------



ELEV 5885	TDZE 35R 5885
MIRL all Rwys	TDZE 35L 5869
REIL Rwy 17R, 28, and 35L	



CATEGORY	A	B	C	D
S-ILS 35R	6085-½ 200 (200-½)			
S-LOC 35R	6460-½	575 (600-½)	6460-1¼	575 (600-1¼)
SIDESTEP 35L	6460-1	591 (600-1)	6460-1½	6460-2 591 (600-2)
CIRCLING	6460-1 575 (600-1)	6540-1 655 (700-1)	6740-2½ 855 (900-2½)	6760-2¾ 875 (900-2¾)

DENVER, COLORADO  
Amdt 11B 23FEB23

39°34'N-104°51'W

# CENTENNIAL (APA)

## ILS or LOC RWY 35R

SW-1, 16 MAY 2024 to 13 JUN 2024

SW-1, 16 MAY 2024 to 13 JUN 2024