

DENVER DEP CON
132.75 269.3
ATIS
120.3
CLNC DEL
128.6

**TOP ALTITUDE:
ASSIGNED BY ATC**

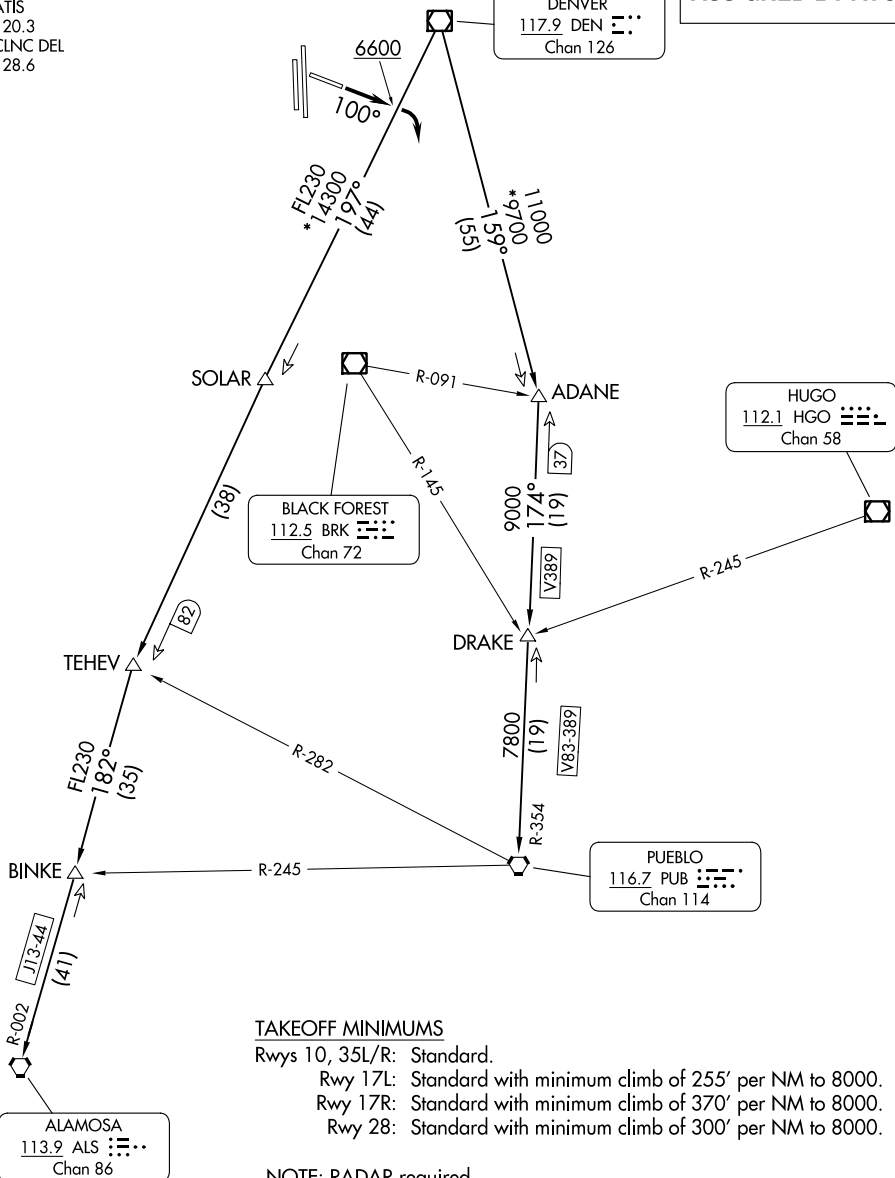
DENVER
117.9 DEN :...:
Chan 126

HUGO
112.1 HGO :...:
Chan 58

BLACK FOREST
112.5 BRK :...:
Chan 72

PUEBLO
116.7 PUB :...:
Chan 114

ALAMOSA
113.9 ALS :...:
Chan 86



TAKEOFF MINIMUMS

- Rwys 10, 35L/R: Standard.
- Rwy 17L: Standard with minimum climb of 255' per NM to 8000.
- Rwy 17R: Standard with minimum climb of 370' per NM to 8000.
- Rwy 28: Standard with minimum climb of 300' per NM to 8000.

NOTE: RADAR required.

NOTE: Chart not to scale.

(CONTINUED ON FOLLOWING PAGE)

SW-1, 16 MAY 2024 to 13 JUN 2024

SW-1, 16 MAY 2024 to 13 JUN 2024