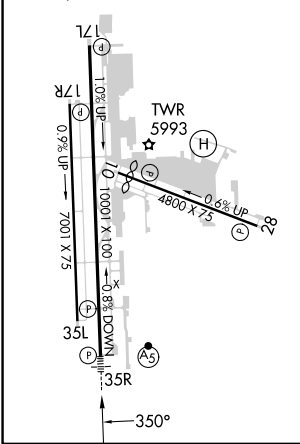
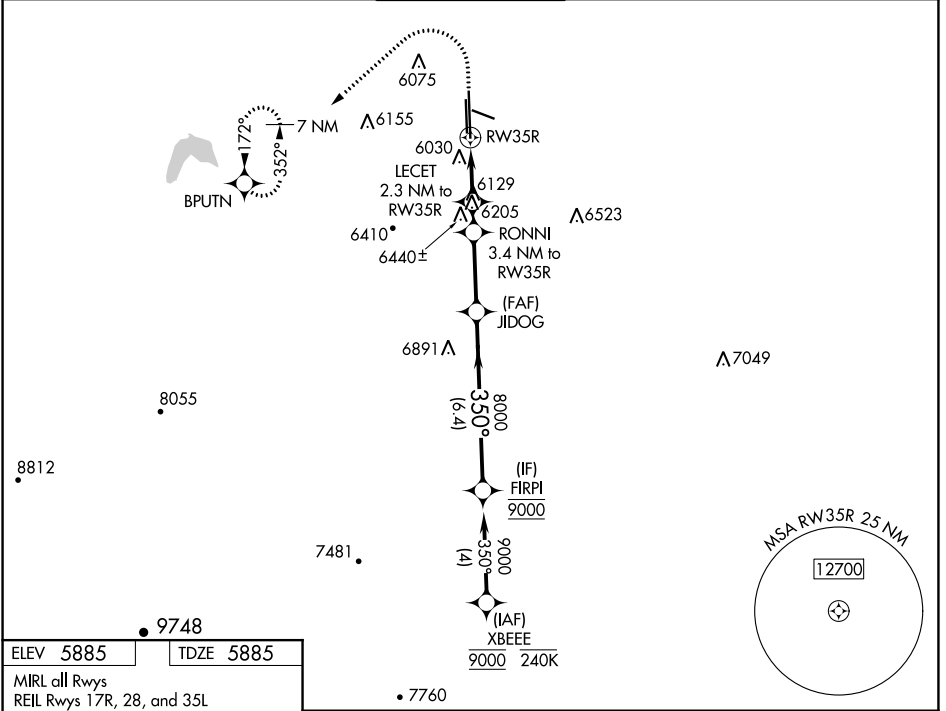


WAAS CH 40339 W35A	APP CRS 350°	Rwy Idg TDZE Apt Elev	10001 5885 5885
--	------------------------	-----------------------------	--

RNAV (GPS) RWY 35R

CENTENNIAL (APA)

RNP APCH.		MALSRL	MISSED APPROACH: (Do not exceed 240K until BPUTN) Climb to 8200 then climbing left turn to 9600 direct BPUTN and hold.	
<p>▽ Circling Rwy 35L NA at night. For uncompensated Baro-VNAV systems, LNAV/VNAV NA below -21°C or above 54°C. For inop ALS, increase LNAV Cats C/D visibility to 1 3/8 SM.</p> <p>▲</p>				
ATIS 120.3	DENVER APP CON 132.75 269.3	CENTENNIAL TOWER 118.9	GND CON 121.8	CLNC DEL 128.6



ELEV 5885	TDZE 5885	<p>8200 9600 BPUTN</p> <p>LE CET 2.3 NM to RW35R</p> <p>RONNI 3.4 NM to RW35R</p> <p>JIDOG 8000</p> <p>FIRPI 9000</p> <p>GP 3.10° TCH 51</p>			
<p>MIRL all Rwy</p> <p>REIL Rwy 17R, 28, and 35L</p>		<p>8200 9600 BPUTN</p> <p>LE CET 2.3 NM to RW35R</p> <p>RONNI 3.4 NM to RW35R</p> <p>JIDOG 8000</p> <p>FIRPI 9000</p> <p>GP 3.10° TCH 51</p>			
CATEGORY	A	B	C	D	
LPV DA	6085-1/2		200 (200-1/2)		
LNAV/VNAV DA	6324-3/4		439 (500-3/4)		
LNAV MDA	6380-1/2 495 (500-1/2)		6380-1 495 (500-1)		
CIRCLING	6400-1 515 (600-1)	6540-1 655 (700-1)	6740-2 1/2 855 (900-2 1/2)	6760-2 3/4 875 (900-2 3/4)	

SW-1, 16 MAY 2024 to 13 JUN 2024

SW-1, 16 MAY 2024 to 13 JUN 2024