

ROCKIES SIX DEPARTURE

AL-5715 (FAA)

CENTENNIAL (APA)
DENVER, COLORADO

TOP ALTITUDE: ASSIGNED BY ATC

RADAR required.

DENVER DEP CON
132.75 269.3
CLNC DEL
128.6

FALCON
116.3 FOF
Chan 110

DENVER
117.9 DEN
Chan 126

KREMLING
113.8 RIG
Chan 85

MEEKER
115.2 EKR
Chan 99

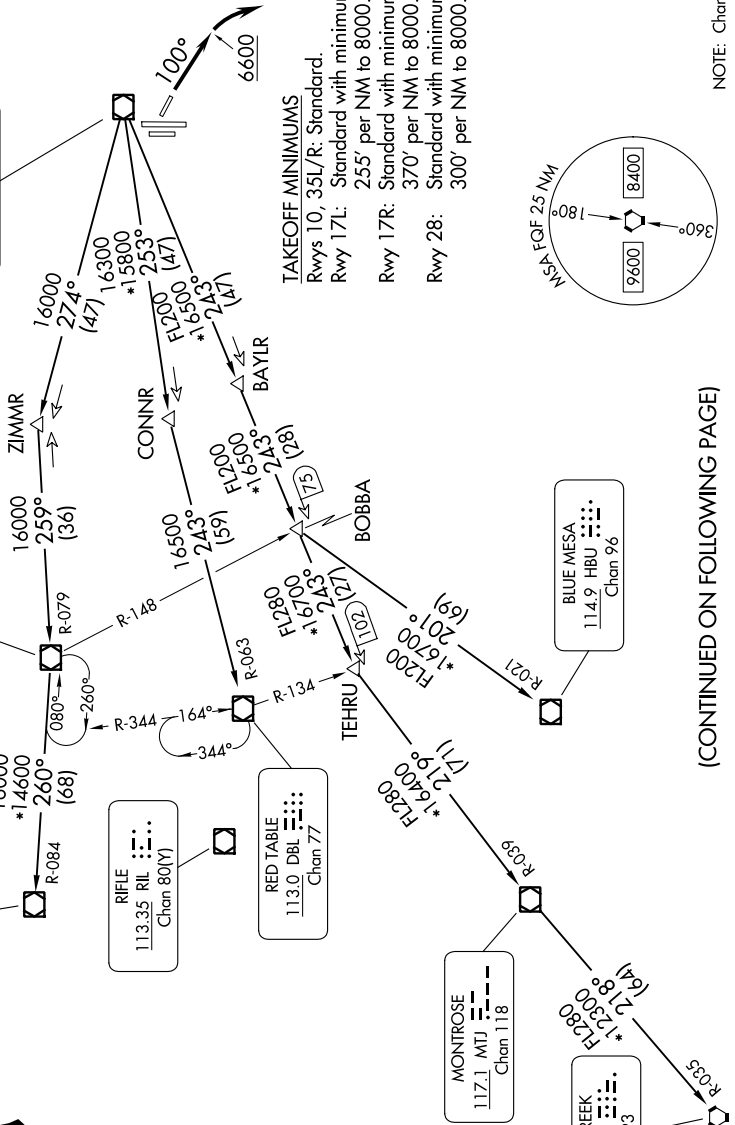
RIFLE
113.35 RIL
Chan 80(V)

RED TABLE
113.0 DBL
Chan 77

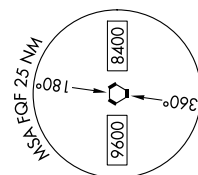
MONTROSE
117.1 MTJ
Chan 118

DOVE CREEK
114.6 DVC
Chan 93

BLUE MESA
114.9 HBU
Chan 96



TAKEOFF MINIMUMS
 Rwy 10, 35L/R: Standard.
 Rwy 17L: Standard with minimum climb of 255' per NM to 8000.
 Rwy 17R: Standard with minimum climb of 370' per NM to 8000.
 Rwy 28: Standard with minimum climb of 300' per NM to 8000.



NOTE: Chart not to scale.

(CONTINUED ON FOLLOWING PAGE)

ROCKIES SIX DEPARTURE

DENVER, COLORADO
CENTENNIAL (APA)