

| | | |
|--|------------------------|---|
| WAAS CH 58212 W01A | APP CRS 009° | Rwy Idg 5002 TDZE 473 Apt Elev 473 |
|--|------------------------|---|

RNAV (GPS) RWY 1

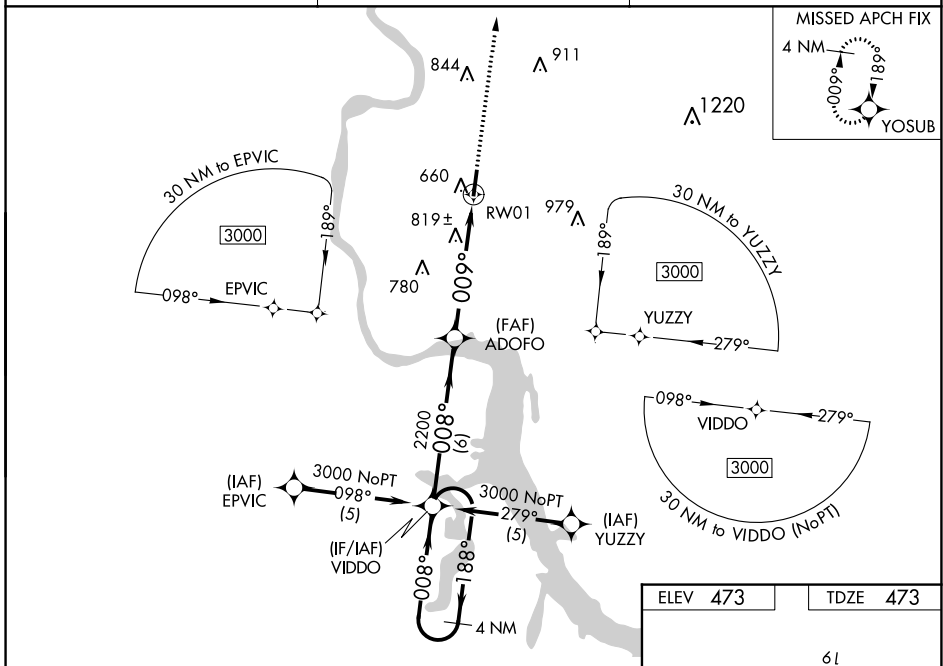
SAVANNAH-HARDIN COUNTY (SNH)

RNP APCH - GPS.

Baro-VNAV NA when using Muscle Shoals altimeter setting. For uncompensated Baro-VNAV systems, LNAV/VNAV NA below -15°C or above 54°C. Rwy 1 helicopter visibility reduction below ¾ SM NA. When local altimeter setting not received, use Muscle Shoals, AL altimeter setting and increase all DA 102 feet and all MDA 120 feet and increase LPV and LNAV/VNAV all Cats visibility ½ mile, LNAV Cat C visibility ¼ mile, Circling Cat B visibility ¼ mile and Circling Cat C visibility ½ mile. VDP NA when use Muscle Shoals altimeter setting.

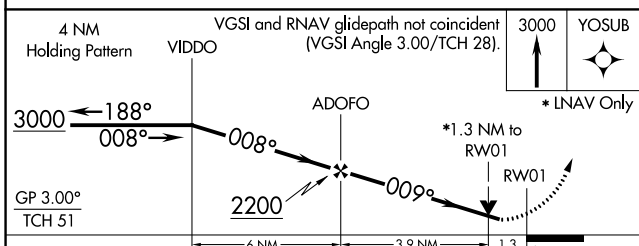
MISSED APPROACH:
Climb to 3000 direct
YOSUB and hold.

| | | |
|--------------------------|---------------------------------------|-------------------------------|
| AWOS-3 133.925 | MEMPHIS CENTER 124.35 318.1 | UNICOM 122.8 (CTAF) |
|--------------------------|---------------------------------------|-------------------------------|

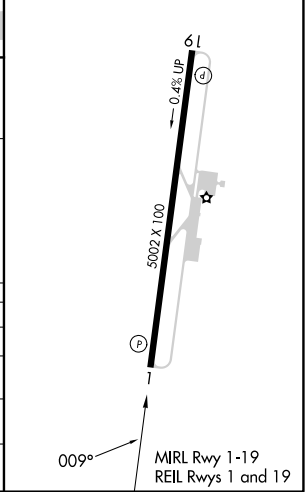


SE-1, 16 MAY 2024 to 13 JUN 2024

SE-1, 16 MAY 2024 to 13 JUN 2024



| | |
|-----------------|-----------------|
| ELEV 473 | TDZE 473 |
|-----------------|-----------------|



| CATEGORY | A | B | C | D |
|--------------|---------|--------------|-------------------------|----|
| LPV DA | 845-1¼ | 372 (400-1¼) | | NA |
| LNAV/VNAV DA | 1188-2½ | 715 (800-2½) | | NA |
| LNAV MDA | 1080-1 | 607 (700-1) | 1080-1¾ 607 (700-1¾) | NA |
| CIRCLING | 1100-1 | 627 (700-1) | 1140-1¾ 667 (700-1¾) | NA |