

BATAVIA, OHIO

AL-5955 (FAA)

21056

WAAS CH 82227 W22A	APP CRS 220°	Rwy Idg TDZE Apt Elev	3566 839 843
--	------------------------	-----------------------------	---

RNAV (GPS) RWY 22

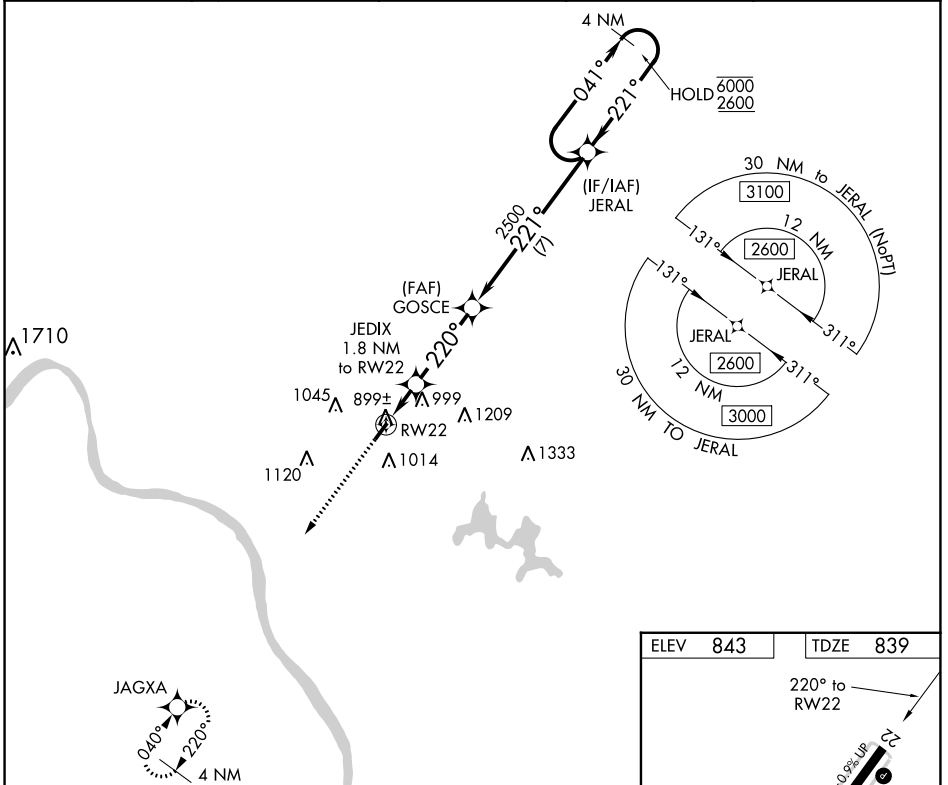
CLERMONT COUNTY (I69)

RNP APCH.

⚠ Circling Rwy 4 NA at night.
⚠ Rwy 22 helicopter visibility reduction below 1 SM NA.

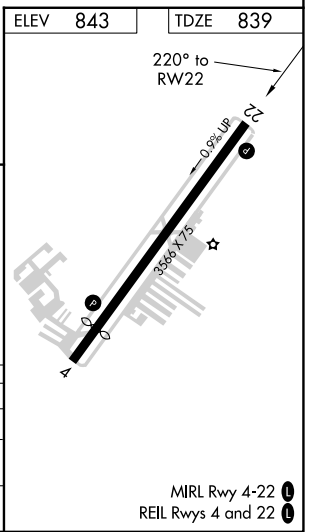
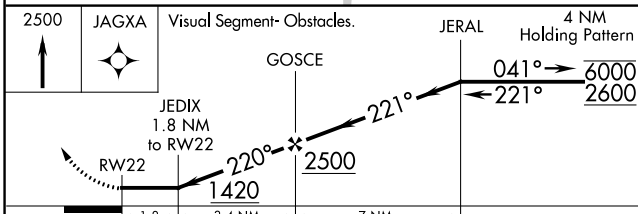
MISSED APPROACH: Climb to 2500 direct JAGXA and hold.

AWOS-3 127.275	CINCINNATI APP CON 121.0 254.25	CLNC DEL 124.9	UNICOM 122.975 (CTAF) ①
--------------------------	---	--------------------------	--



EC-2, 16 MAY 2024 to 13 JUN 2024

EC-2, 16 MAY 2024 to 13 JUN 2024



CATEGORY	A	B	C	D
LP MDA	1160-1 321 (400-1)			NA
LNAV MDA	1240-1	401 (400-1)	1240-1½ 401 (400-1½)	NA
ⓐ CIRCLING	1320-1 477 (500-1)	1360-1 517 (600-1)	1520-2 677 (700-2)	NA

BATAVIA, OHIO
Amdt 2 25FEB21

39°05'N-84°13'W

RNAV (GPS) RWY 22

CLERMONT COUNTY (I69)