

APP CRS <b>235°</b>	Rwy ldg TDZE Apt Elev	<b>3999</b> <b>566</b> <b>566</b>
------------------------	-----------------------------	---

# RNAV (GPS) RWY 23

GALLIA-MEIGS RGNL (GAS)

RNP APCH-GPS.

**⚠** NA Helicopter visibility reduction below 1 SM NA.  
**⚠** NA Procedure NA at night.

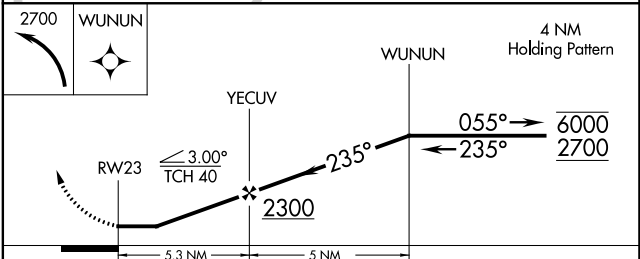
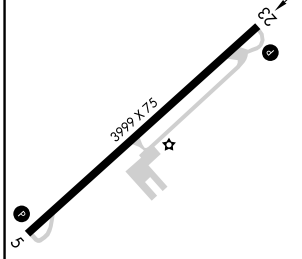
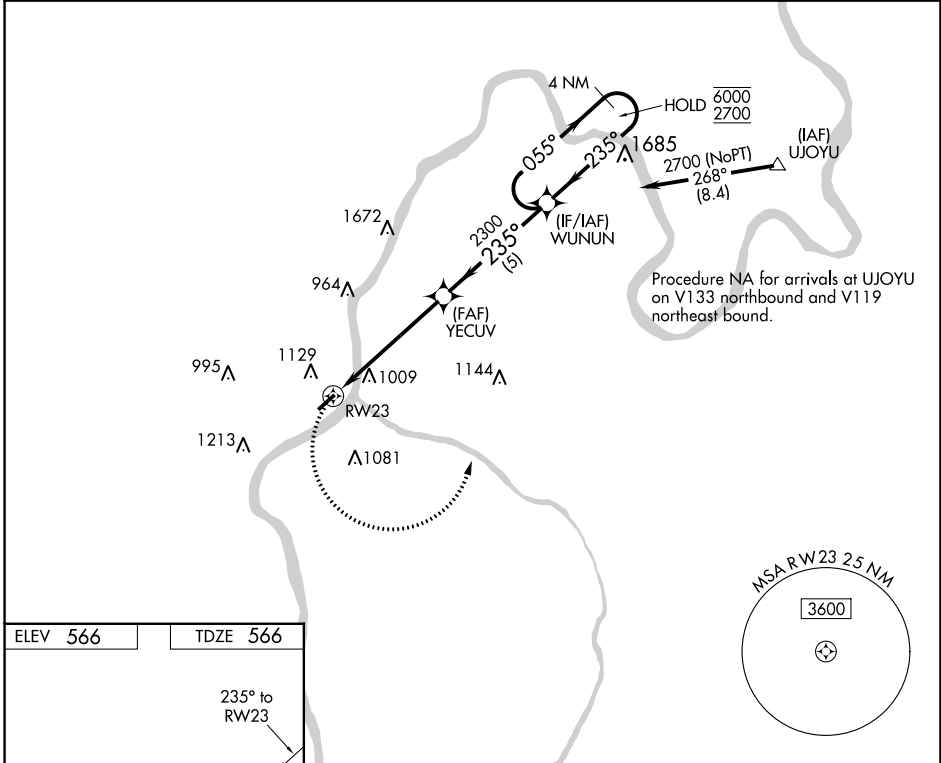
MISSED APPROACH:  
 Climbing left turn to 2700  
 direct WUNUN and hold.

AWOS-3PT  
**119.925**

HUNTINGTON APP CON  
**128.4 270.1**

CLNC DEL  
**124.55**

UNICOM  
**123.0 (CTAF) 0**



ELEV 566	TDZE 566			
MIRL Rwy 5-23 0	REIL Rwy 23 0	2700 WUNUN	WUNUN	4 NM Holding Pattern
CATEGORY	A	B	C	D
LNAV MDA	1320-1 754 (800-1)	1320-1¼ 754 (800-1¼)	1320-2 754 (800-2)	NA
<b>C</b> CIRCLING	1440-1¼ 874 (900-1¼)	874 (900-1¼)	1440-2½ 874 (900-2½)	NA

EC-2, 16 MAY 2024 to 13 JUN 2024

EC-2, 16 MAY 2024 to 13 JUN 2024