

BULLDOG TWO DEPARTURE (OBSTACLE)(BLDG 2 • VISTA) CAMP PENDLETON MCAS (MUNN FLD) (KNFG) OCEANSIDE, CALIFORNIA

ATIS ★ 285.45
 CLNC DEL
 134.675 271.6
 GND CON
 134.675 360.2
 TOWER ★
 128.775 340.2
 SOCAL DEP CON
 127.3 323.0

AL-5985 [USN]

Rwy	Knots	60	120	180	240	300	360
3 (C)	V/V(fpm)	486	972	1458	1944	2430	2916
21 (B)	V/V(fpm)	442	884	1326	1768	2210	2652

Minimum Climb Rate

(C) to 800

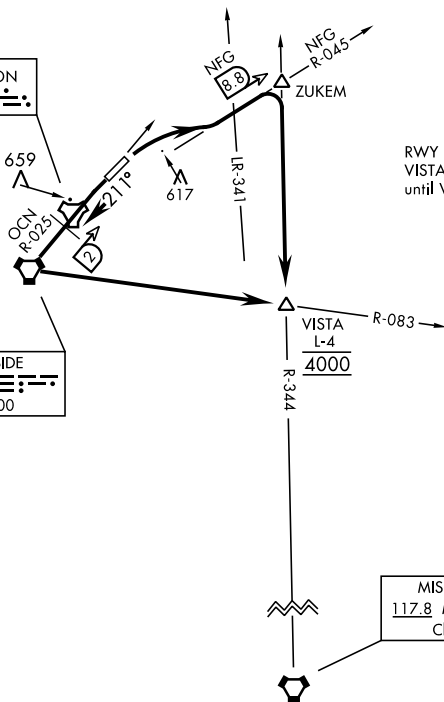
(B) to 1300

NOT FOR CIVIL USE

CAMP PENDLETON
 Chan 55 NFG

OCEANSIDE
 115.3 OCN
 Chan 100

RWY 3: RNAV required ZUKEM to VISTA. Do not exceed 240 KIAS until VISTA.



MISSION BAY
 117.8 MZB
 Chan 125

DEPARTURE ROUTE DESCRIPTION

TAKE-OFF RWY 3: Climbing right turn to intercept NFG TACAN R-045 to ZUKEM then right turn direct VISTA. Cross VISTA at 4000 or assigned altitude.

TAKE-OFF RWY 21: Climb on heading 211° to intercept OCN VORTAC R-025 then direct OCN then left turn to intercept OCN R-083 direct VISTA. Cross VISTA at 4000 or assigned altitude.

BULLDOG TWO DEPARTURE (OBSTACLE)(BLDG 2 • VISTA) OCEANSIDE, CALIFORNIA