

23166

CAMP PENDLETON MCAS (MUNN FLD) (KNFG)

# QUNTN ONE DEPARTURE (OBSTACLE) (QUNTN1•OCN)

OCEANSIDE, CALIFORNIA

ATIS ★ 285.45  
 CLNC DEL  
 134.675 271.6  
 GND CON  
 134.675 360.2  
 TOWER ★  
 128.775 340.2  
 SOCAL DEP CON  
 127.3 323.0

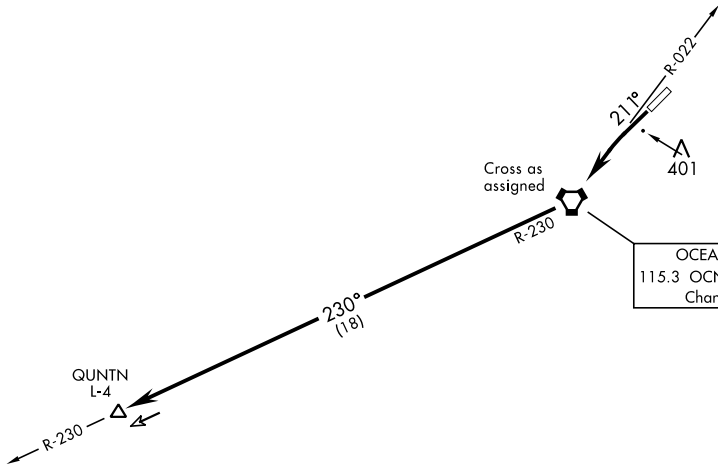
AL-5985 [USN]

Rwy	Knots	60	120	180	240	300	360
21	V/V(fpm)	482	964	1446	1928	2410	2892

Minimum Climb Rate to 900

## NOT FOR CIVIL USE

3169



SW-3, 16 MAY 2024 to 13 JUN 2024

SW-3, 16 MAY 2024 to 13 JUN 2024

W-291



### DEPARTURE ROUTE DESCRIPTION

TAKEOFF RWY 21: Climb on heading 211° to intercept OCN VORTAC R-022 to OCN. Cross OCN at assigned altitude, then direct QUNTN.

# QUNTN ONE DEPARTURE (OBSTACLE) (QUNTN1•OCN)

OCEANSIDE, CALIFORNIA

Orig 15JUN23

CAMP PENDLETON MCAS (MUNN FLD) (KNFG)