

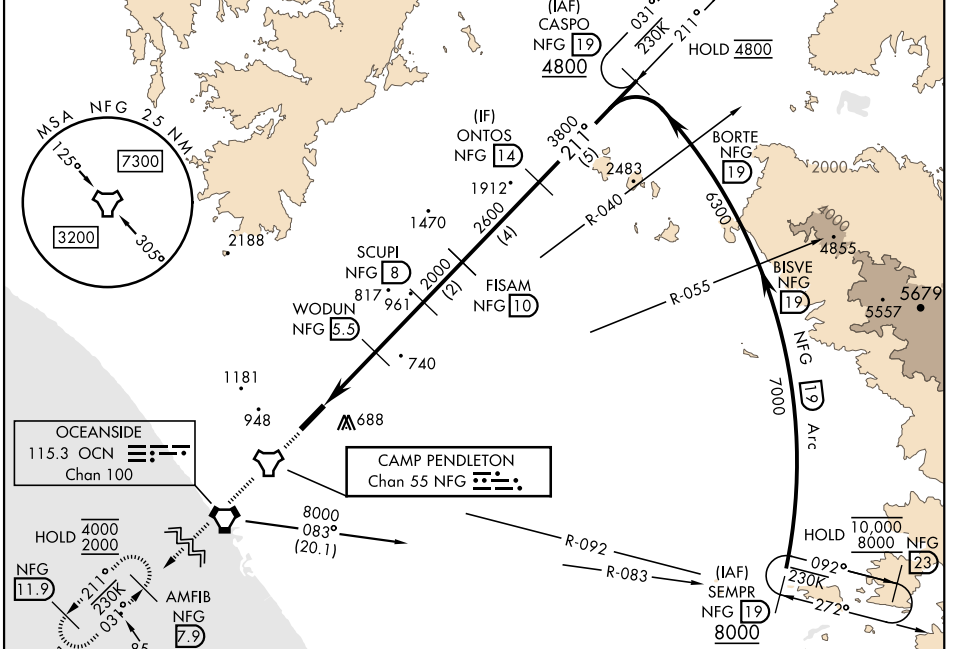
# TACAN Z RWY 21

TACAN NFG Chan <b>55</b>	APCH CRS <b>211°</b>	Rwy Idg TDZE Arpt Elev	<b>6005</b> <b>78</b> <b>78</b>	[USN]	CAMP PENDLETON MCAS (MUNN FLD) (KNFG)
▼ * When ALS inop, increase CAT A vis to 1 mile, CAT B to 1½ miles. ** Circling Rwy 3 not authorized at night when VGSI inop. Visibility Reduction by Helicopters NA.					SALSF 

ATIS ★ <b>285.45</b>	SOCAL APP CON <b>127.3 323.0</b>	TOWER ★ <b>128.775 340.2</b>	GND CON <b>134.675 360.2</b>	CLNC DEL <b>134.675 271.6</b>	ASR/PAR
-------------------------	-------------------------------------	---------------------------------	---------------------------------	----------------------------------	---------

Knots	60	120	180	240	300	360
V/V(fpm)	223	446	669	892	1115	1338

Min climb of 223 ft/NM to 1600 - Controlling Obstacle Unk



**OCEANSIDE**  
115.3 OCN  
Chan 100

**CAMP PENDLETON**  
Chan 55 NFG

ELEV	78	TDZE	78
------	----	------	----

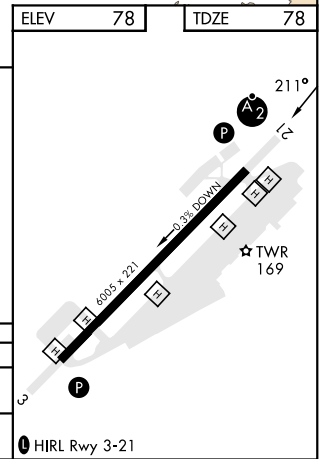
EMERG SAFE ALT 100 NM 13,600

2000 NFG, AMFIB NFG 7.9, VGSI and descent angles not coincident (VGSI Angle 3.50/TCH 53).

The diagram shows the descent profile from 2000 ft to 1080 ft. Key data points include:
 

- Distance from TACAN to ZAKES: 2.7 NM
- Distance from ZAKES to WODUN: 2.5 NM
- Distance from WODUN to SCUPI: 2.5 NM
- Distance from SCUPI to FISAM: 2.5 NM
- Distance from FISAM to ONTOS: 2.5 NM
- Descent angle: 3.35°
- TCH: 53

CATEGORY	A	B	C	D
S-21*	940-¾ 862 (900-¾)	940-1 862 (900-1)	940-2½ 862 (900-2½)	
CIRCLING**	1000-1¼ 922 (1000-1¼)	1260-1½ 1182 (1200-1½)	1500-3 1422 (1500-3)	



# TACAN Z RWY 21

SW-3, 16 MAY 2024 to 13 JUN 2024

SW-3, 16 MAY 2024 to 13 JUN 2024