

WAAS CH 99510 W10A	APP CRS 102°	Rwy Idg TDZE Apt Elev	5506 1014 1014
--	------------------------	-----------------------------	---

RNAV (GPS) RWY 10

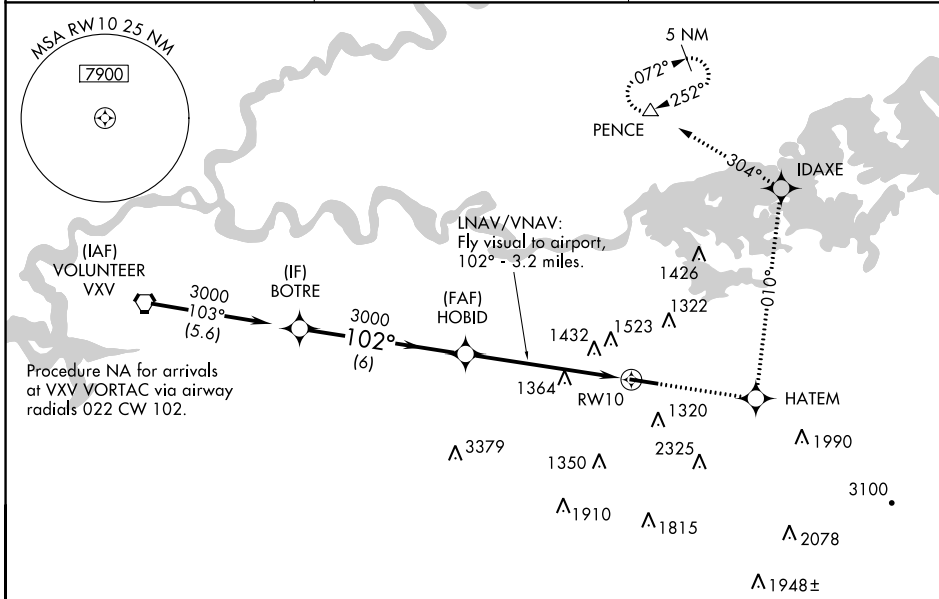
GATLINBURG-PIGEON FORGE (GKT)

RNP APCH - GPS.

▽ LNAV/VNAV NA when using Mc Ghee Tyson altimeter setting. For uncompensated Baro-VNAV systems, LNAV/VNAV NA below -17°C or above 47°C. Helicopter visibility reduction below 3/4 SM NA. When local altimeter setting not received, use Mc Ghee Tyson altimeter setting; increase LPV DA to 1425 feet, and all visibilities 1/2 SM; increase all MDAs 60 feet and Circling visibility Cat A 1/2 SM. Circling to Rwy 28 NA at night. Procedure NA at night.

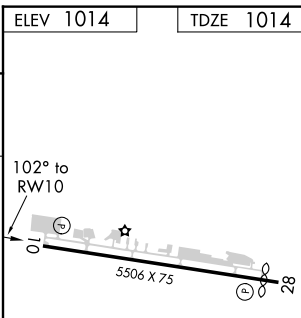
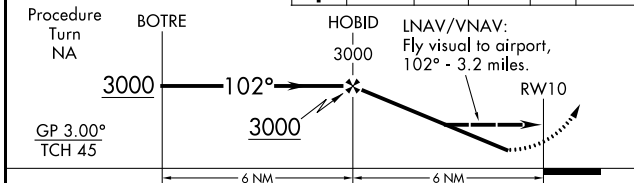
MISSED APPROACH: Climb to 4000 direct HATEM and via 010° track to IDAXE and via 304° track to PENCE and hold.

AWOS-3 126.875	KNOXVILLE APP CON 132.8 360.8	UNICOM 123.0 (CTAF) 0
--------------------------	---	---------------------------------



VGSI and RNAV glidepath not coincident (VGSI Angle 3.50/TCH 33).

ELEV 1014	TDZE 1014
-----------	-----------



CATEGORY	A	B	C	D
LPV DA	1371-1¼		357 (400-1¼)	
LNAV/ VNAV DA	2013-2	999 (1000-2)	2013-3	999 (1000-3)
LNAV MDA	1800-1 786 (800-1)	1800-1¼ 786 (800-1¼)	1800-2¼ 786 (800-2¼)	1800-2½ 786 (800-2½)
CIRCLING	1800-1 786 (800-1)	1880-1¼ 866 (900-1¼)	2040-3 1026 (1100-3)	2680-3 1666 (1700-3)

REIL Rwys 10 and 28
MIRL Rwy 10-28 0

SE-1, 16 MAY 2024 to 13 JUN 2024

SE-1, 16 MAY 2024 to 13 JUN 2024