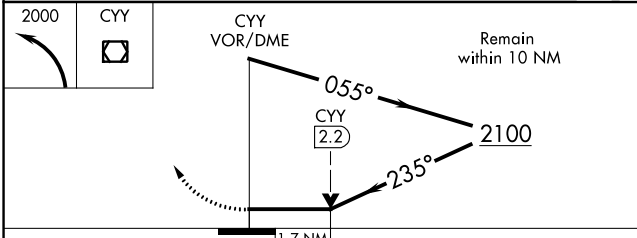
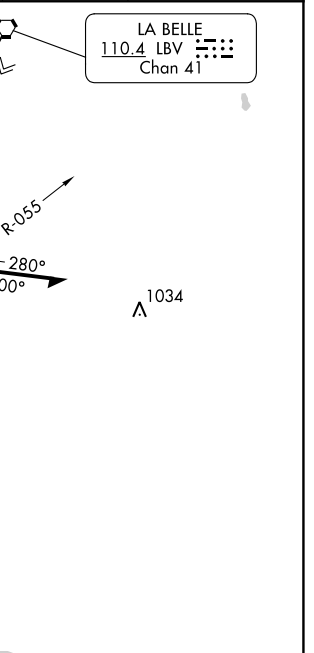
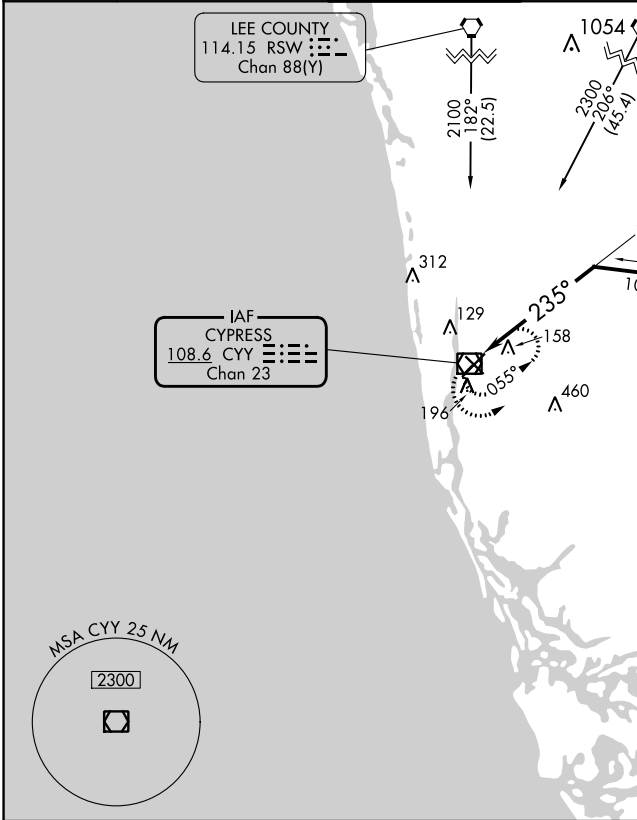


VOR/DME CY <b>108.6</b> Chan 23	APP CRS <b>235°</b>	Rwy Idg TDZE Apt Elev	<b>5000</b> <b>8</b> <b>8</b>
---------------------------------------	------------------------	-----------------------------	-------------------------------------

# VOR RWY 23

NAPLES MUNI (APF)

Helicopter visibility reduction below 3/4 SM NA.		MISSED APPROACH: Climbing left turn to 2000 in CYV VOR/DME holding pattern.		
ATIS <b>134.225</b>	FORT MYERS APP CON* <b>124.125 371.85</b>	NAPLES TOWER* <b>128.5</b> (CTAF)	GND CON <b>121.6</b>	CLNC DEL <b>118.0</b>
		CLNC DEL <b>124.125</b> (When twr closed)		



CATEGORY	A	B	C	D
S-23	600-1	592 (600-1)	600-1½ 592 (600-1½)	600-1¾ 592 (600-1¾)
CIRCLING	600-1	592 (600-1)	680-2 672 (700-2)	820-2¾ 812 (900-2¾)

ELEV 8	TDZE 8
--------	--------

MIRL Rwy 5-23 and 14-32   
REIL Rwy 5, 14, 23 and 32

SE-3, 16 MAY 2024 to 13 JUN 2024

SE-3, 16 MAY 2024 to 13 JUN 2024