

MOWGL TWO DEPARTURE (RNAV)

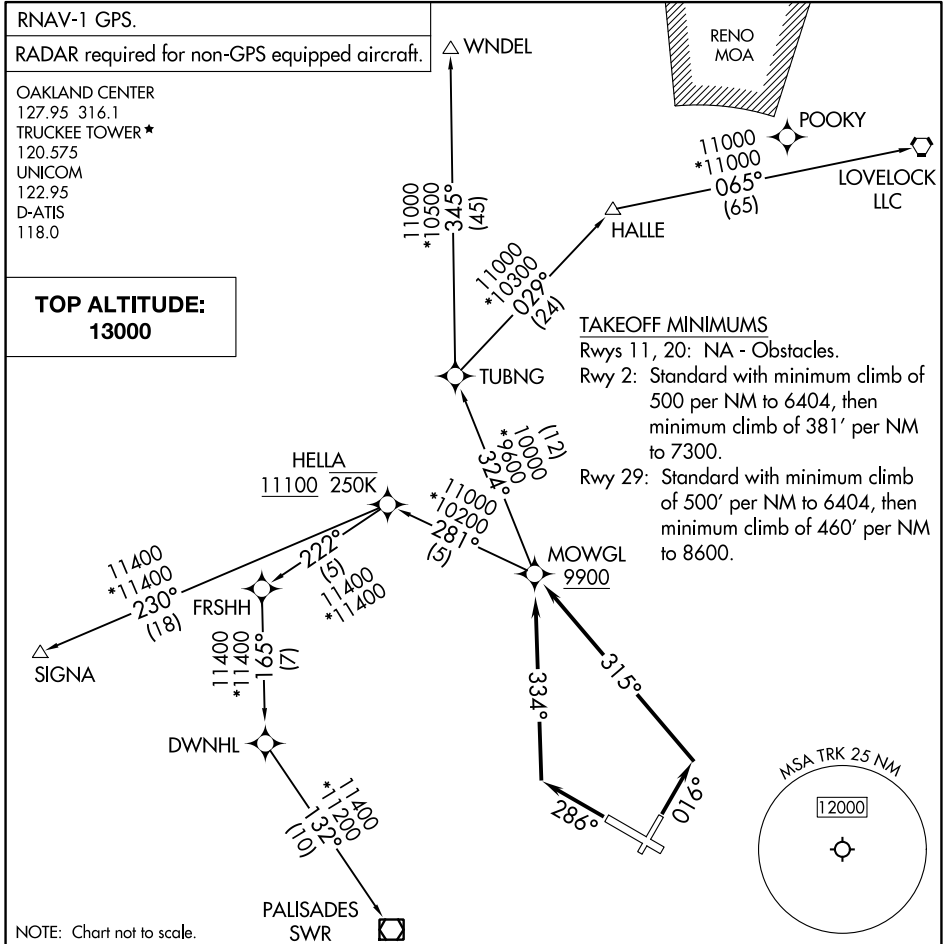
AL-6021 (FAA)

TRUCKEE-TAHOE (TRK)
TRUCKEE, CALIFORNIA

RNAV-1 GPS.
 RADAR required for non-GPS equipped aircraft.

OAKLAND CENTER
 127.95 316.1
 TRUCKEE TOWER *
 120.575
 UNICOM
 122.95
 D-ATIS
 118.0

**TOP ALTITUDE:
 13000**



SW-2, 16 MAY 2024 to 13 JUN 2024

SW-2, 16 MAY 2024 to 13 JUN 2024

NOTE: Chart not to scale.

DEPARTURE ROUTE DESCRIPTION

TAKEOFF RUNWAY 2: Climb on heading 016° to intercept course 315° to cross MOWGL at or above 9900, thence. . . .

TAKEOFF RUNWAY 29: Climb on heading 286° to intercept course 334° to cross MOWGL at or above 9900, thence. . . .

. . . .(transition) maintain 13000 expect filed altitude 10 minutes after departure.

HALLE TRANSITION (MOWGL2.HALLE)

LOVELOCK TRANSITION (MOWGL2.LLC)

PALISADES TRANSITION (MOWGL2.SWR)

SIGNA TRANSITION (MOWGL2.SIGNA)

WNDEL TRANSITION (MOWGL2.WNDEL)