

WAAS CH 83489 W35A	APP CRS 347°	Rwy Idg 4068 TDZE 1178 Apt Elev 1179
--	------------------------	---

RNAV (GPS) RWY 35

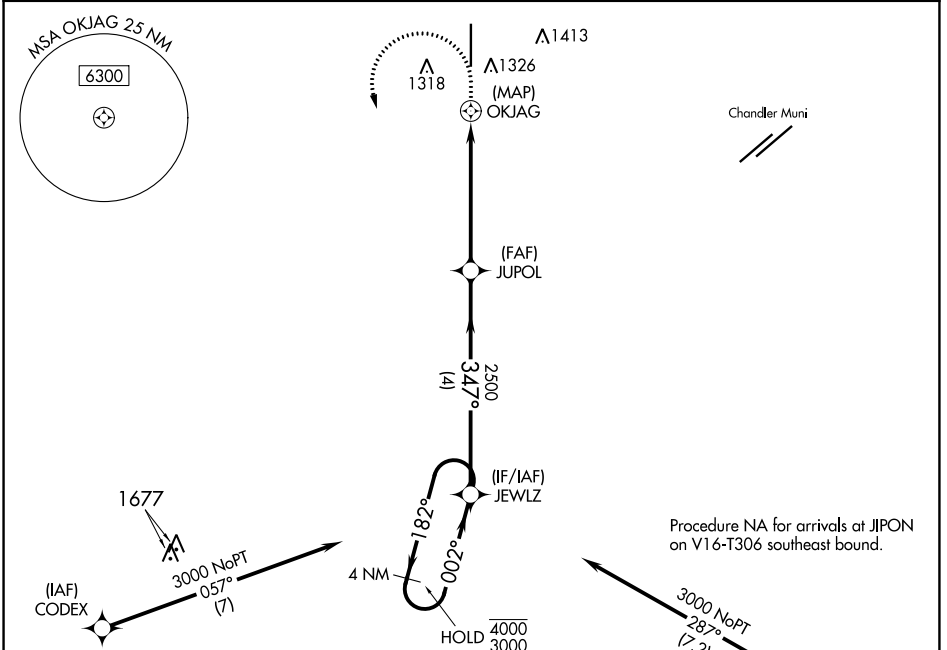
STELLAR AIRPARK (P19)

RNP APCH - GPS.

NA Use Phoenix Sky Harbor Intl altimeter setting. Rwy 35 helicopter visibility reduction below 1 SM NA. Activate MRL Rwy 17-35 and PAPI Rwy 17-35 - CTAf. RADAR required.

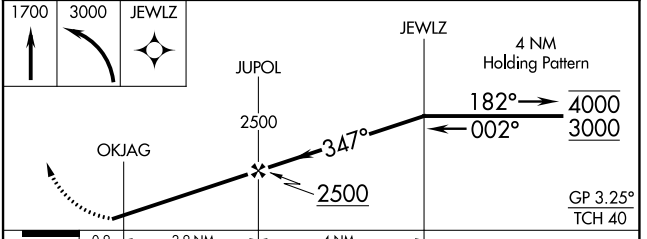
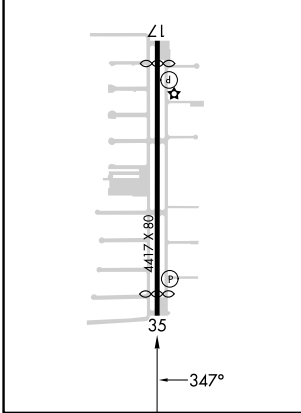
MISSED APPROACH: (Do not exceed 200K until JEWLZ) Climb to 1700 then climbing left turn to 3000 direct JEWLZ and hold.

PHX ASOS 127.575	PHOENIX APP CON 123.7 363.0	UNICOM 122.975 (CTAF) 0
----------------------------	---------------------------------------	-----------------------------------



ELEV 1179	D	TDZE 1178
-----------	----------	-----------

MRL Rwy 17-35 **0**
REIL Rwy 17 and 35 **0**



1700	3000	JEWLZ	
↑	↶	✧	
JUPOL		JEWLZ	4 NM Holding Pattern
OKJAG	2500	347°	182° → 4000
		2500	← 002° 3000
0.9	2.9 NM	4 NM	GP 3.25° TCH 40
CATEGORY	A	B	C
LPV DA	1457-1 279 (300-1)		
LNAV MDA	1620-1	442 (500-1)	1620-1 3/8 442 (500-1 3/8)
CIRCLING	1760-1	581 (600-1)	1760-1 1/2 581 (600-1 1/2)
			NA

SW-4, 16 MAY 2024 to 13 JUN 2024

SW-4, 16 MAY 2024 to 13 JUN 2024