

LOC/DME I-DJK 109.95 Chan 36 (Y)	APP CRS 022°	Rwy Idg 7026 TDZE 913 Apt Elev 913
--	------------------------	---

ILS or LOC RWY 2

DE KALB TAYLOR MUNI (DKB)

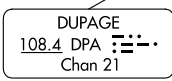
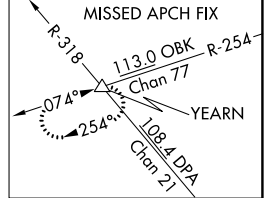
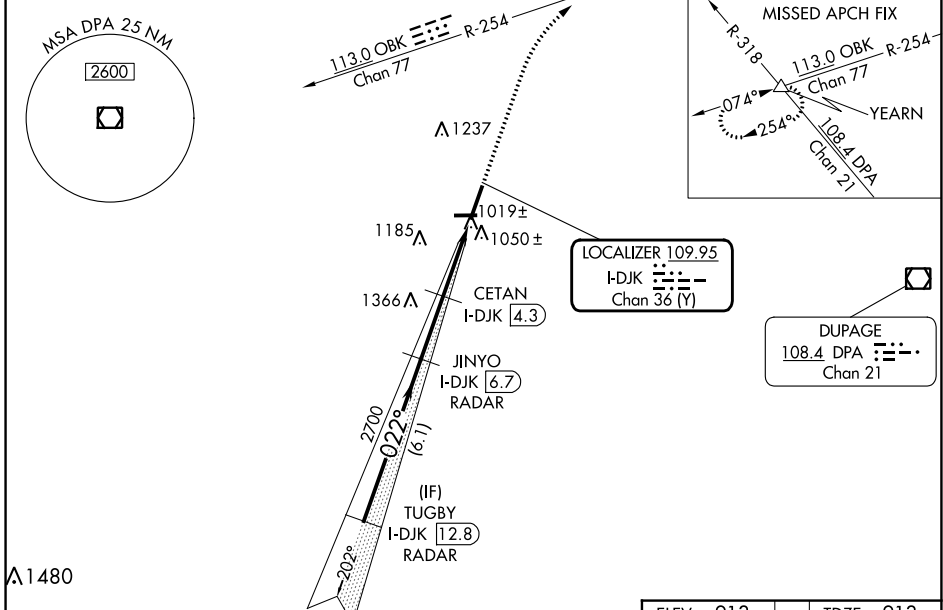
RADAR required for procedure entry. DME or RADAR required.

VDP NA with Aurora altimeter setting. When local altimeter setting not received, use Aurora altimeter setting and increase DA to 1174 feet and all MDA 80 feet; CETAN fix minimums increase Circling Cat C and D visibility 1/4 SM. For inop ALS, increase S-ILS 2 all Cats visibility to 3/8 SM. CETAN fix minimums: For inop ALS, increase S-LOC 2 Cat C and D visibility to 1 SM.



MISSED APPROACH:
Climb to 3000 on heading 022° and OBK VOR/DME R-254 to YEARN Int and hold.

AWOS-3 119.075	CHICAGO APP CON 133.5 349.0	UNICOM 122.7 (CTAF) 0
--------------------------	---------------------------------------	--

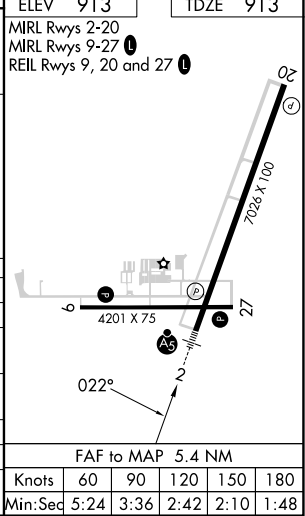


VGSI and ILS glidepath not coincident (VGSI Angle 3.00/TCH 53).

TUGBY I-DJK 12.8 RADAR	JUNYO I-DJK 6.7 RADAR	CETAN I-DJK 4.3	I-DJK 2.4	I-DJK 1.3
2700	2700	1900		
GS 3.00° TCH 55	022°	022°		
6.1 NM	2.4 NM	1.9 NM	1.1 NM	

ELEV 913	TDZE 913
MIRL Rwys 2-20	OBK R-254
MIRL Rwys 9-27	YEARN
REIL Rwys 9, 20 and 27	

CATEGORY	A	B	C	D
S-ILS 2	1113-1/2		200 (200-1/2)	
S-LOC 2	1900-3/4 987 (1000-3/4)	1900-1 987 (1000-1)	1900-2 1/2	987 (1000-2 1/2)
CIRCLING	1900-1 1/4 987 (1000-1 1/4)	1900-1 1/2 987 (1000-1 1/2)	1900-3	987 (1000-3)
CETAN FIX MINIMUMS (DME REQUIRED)				
S-LOC 2	1280-1/2 367 (400-1/2)	1500-1	1280-5/8 367 (400-5/8)	1740-2 3/4 827 (900-2 3/4)
CIRCLING	1360-1 447 (500-1)	1500-1 587 (600-1)	1600-2 687 (700-2)	1740-2 3/4 827 (900-2 3/4)



FAC TO MAP 5.4 NM	Knots	60	90	120	150	180
	Min:Seq	5:24	3:36	2:42	2:10	1:48

EC-3, 16 MAY 2024 to 13 JUN 2024

EC-3, 16 MAY 2024 to 13 JUN 2024