

WAAS CH <b>58109</b> <b>W02A</b>	APP CRS <b>021°</b>	Rwy Idg TDZE Apt Elev	<b>7026</b> <b>913</b> <b>913</b>
--	------------------------	-----------------------------	---

# RNAV (GPS) RWY 2

DE KALB TAYLOR MUNI (DKB)

▼ Baro-VNAV NA when using Aurora altimeter setting. For uncompensated Baro-VNAV systems, LNAV/VNAV NA below -16°C (4°F) or above 47°C (116°F). DME/DME RNP-0.3 NA. VDP NA when using Aurora altimeter setting. When local altimeter setting not received, use Aurora altimeter setting and increase all DA 61 feet and all MDA 80 feet; increase all LPV and LNAV/VNAV visibilities, LNAV Cats C/D visibility, and Circling Cats C/D visibility ¼ mile. For inop MALSR, increase LPV all Cats visibility to 1.

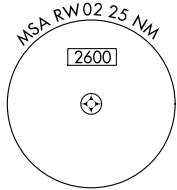
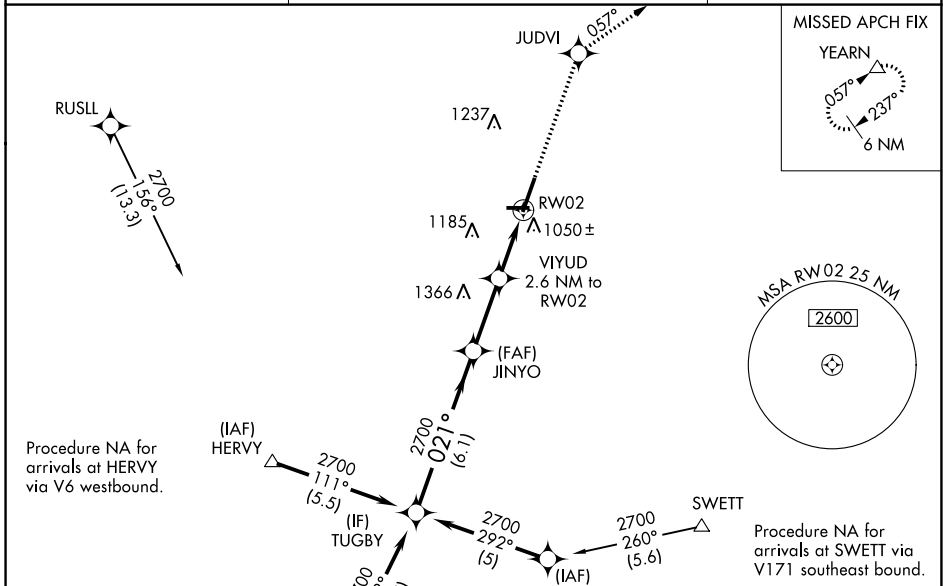
**MALSR**

**MISSED APPROACH:**  
Climb to 3000 direct JUDVI and via 057° track to YEARN and hold.

AWOS-3  
**119.075**

CHICAGO APP CON  
**133.5 349.0**

UNICOM  
**122.7 (CTAF)**



EC-3, 16 MAY 2024 to 13 JUN 2024

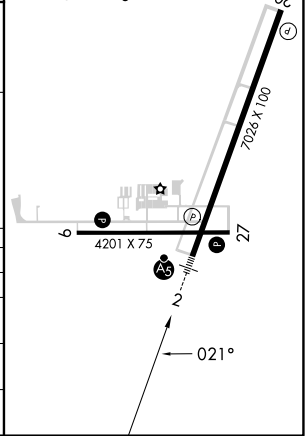
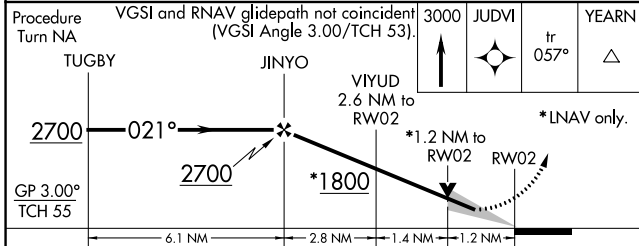
EC-3, 16 MAY 2024 to 13 JUN 2024

Procedure NA for arrivals at HERVY via V6 westbound.

Procedure NA for arrivals at KELSI via V9-128 southbound.

Procedure NA for arrivals at SWETT via V171 southeast bound.

ELEV 913	TDZE 913
REIL Rwy 9, 20 and 27	
MIRL Rwy 2-20	
MIRL Rwy 9-27	



CATEGORY	A	B	C	D
LPV DA	1207-½		294 (300-½)	
LNAV/VNAV DA	1360-1		447 (500-1)	
LNAV MDA	1360-½	447 (500-½)	1360-¾ 447 (500-¾)	1360-1 447 (500-1)
CIRCLING	1360-1 447 (500-1)	1500-1 587 (600-1)	1600-2 687 (700-2)	1740-2¾ 827 (900-2¾)