

|  |                        |                             |   |
|--|------------------------|-----------------------------|---|
| WAAS<br>CH <b>82208</b><br><b>W09A</b> | APP CRS<br><b>092°</b> | Rwy Idg<br>TDZE<br>Apt Elev | <b>4201</b><br><b>912</b><br><b>913</b> |
|--|------------------------|-----------------------------|---|

# RNAV (GPS) RWY 9

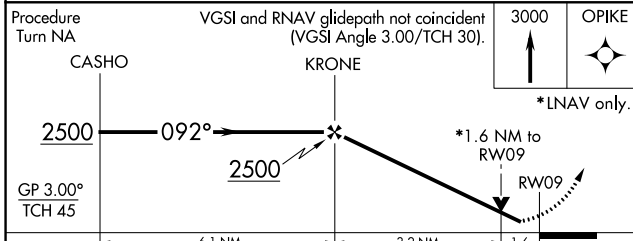
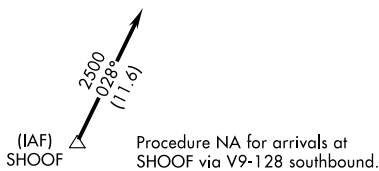
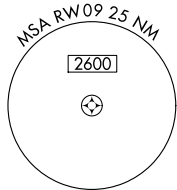
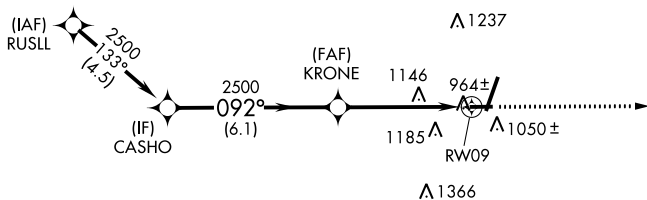
DE KALB TAYLOR MUNI (DKB)

**▼** When local altimeter setting not received, use Aurora altimeter setting and increase all DA 61 feet and all MDA 80 feet; increase all LPV and LNAV/VNAV visibilities, LNAV Cats C/D visibility, and Circling Cats C/D visibility ¼ mile. Baro-VNAV NA when using Aurora altimeter setting. VDP NA when using Aurora altimeter setting. For uncompensated Baro-VNAV systems, LNAV/VNAV NA below -16°C (4°F) or above 47°C (116°F). DME/DME RNP-0.3 NA. Visibility reduction by helicopters NA.

**▲** MISSED APPROACH: Climb to 3000 direct OPIKE and hold.

|                          |                                       |                                 |
|--------------------------|---------------------------------------|---------------------------------|
| AWOS-3<br><b>119.075</b> | CHICAGO APP CON<br><b>133.5 349.0</b> | UNICOM<br><b>122.7 (CTAF) 0</b> |
|--------------------------|---------------------------------------|---------------------------------|

Procedure NA for arrivals at RUSLL via V172 westbound.



|          |          |
|----------|----------|
| ELEV 913 | TDZE 912 |
|----------|----------|

REIL Rwy 9, 20 and 27 0  
MIRL Rwy 2-20  
MIRL Rwy 9-27 0

| CATEGORY     | A                    | B                    | C                    | D                    |
|--------------|----------------------|----------------------|----------------------|----------------------|
| LPV DA       | 1186-1 274 (300-1)   |                      |                      |                      |
| LNAV/VNAV DA | 1543-2¼ 631 (700-2¼) |                      |                      |                      |
| LNAV MDA     | 1460-1 548 (600-1)   | 1460-1½ 548 (600-1½) | 1460-1¾ 548 (600-1¾) | 1460-2 548 (600-2)   |
| CIRCLING     | 1460-1 547 (600-1)   | 1500-1 587 (600-1)   | 1600-2 687 (700-2)   | 1740-2¾ 827 (900-2¾) |

EC-3, 16 MAY 2024 to 13 JUN 2024

EC-3, 16 MAY 2024 to 13 JUN 2024