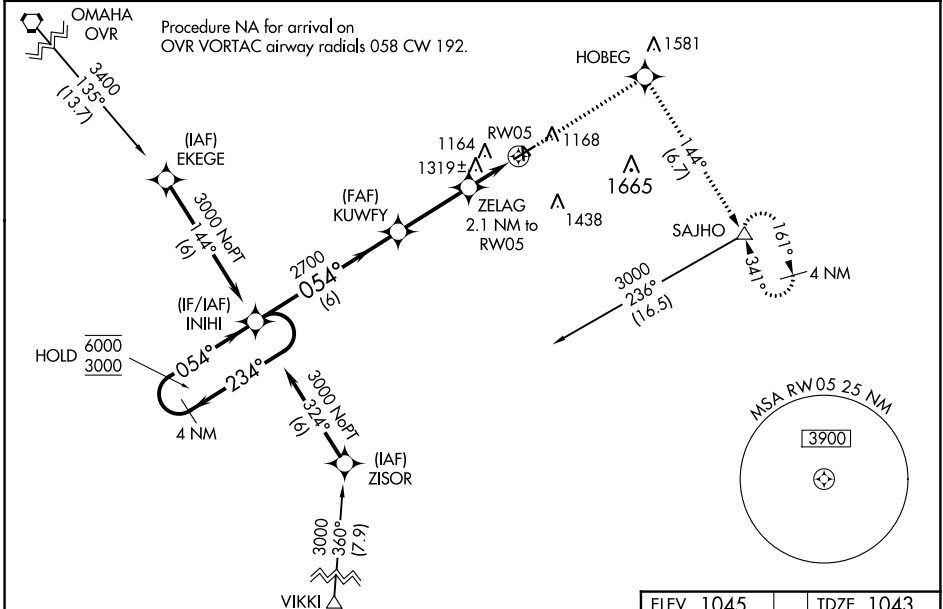


|  |                        |   |
|--|------------------------|---|
| WAAS<br>CH <b>42927</b><br><b>W05A</b> | APP CRS<br><b>054°</b> | Rwy ldg<br>TDZE <b>1043</b><br>Apt Elev <b>1045</b> |
|--|------------------------|---|

# RNAV (GPS) RWY 5

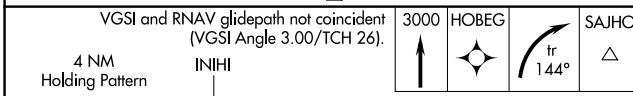
RED OAK MUNI (RDK)

|   |                                     |   |
|---|-------------------------------------|---|
| RNP APCH  |                                     | MISSED APPROACH: Climb to 3000 direct HOBEG and right turn on track 144° to SAJHO and hold. |
| <p><b>▽</b></p> <p><b>▲</b> Circling NA to Rwys 13 and 31. For uncompensated Baro-VNAV systems, LNAV/VNAV NA below -17° C or above 54° C.</p> |                                     |   |
| AWOS-3P<br><b>123.925</b>   | OMAHA APP CON<br><b>124.5 263.0</b> | UNICOM<br><b>122.8 (CTAF) 0</b>   |



NC-3, 16 MAY 2024 to 13 JUN 2024

NC-3, 16 MAY 2024 to 13 JUN 2024



|              |                       | 6 NM                  | 3 NM | 2.1 NM |
|--------------|-----------------------|-----------------------|------|--------|
| CATEGORY     | A                     | B                     | C    | D      |
| LPV DA       | 1363-1                | 320 (400-1)           |      | NA     |
| LNAV/VNAV DA | 1660-2¼               | 617 (700-2¼)          |      | NA     |
| LNAV MDA     | 1600-1                | 557 (600-1)           |      | NA     |
| CIRCLING     | 1620-1<br>575 (600-1) | 1740-1<br>695 (700-1) |      | NA     |

