

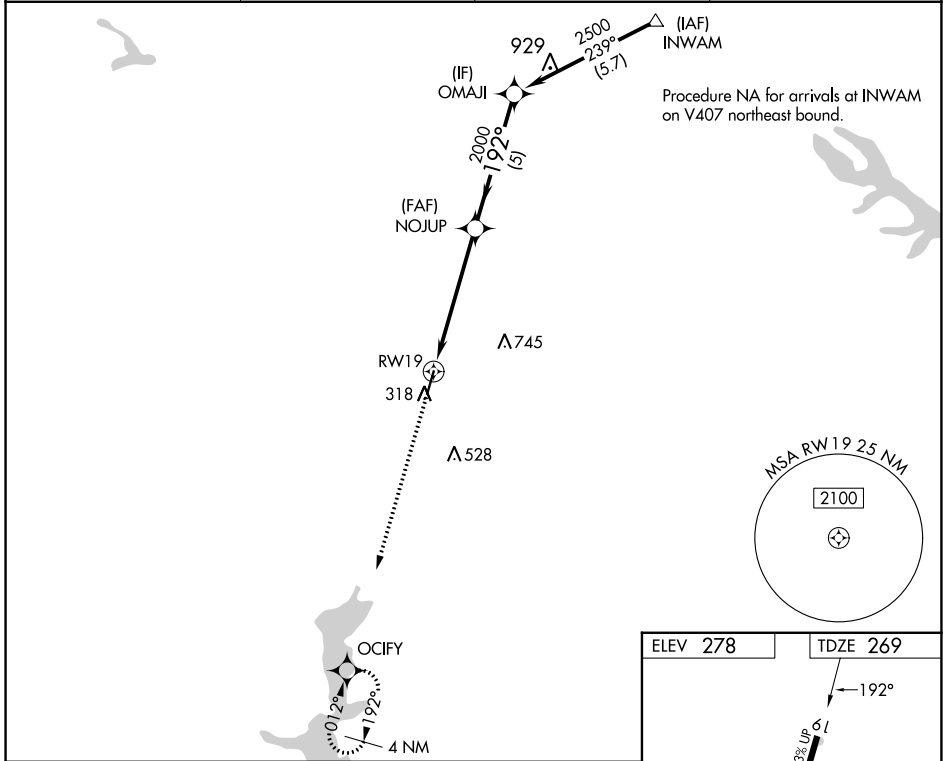
APP CRS	Rwy Idg	5004
192°	TDZE	269
	Apt Elev	278

RNAV (GPS) RWY 19

MINDEN (MNE)

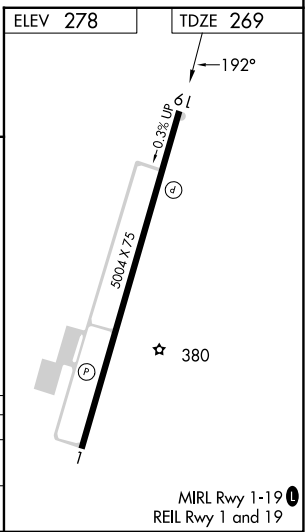
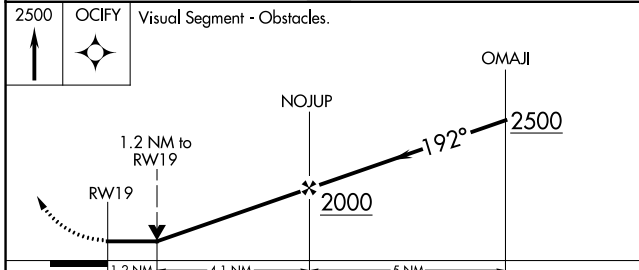
RNP APCH.	MISSED APPROACH: Climb to 2500 direct OCIFY and hold.
▽ Rwy 19 helicopter visibility reduction below 3/4 SM NA. When local altimeter setting not received, use Barksdale AFB altimeter setting; increase all MDAs 80 feet: increase visibility LNAV Cats C/D 1/2 SM and Circling Cats C/D 1/4 SM.	

AWOS-3PT 119.325	SHREVEPORT APP CON 123.75 360.725	GCO 135.075	UNICOM 122.8 (CTAF) 1
----------------------------	---	-----------------------	--



SC-4, 16 MAY 2024 to 13 JUN 2024

SC-4, 16 MAY 2024 to 13 JUN 2024



CATEGORY	A	B	C	D
LNAV MDA	820-1	551 (600-1)	820-1 1/2	551 (600-1 1/2)
CIRCLING	820-1	542 (600-1)	1060-2 1/4 782 (800-2 1/4)	1060-2 1/2 782 (800-2 1/2)

MIRL Rwy 1-19 **1**
REIL Rwy 1 and 19