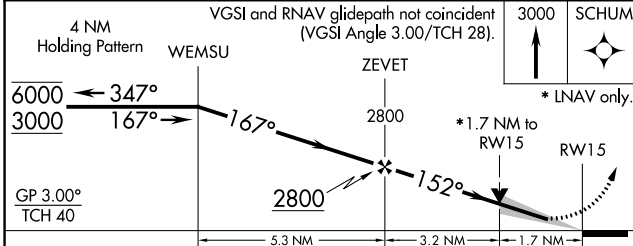
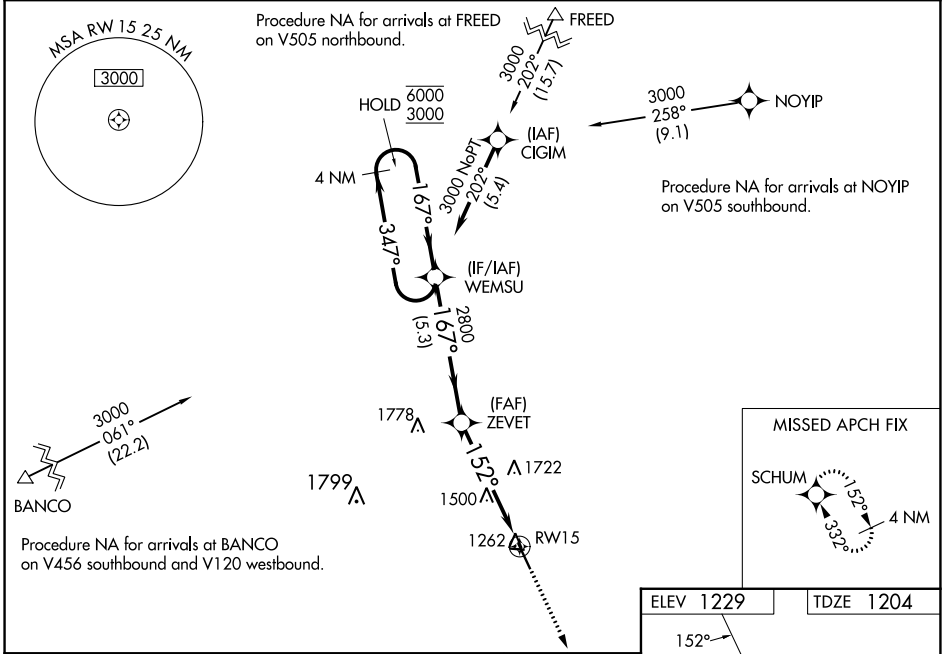


WAAS CH <b>90428</b> <b>W15A</b>	APP CRS <b>152°</b>	Rwy Idg TDZE <b>1204</b> Apt Elev <b>1229</b>
----------------------------------------	------------------------	-----------------------------------------------------

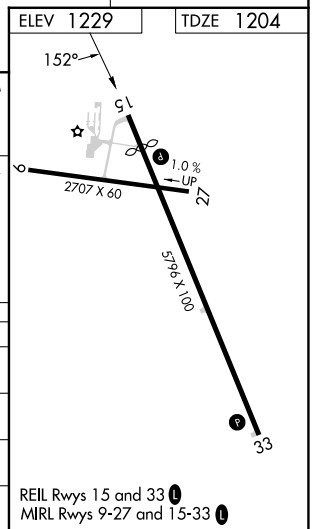
# RNAV (GPS) RWY 15

FOREST CITY MUNI (FXY)

RNP APCH.		<p>MISSED APPROACH: Climb to 3000 direct to SCHUM and hold.</p>
<p><b>⚠</b> Circling to Rwy 9, 27 and 33 NA at night. For uncompensated Baro-VNAV systems, LNAV/VNAV NA below -29°C or above 54°C. When local altimeter setting not received, use Mason City altimeter setting and increase LPV DA to 1488 feet; LNAV/VNAV DA to 1516 feet; increase all MDA 40 feet. VDP and Baro-VNAV NA when using Mason City altimeter setting.</p>		
AWOS-3 <b>123.925</b>	MINNEAPOLIS CENTER <b>127.3 257.675</b>	UNICOM <b>122.8 (CTAF) ①</b>



CATEGORY	A	B	C	D
LPV DA		1454-1	250 (300-1)	
LNAV/VNAV DA		1482-1	278 (300-1)	
LNAV MDA	1760-1	556 (600-1)	1760-1 <sup>5</sup> / <sub>8</sub>	556 (600-1 <sup>5</sup> / <sub>8</sub> )
CIRCLING	1760-1	531 (600-1)	2040-2 <sup>1</sup> / <sub>2</sub> 811 (900-2 <sup>1</sup> / <sub>2</sub> )	2040-2 <sup>3</sup> / <sub>4</sub> 811 (900-2 <sup>3</sup> / <sub>4</sub> )



NC-3, 16 MAY 2024 to 13 JUN 2024

NC-3, 16 MAY 2024 to 13 JUN 2024