

WAAS CH <b>78016</b> <b>W33A</b>	APP CRS <b>332°</b>	Rwy Idg <b>5796</b> TDZE <b>1203</b> Apt Elev <b>1229</b>
--	------------------------	---

# RNAV (GPS) RWY 33

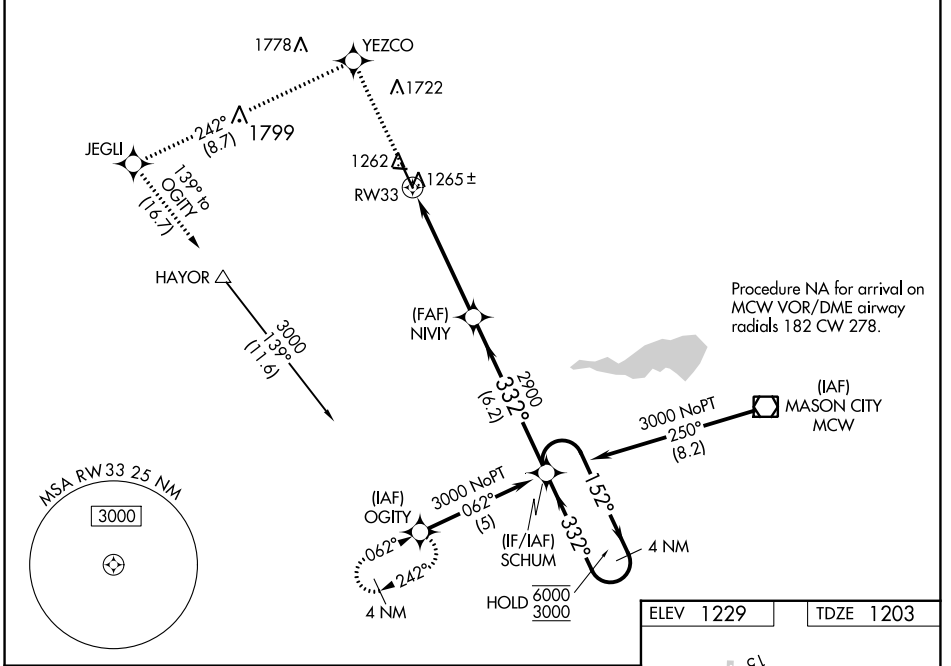
FOREST CITY MUNI (FXY)

RNP APCH - GPS.

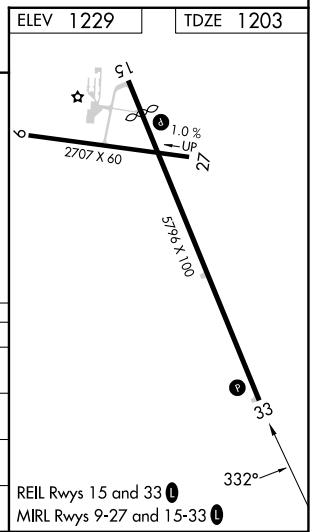
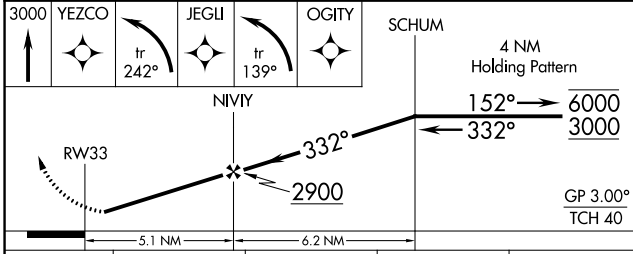
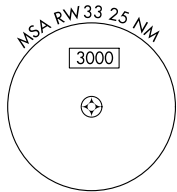
**⚠** Rwy 33 helicopter visibility reduction below 1 SM NA.  
**⚠** For uncompensated Baro-VNAV systems, LNAV/VNAV NA below -17°C or above 54°C. Straight-in Rwy 33 NA at night, Circling Rwy 9, 27, 33 NA at night.

MISSED APPROACH: Climb to 3000 direct YEZCO and left turn on track 242° to JEGLI and left turn on track 139° to OGITY and hold.

AWOS-3 <b>123.925</b>	MINNEAPOLIS CENTER <b>127.3 257.675</b>	UNICOM <b>122.8 (CTAF) 0</b>
--------------------------	--	---------------------------------



Procedure NA for arrival on MCW VOR/DME airway radials 182 CW 278.



CATEGORY	A	B	C	D
LPV DA		1453-1	250 (300-1)	
LNAV/VNAV DA		1535-1¼	332 (400-1¼)	
LNAV MDA		1520-1	317 (300-1)	
CIRCLING	1660-1 431 (500-1)	1760-1 531 (600-1)	2040-2½ 811 (900-2½)	2040-2¾ 811 (900-2¾)

NC-3, 16 MAY 2024 to 13 JUN 2024

NC-3, 16 MAY 2024 to 13 JUN 2024