

VOR/DME MCW 114.9 Chan 96	APP CRS 297°	Rwy Idg TDZE Apt Elev N/A N/A 1229
---	------------------------	--

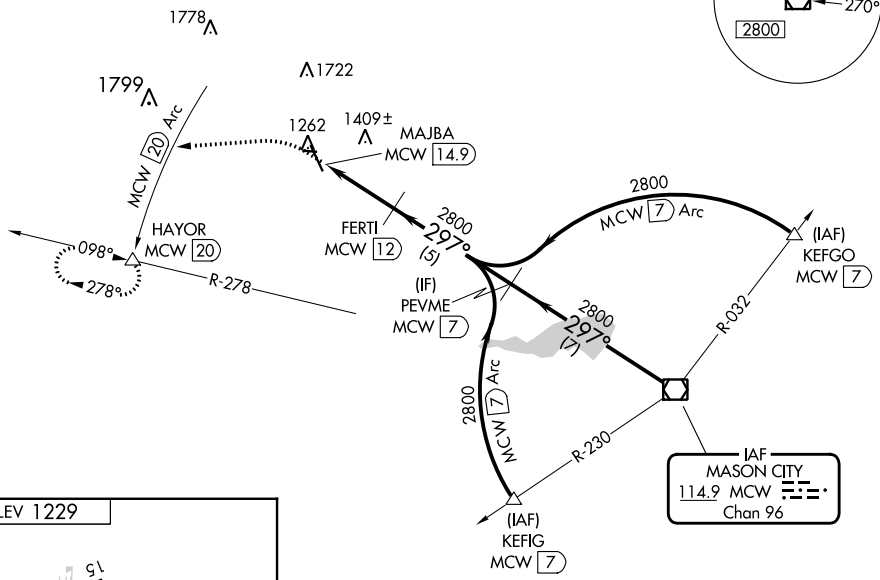
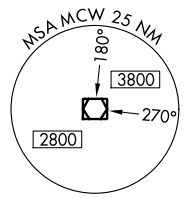
VOR-A
FOREST CITY MUNI (FXY)

DME required.

▼ When local altimeter setting not received use Mason City altimeter setting and increase all MDA 40 feet.
▲ Circling to Rwy 9, 27 33 NA at night.

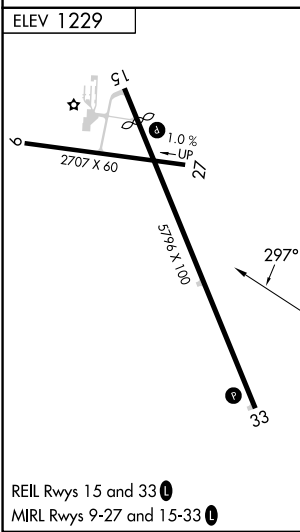
MISSED APPROACH: Climb to 3000 on heading 260° to MCW 20 DME Arc and on MCW 20 DME Arc counterclockwise to HAYOR/20 DME and hold.

AWOS-3 123.925	MINNEAPOLIS CENTER 127.3 257.675	UNICOM 122.8 (CTAF) 1
--------------------------	--	---------------------------------



NC-3, 16 MAY 2024 to 13 JUN 2024

NC-3, 16 MAY 2024 to 13 JUN 2024



Procedure NA for arrivals on MCW VOR/DME airway radials 278 CW 343.

3000 ↑ hdg 260°	MCW 20 Arc counter-clockwise	HAYOR △	FERTI MCW 12	PEVME MCW 7	MCW VOR/DME
MAJBA MCW 14.9		2800		2800	297° 2800
2.9 NM		5 NM		7 NM	
CATEGORY	A	B	C	D	
C CIRCLING	1680-1 451 (500-1)	1760-1 531 (600-1)	NA		