

WAAS CH 61332 W36A	APP CRS 004°	Rwy Idg TDZE Apt Elev	4753 614 614
--	------------------------	-----------------------------	---

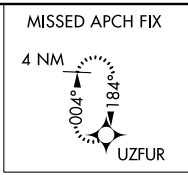
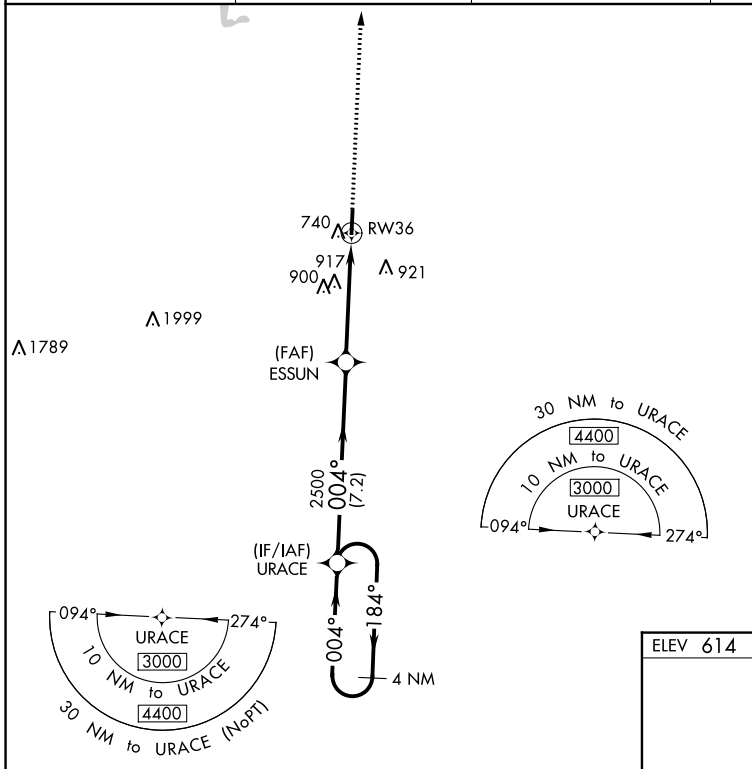
RNAV (GPS) RWY 36

MURFREESBORO MUNI (MBT)

▼ For uncompensated Baro-VNAV systems, procedure NA below -16° C (4°F) or above 54° C (130°F). Rwy 36 helicopter visibility reduction below ¼ SM NA. DME/DME RNP-0.3 NA.

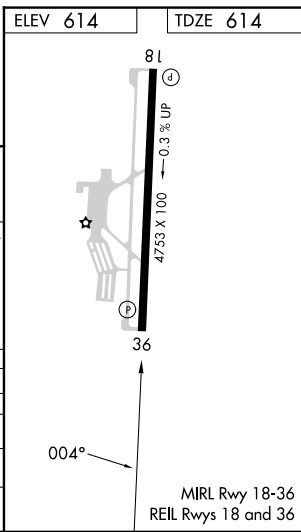
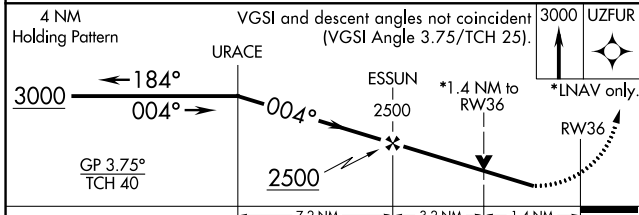
MISSED APPROACH:
Climb to 3000 direct UZFUR and hold.

AWOS-3 133.975	NASHVILLE APP CON 118.4 360.7	GCO 135.075	UNICOM 123.075 (CTAF)
--------------------------	---	-----------------------	---------------------------------



SE-1, 16 MAY 2024 to 13 JUN 2024

SE-1, 16 MAY 2024 to 13 JUN 2024



CATEGORY	A	B	C	D
LPV DA	914-7/8	300 (300-7/8)		NA
LNAV/VNAV DA	1030-1/8	416 (500-1/8)		NA
LNAV MDA	1180-1	566 (600-1)	1180-15/8 566 (600-15/8)	NA
C CIRCLING	1180-1	566 (600-1)	1280-13/4 666 (700-13/4)	NA

MIRL Rwy 18-36
REIL Rwy 18 and 36