

WAAS CH 93901 W36A	APP CRS 001°	Rwy Idg TDZE 296 Apt Elev 298	6502
--	------------------------	---	-------------

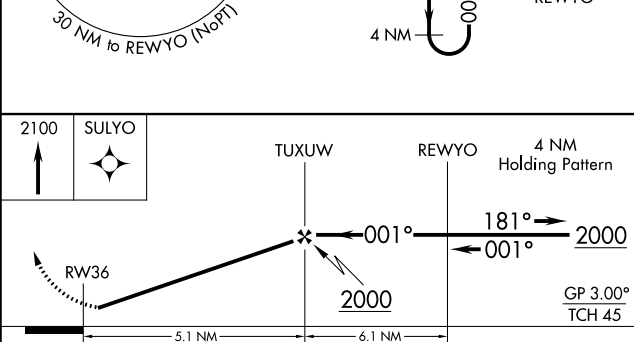
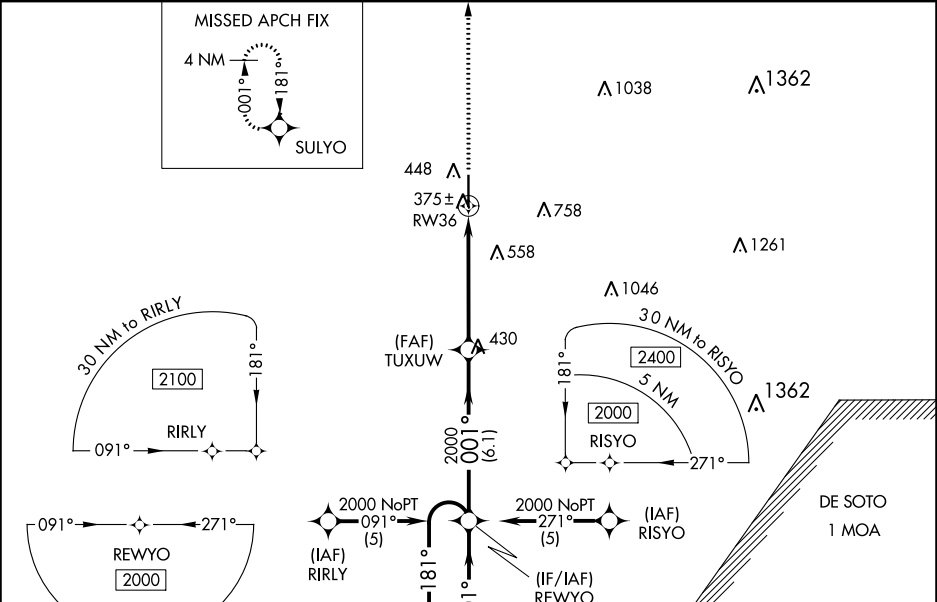
RNAV (GPS) RWY 36

HATTIESBURG/LAUREL RGNL (PIB)

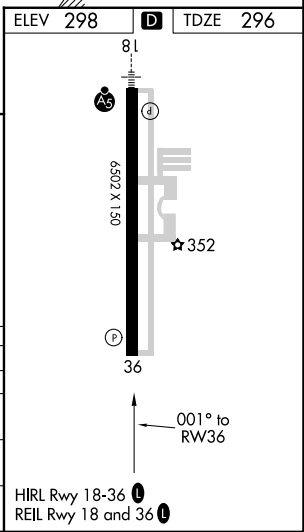
⚠ For uncompensated Baro-VNAV systems, LNAV/VNAV NA below -1.5°C (5°F) or above 48°C (118°F). DME/DME RNP-0.3 NA. Visibility reduction by helicopters NA. When local altimeter setting not received, use Hattiesburg Bobby L Chain Muni altimeter setting: increase LPV DA to 597 feet and LNAV/VNAV DA to 676; increase all MDA 60 feet and visibility LNAV Cat C/D and Circling Cat C/D ¼ SM. Baro-VNAV NA when using Hattiesburg Bobby L Chain Muni altimeter setting.

MISSED APPROACH:
Climb to 2100 direct SULYO and hold.

AWOS-3PT 128.325	HOUSTON CENTER 126.8 327.8	UNICOM 123.0 (CTAF) 0
----------------------------	--------------------------------------	---------------------------------



2100	SULYO	TUXUW	REWYO	4 NM Holding Pattern
↑	✧	✧	✧	✧
RW36		← 001° ← 001° ← 001°	→ 181° → 2000	GP 3.00° TCH 45
CATEGORY	A	B	C	D
LPV DA	546-1		250 (300-1)	
LNAV/VNAV DA	625-1¼		329 (400-1¼)	
LNAV MDA	680-1		384 (400-1)	
			680-1¼ 384 (400-1¼)	
CIRCLING	760-1 462 (500-1)		1120-2½ 822 (900-2½)	
			1120-2¾ 822 (900-2¾)	



SC-4, 16 MAY 2024 to 13 JUN 2024

SC-4, 16 MAY 2024 to 13 JUN 2024