

| | | |
|-------------|----------|-------------|
| APP CRS | Rwy Idg | 4000 |
| 043° | TDZE | 429 |
| | Apt Elev | 429 |

RNAV (GPS) RWY 4

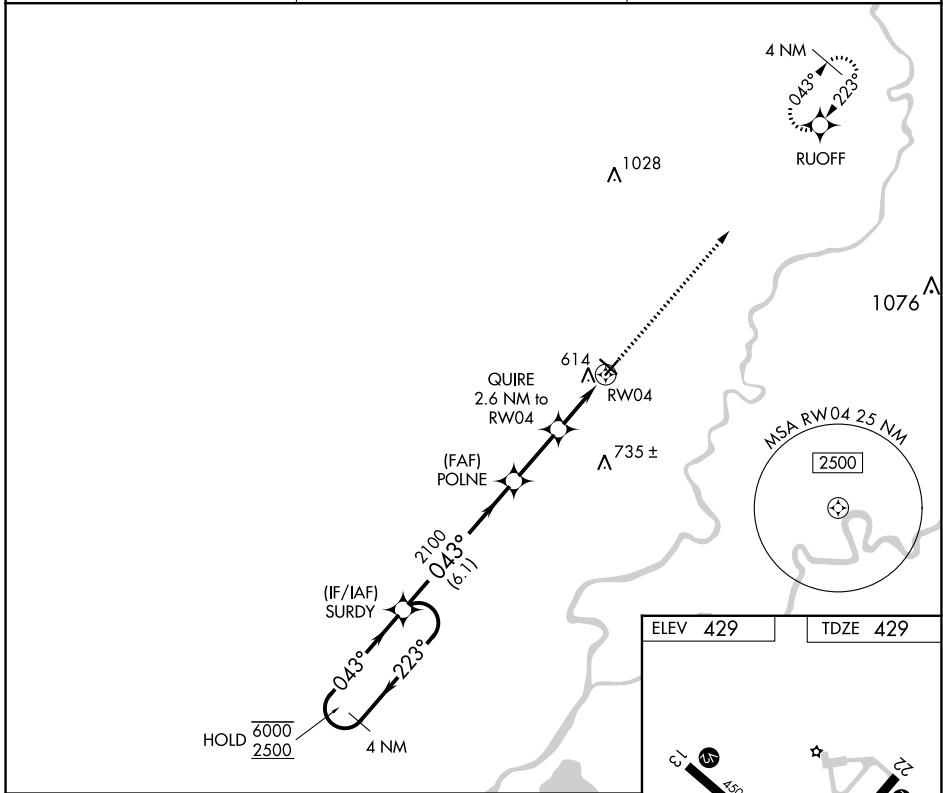
MOUNT CARMEL MUNI (AJG)

RNP APCH.

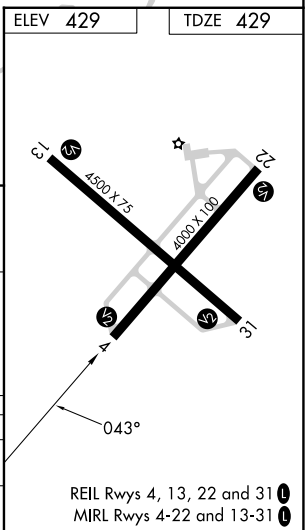
▼ Rwy 4 helicopter visibility reduction below 3/4 SM NA.
For uncompensated Baro-VNAV systems, LNAV/VNAV NA below -15°C or above 54°C.

MISSED APPROACH: Climb to 2500 direct RUOFF and hold.

| | | |
|------------------------|---|-------------------------------|
| AWOS-3 134.9 | EVANSVILLE APP CON★ 125.6 343.7 | UNICOM 122.7 (CTAF) |
|------------------------|---|-------------------------------|



| | | | | | | |
|----------------------|------------|-------------|-----------------|--|------------|-------|
| 4 NM Holding Pattern | SURDY | | | VGSI and RNAV glidepath not coincident (VGSI Angle 3.00/TCH 23). | 2500 | RUOFF |
| 6000 ← 223° | ← 043° → | 043° | POLNE | QUIRE 2.6 NM to RW04 | *LNAV only | |
| 2500 | | 2100 | | | | |
| GP 3.00° | | | | *1.5 NM to RW04 | | |
| TCH 40 | | | | | | |
| | ← 6.1 NM → | ← 2.5 NM → | ← 1.1 NM → | ← 1.5 NM → | | |
| CATEGORY | A | B | C | D | | |
| LNAV/VNAV | DA | 937-1 3/4 | 508 (600-1 3/4) | NA | | |
| LNAV MDA | 920-1 | 491 (500-1) | 920-1 1/4 | 491 (500-1 3/4) | NA | |



EC-3, 16 MAY 2024 to 13 JUN 2024

EC-3, 16 MAY 2024 to 13 JUN 2024