

WAAS CH 62834 W09A	APP CRS 092°	Rwy Idg TDZE Apt Elev	5000 856 861
--	------------------------	-----------------------------	---

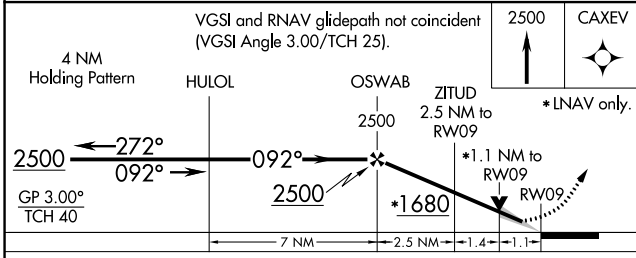
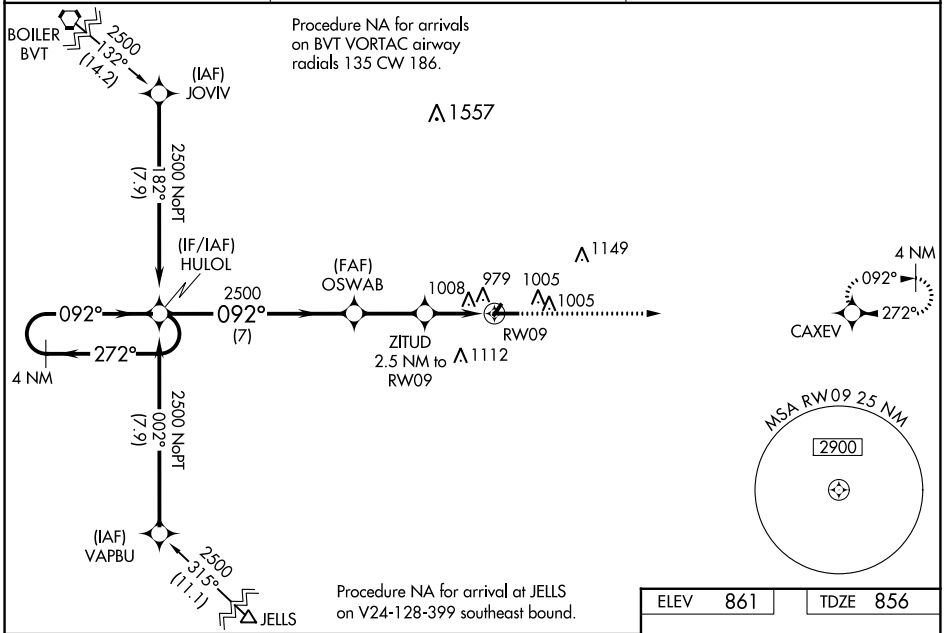
RNAV (GPS) RWY 9

FRANKFORT CLINTON COUNTY RGNL (F'KR)

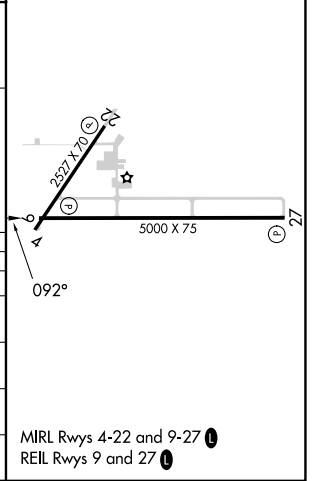
Baro-VNAV NA when using Indianapolis Exec altimeter setting. For uncompensated Baro-VNAV systems, LNAV/VNAV NA below -16°C (4°F) or above 54°C (130°F). DME/DME RNP-0.3 NA. VDP NA with Indianapolis Exec altimeter setting. When local altimeter setting not received, use Indianapolis Exec altimeter setting; increase LPV DA to 1162 feet and visibility 1/8 SM all Cats; increase LNAV/VNAV DA to 1245 feet and visibility 1/8 SM all Cats; increase all MDAs 60 feet and LNAV and Circling Cats C/D visibilities 1/4 SM.

MISSED APPROACH:
Climb to 2500 direct CAXEV and hold.

AWOS-3 124.325	GRISSOM APP CON * 123.85 291.675	UNICOM 123.0 (CTAF) 0
--------------------------	--	---------------------------------



ELEV 861	TDZE 856
----------	----------



CATEGORY	A	B	C	D
LPV DA		1106-7/8	250 (300-7/8)	
LNAV/VNAV DA		1189-1	333 (400-1)	
LNAV MDA	1260-1	404 (400-1)	1260-1 1/8	404 (400-1 1/8)
C CIRCLING	1460-1	599 (600-1)	1520-1 3/4 659 (700-1 3/4)	1520-2 659 (700-2)

EC-2, 16 MAY 2024 to 13 JUN 2024

EC-2, 16 MAY 2024 to 13 JUN 2024