

WAAS CH <b>77639</b> <b>W31A</b>	APP CRS <b>320°</b>	Rwy Idg TDZE <b>5289</b> Apt Elev <b>5320</b>
--	------------------------	---

# RNAV (GPS) X RWY 31

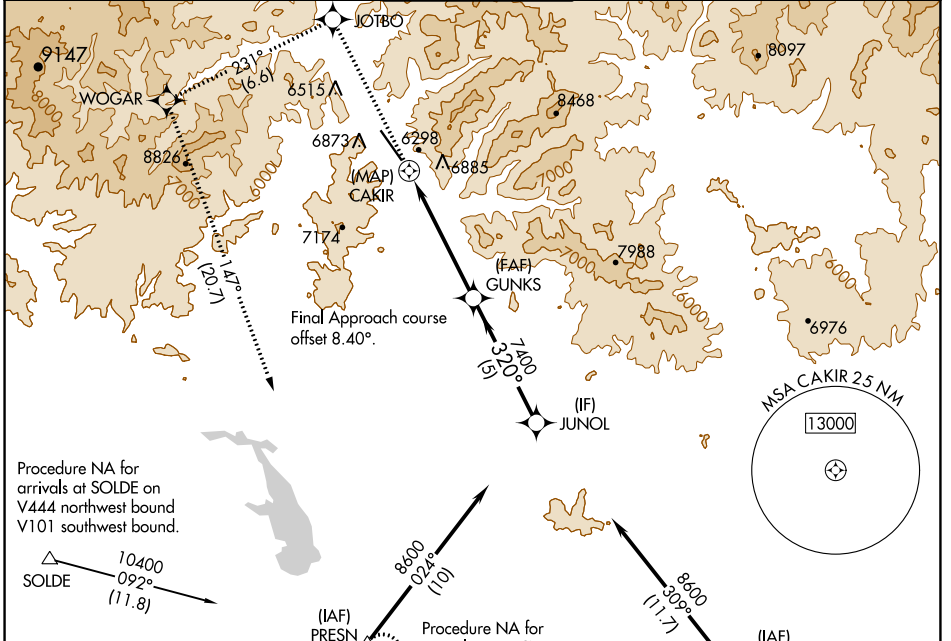
FRIEDMAN MEML (SUN)

**⚠** MISSED APPROACH: (Do not exceed 185 KIAS until WOGAR) Climb to 10500 direct JOTBO and on track 231° to WOGAR and on track 147° to PRESN and hold. \*Missed approach requires minimum climb of 420 feet per NM to 9500; if unable to meet climb gradient, see RNAV (GPS) Y RWY 31.

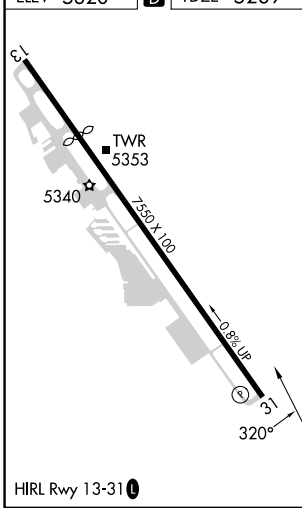
**⚠** DME/DME RNP-0.3 NA. Rwy 31 helicopter visibility reduction below 1 SM NA.

**⚠** -14°C

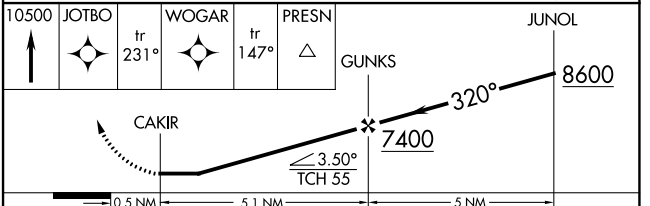
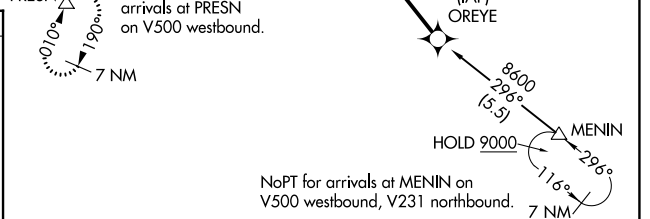
ATIS <b>128.225</b>	SALT LAKE CENTER <b>118.05 363.0</b>	HAILEY TOWER * <b>125.6 (CTAF) 0</b>	GND CON <b>121.7</b>	UNICOM <b>122.95</b>
------------------------	---	---	-------------------------	-------------------------



ELEV 5320 **D** TDZE 5289



HAILEY, IDAHO  
Orig 21JUL16



10500	JOTBO	tr 231°	WOGAR	tr 147°	PRESN	GUNKS	JUNOL
						7400	8600
			CAKIR			≤ 3.50° TCH 55	
		0.5 NM		5.1 NM			5 NM
CATEGORY	A		B		C		D
LP MDA*	6180-1¼		891 (900-1¼)		6180-2½		891 (900-2½)
LNVA MDA*	6920-1¼ 1631 (1600-1¼)		6920-1½ 1631 (1600-1½)		6920-3		1631 (1600-3)

# RNAV (GPS) X RWY 31

NW-1, 16 MAY 2024 to 13 JUN 2024

NW-1, 16 MAY 2024 to 13 JUN 2024