

WAAS CH <b>82199</b> <b>W23A</b>	APP CRS <b>233°</b>	Rwy Idg TDZE Apt Elev	<b>6007</b> <b>700</b> <b>700</b>
--	------------------------	-----------------------------	---

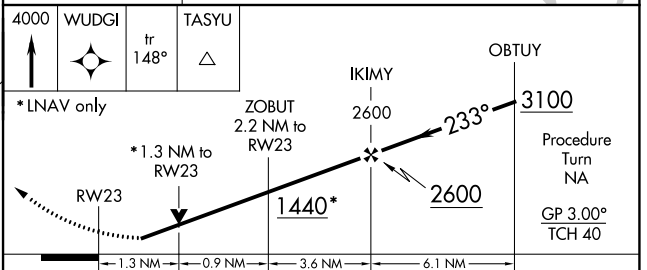
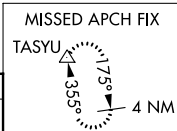
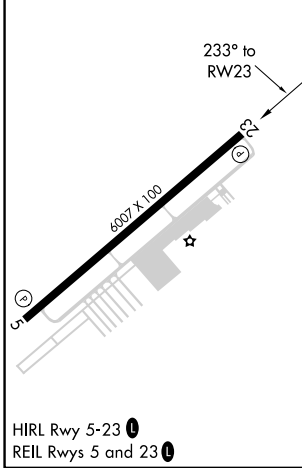
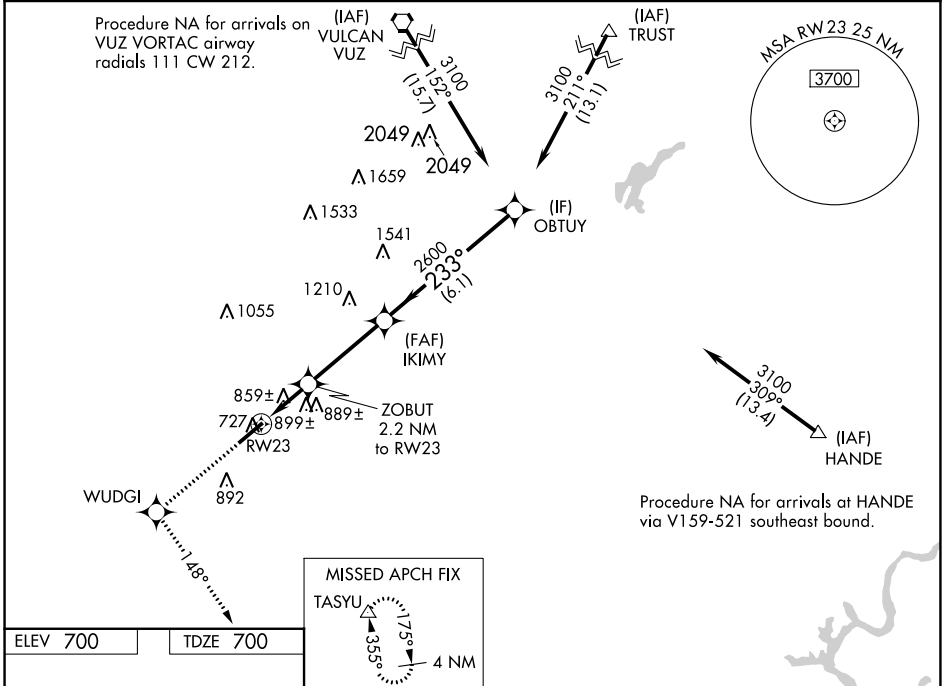
# RNAV (GPS) RWY 23

BESSEMER (BKY)

**⚠ NA** For uncompensated Baro-VNAV systems, LNAV/VNAV NA below -16°C (4°F) or above 54°C (130°F). DME/DME RNP-0.3 NA. Helicopter visibility reduction below ¼ SM NA. When local altimeter setting not received, use Alabaster altimeter setting and increase LPV DA to 1013 feet, LNAV/VNAV DA to 1211 feet, and all MDAs 60 feet; increase Circling Cat D visibility ¼ SM. Baro-VNAV and VDP NA when using Alabaster altimeter setting.

**MISSED APPROACH:** Climb to 4000 direct WUDGI and on track 148° to TASYU and hold, continue climb-in-hold to 4000.

AWOS-3PT <b>118.825</b>	BIRMINGHAM APP CON <b>124.9 351.85</b>	CLNC DEL <b>123.75</b>	UNICOM <b>123.0 (CTAF)</b>
----------------------------	---	---------------------------	-------------------------------



CATEGORY	A	B	C	D
LPV DA	972-1 272 (300-1)			
LNAV/DA VNAV	1170-1¾ 470 (500-1¾)			
LNAV MDA	1160-1 460 (500-1)	1160-1⅜ 460 (500-1⅜)	1160-1½ 460 (500-1½)	1160-1½ 460 (500-1½)
CIRCLING	1200-1 500 (500-1)	1220-1½ 520 (600-1½)	1320-2 620 (700-2)	

SE-4, 16 MAY 2024 to 13 JUN 2024

SE-4, 16 MAY 2024 to 13 JUN 2024