

WAAS CH <b>90424</b> <b>W22A</b>	APP CRS <b>220°</b>	Rwy Idg <b>4401</b> TDZE <b>35</b> Apt Elev <b>35</b>
--	------------------------	---

# RNAV (GPS) RWY 22

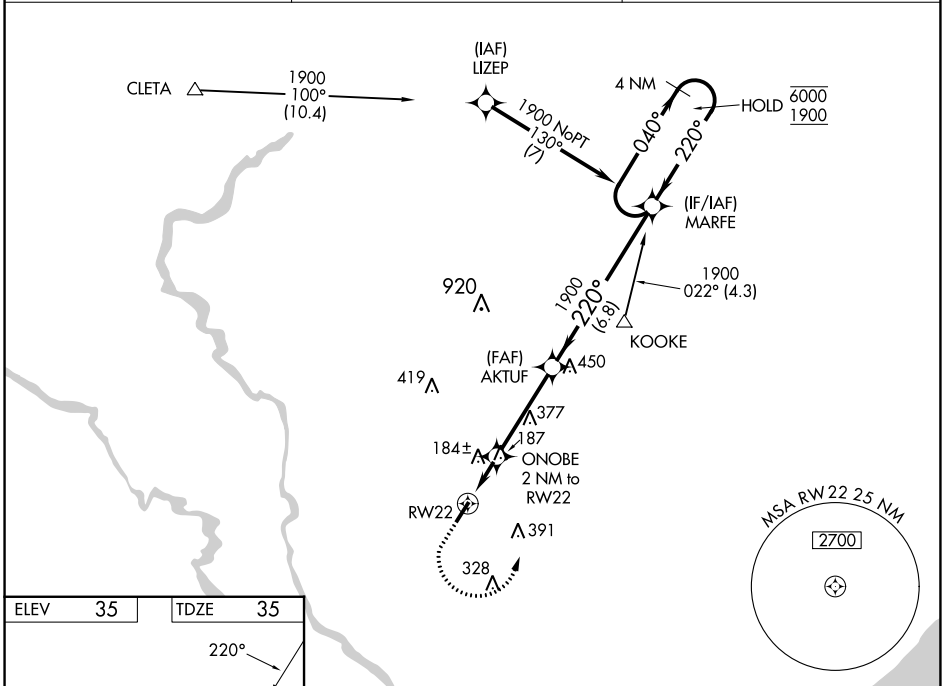
CONWAY-HORRY COUNTY (HYW)

RNP APCH.

**⚠** Rwy 22 helicopter visibility reduction below 1 SM NA. Straight-in Rwy 22 at night, operational VGSI required, remain on or above VGSI glidepath until threshold. For uncompensated Baro-VNAV systems, LNAV/VNAV NA below -15°C or above 54°C.

MISSED APPROACH: Climb to 500 then climbing left turn to 1900 direct MARFE and hold.

AWOS-3 <b>119.525</b>	MYRTLE BEACH APP CON★ <b>127.4 257.95</b>	UNICOM <b>122.7 (CTAF)</b>
--------------------------	--	-------------------------------



ELEV 35	TDZE 35	500 1900 MARFE		VGSI and RNAV glidepath not coincident (VGSI Angle 3.00°/TCH 43).	4 NM Holding Pattern
*LNAV only.		ONOBE 2 NM to RW22	1900	AKTUF	MARFE
RW22		700*	1900	220°	040° → 6000 ← 220° 1900
2 NM		3.7 NM	6.8 NM		GP 3.00° TCH 40
CATEGORY	A	B	C	D	
LPV DA	285-1		250 (300-1)		
LNAV/VNAV DA	438-1½		403 (500-1½)		
LNAV MDA	440-1	405 (500-1)		440-1½	405 (500-1½)
CIRCLING	520-1	540-1	700-1¾	700-2	
	485 (500-1)	505 (600-1)	665 (700-1¾)	665 (700-2)	

SE-2, 16 MAY 2024 to 13 JUN 2024

SE-2, 16 MAY 2024 to 13 JUN 2024