

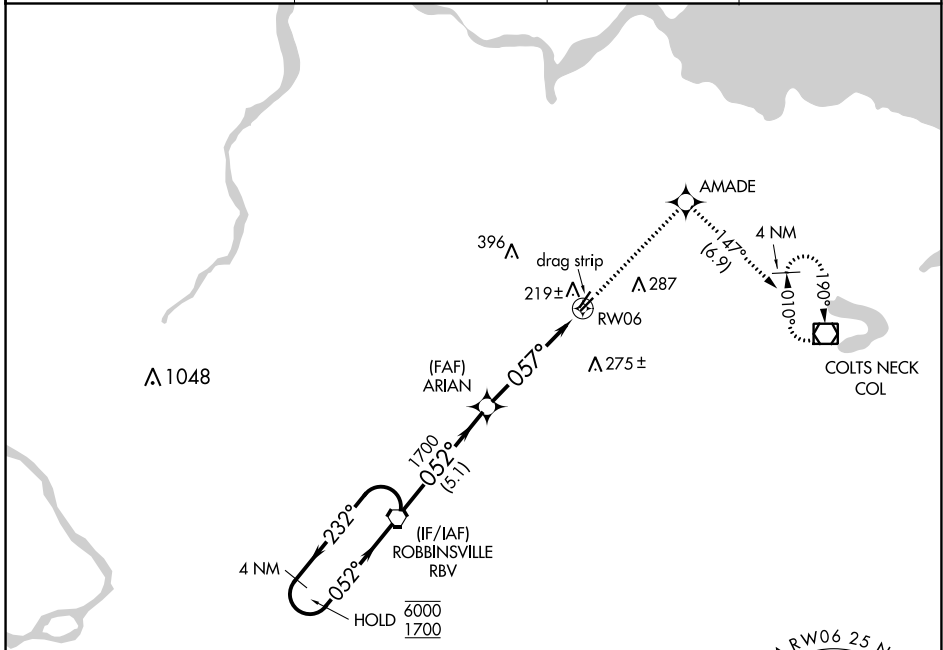
| | | |
|-------------|----------|-------------|
| APP CRS | Rwy Idg | 2994 |
| 057° | TDZE | 87 |
| | Apt Elev | 87 |

RNAV (GPS) RWY 6

OLD BRIDGE (3N6)

| | | |
|--|---|--|
| RNP APCH. | Procedure NA at night. Rwy 6 helicopter visibility reduction below 1 SM NA. Use Belmar/Farmingdale altimeter setting; when not received, use Wrightstown altimeter setting and increase all MDA 20 feet. | MISSED APPROACH: Climb to 2000 direct AMADE and on track 147° to COL VOR/DME and hold. |
| Procedure NA at night. Use Belmar/Farmingdale altimeter setting; when not received, use Wrightstown altimeter setting and increase all MDA 20 feet. | | |

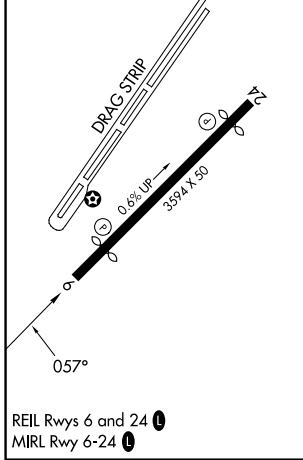
| | | | |
|--------------------------------|--|-----------------------|---------------------------------|
| BLM AWOS-3PT 121.625 | MC GUIRE APP CON 126.475 363.8 | GCO 121.725 | UNICOM 123.075 (CTAF) |
|--------------------------------|--|-----------------------|---------------------------------|



NE-2, 16 MAY 2024 to 13 JUN 2024

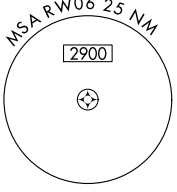
NE-2, 16 MAY 2024 to 13 JUN 2024

| | |
|----------------|----------------|
| ELEV 87 | TDZE 87 |
|----------------|----------------|



REIL Rwy 6 and 24
MIRL Rwy 6-24

NoPT for arrival on RBV VORTAC airway radials 238 CW 289.



| | | | |
|-----------------------------|------------|-------------|----------|
| Visual Segment - Obstacles. | | | |
| 2000 | AMADE | tr 147° | COL |
| 4 NM Holding Pattern | RBV VORTAC | ARIAN | RWY06 |
| 6000 1700 | ← 232° → | 052° → | ← 057° → |
| 5.1 NM | | 4.9 NM | |
| CATEGORY | A | B | C D |
| LNAV MDA | 660-1 | 573 (600-1) | NA |