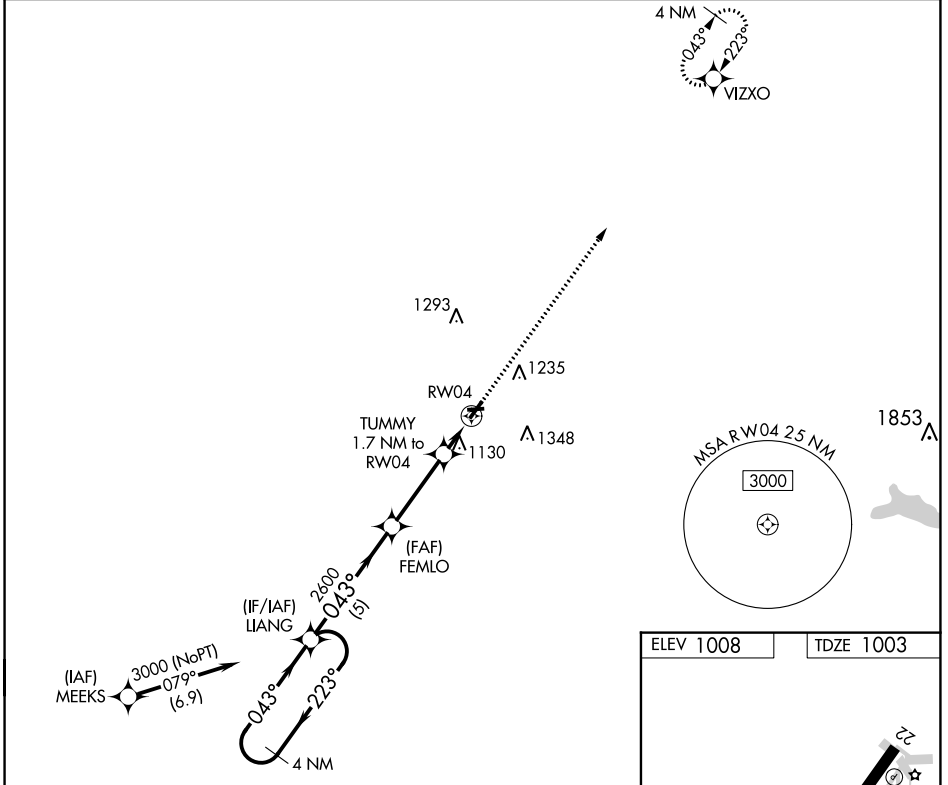


APP CRS	Rwy Idg	<b>3619</b>
<b>043°</b>	TDZE	<b>1003</b>
	Apt Elev	<b>1008</b>

# RNAV (GPS) RWY 4

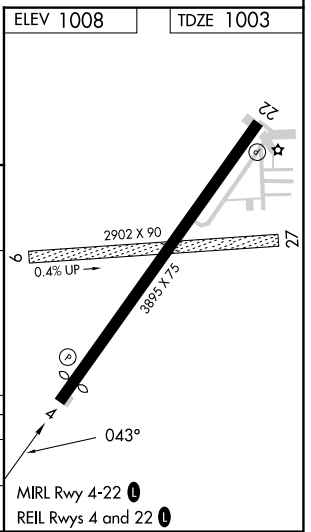
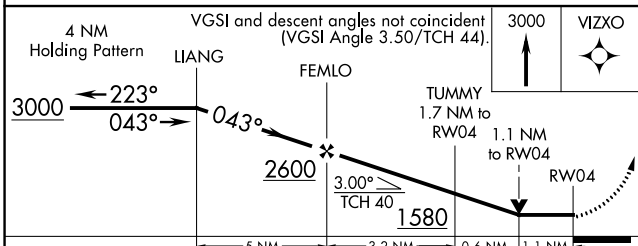
PORT BUCYRUS/CRAWFORD COUNTY (17G)

RNP APCH - GPS.		UNICOM <b>122.8 (CTAF) 0</b>
<p><b>▼</b> Circling NA to Rwys 9 and 27. Circling Rwy 22 NA at night. Rwy 4 helicopter visibility reduction below 3/4 SM NA. VDP NA with Mansfield altimeter setting. When local altimeter setting not received, use Mansfield altimeter setting: increase all MDA 100 feet and visibility Cat C 3/8 SM.</p> <p><b>▲</b> NA</p>		<p><b>MISSED APPROACH:</b> Climb to 3000 direct VIZXO and hold.</p>
AWOS-3 <b>126.625</b>	CLEVELAND APP CON ★ <b>124.2 360.65</b>	



EC-2, 16 MAY 2024 to 13 JUN 2024

EC-2, 16 MAY 2024 to 13 JUN 2024



CATEGORY	A	B	C	D
LNVA MDA	1380-1		377 (400-1)	NA
<b>C</b> CIRCLING	1500-1 492 (500-1)	1540-1 532 (600-1)	1700-2 692 (700-2)	NA