

BUCYRUS, OHIO

AL-6388 (FAA)

23278

VOR BUD <b>109.8</b>	APP CRS <b>208°</b>	Rwy Idg TDZE Apt Elev	<b>3895</b> <b>1003</b> <b>1008</b>
-------------------------	------------------------	-----------------------------	---

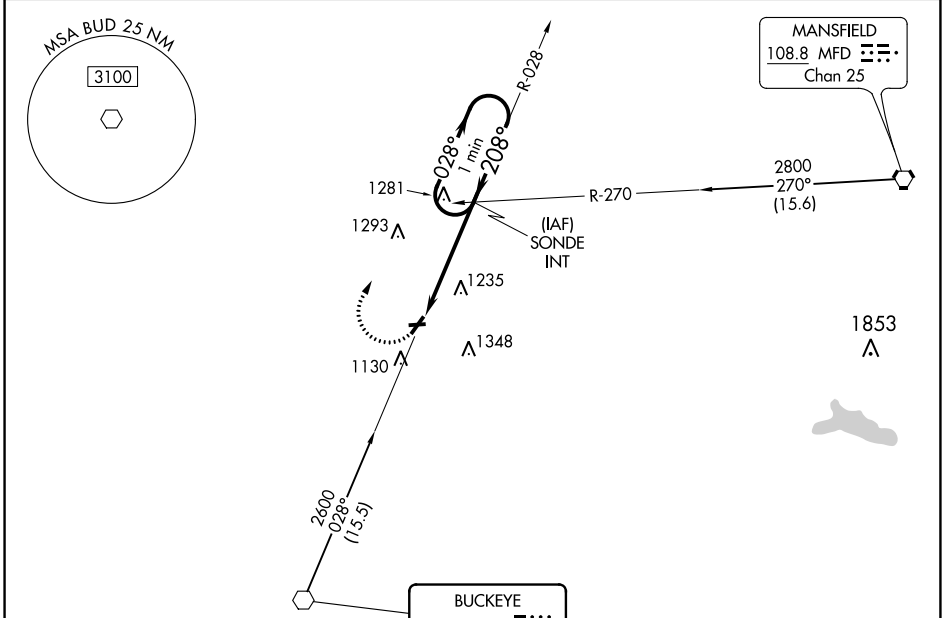
# VOR RWY 22

PORT BUCYRUS/CRAWFORD COUNTY (17G)

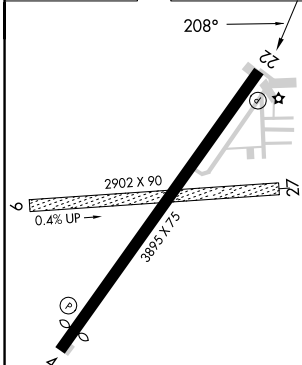
**NA** Circling NA to Rwys 9 and 27. Rwy 22 helicopter visibility reduction below 1 SM NA. Straight-in and Circling Rwy 22 NA at night. When local altimeter setting not received, use Mansfield altimeter setting: increase all MDA 100 feet and visibility Cats B and C ½ SM.

**MISSED APPROACH:** Climbing right turn to 2600 on heading 090° and on BUD VOR R-028 to SONDE INT and hold.

AWOS-3 <b>126.625</b>	CLEVELAND APP CON ★ <b>124.2 360.65</b>	UNICOM <b>122.8 (CTAF) 0</b>
--------------------------	--	---------------------------------



ELEV 1008	TDZE 1003
-----------	-----------

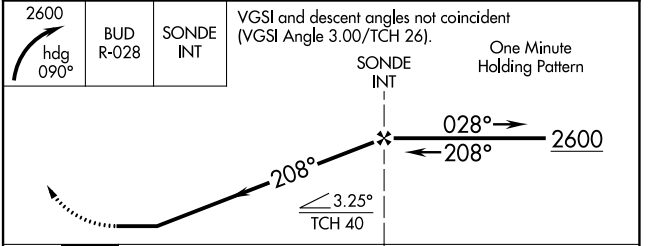


MIRL Rwy 4-22 **1**  
REIL Rwys 4 and 22 **1**

FAF to MAP 4.5 NM

Knots	60	90	120	150	180
Min:Sec	4:30	3:00	2:15	1:48	1:30

**RADAR REQUIRED**



CATEGORY	A	B	C	D
S-22	1700-1	697 (700-1)	1700-2 697 (700-2)	NA
<b>CIRCLING</b>	1700-1	692 (700-1)	1700-2 692 (700-2)	NA

BUCYRUS, OHIO  
Amdt 5A 24MAY18

PORT BUCYRUS/CRAWFORD COUNTY (17G)  
40°47'N-82°58'W

# VOR RWY 22

EC-2, 16 MAY 2024 to 13 JUN 2024

EC-2, 16 MAY 2024 to 13 JUN 2024