

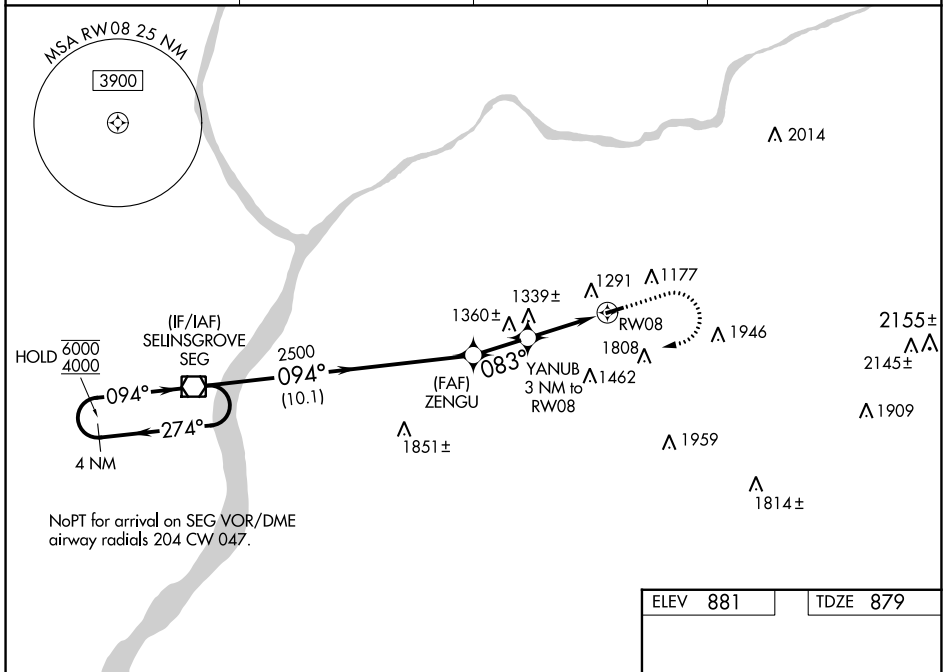
|  |                        |   |
|--|------------------------|---|
| WAAS<br>CH <b>87024</b><br><b>W08A</b> | APP CRS<br><b>083°</b> | Rwy Idg <b>3297</b><br>TDZE <b>879</b><br>Apt Elev <b>881</b> |
|--|------------------------|---|

# RNAV (GPS) RWY 8

NORTHUMBERLAND COUNTY (N79)

|                 |   |   |
|-----------------|---|---|
| RNP APCH - GPS. | <p>Baro-VNAV and VDP NA when using Selinsgrove altimeter setting. Rwy 8 helicopter visibility reduction below 3/4 SM NA. For uncompensated Baro-VNAV systems, LNAV/VNAV NA below -16°C or above 54°C. When local altimeter setting not received, use Selinsgrove altimeter setting and increase LPV DA to 1221 feet; increase LNAV/VNAV DA to 1695 feet and all visibilities 1/2 SM. Increase all MDAs 100 feet and LNAV visibility Cat C 1/2 SM.</p> | <p>MISSED APPROACH:<br/>Climb to 2300 then climbing right turn to 4000 direct SEG VOR/DME and hold.</p> |
|-----------------|---|---|

|                          |  |                               |              |
|--------------------------|--|-------------------------------|--------------|
| AWOS-3<br><b>119.175</b> | HARRISBURG APP CON<br><b>118.25 269.45</b> | UNICOM<br><b>122.8 (CTAF)</b> | <b>121.8</b> |
|--------------------------|--|-------------------------------|--------------|



NE-4, 16 MAY 2024 to 13 JUN 2024

NE-4, 16 MAY 2024 to 13 JUN 2024

NoPT for arrival on SEG VOR/DME airway radials 204 CW 047.

|          |          |
|----------|----------|
| ELEV 881 | TDZE 879 |
|----------|----------|

|                      |                         |                         |                      |                |
|----------------------|-------------------------|-------------------------|----------------------|----------------|
| 4 NM Holding Pattern | SEG VOR/DME             | 2300                    | 4000                 | SEG            |
| 6000 ← 274°          | 094° →                  | ZENGU 2500              | YANUB 3 NM to RW08   | 2.2 NM to RW08 |
| 4000                 |                         | 2500                    | 1840                 |                |
| GP 3.00° TCH 40      |                         | 10.1 NM                 | 2.1 NM               | 0.8 2.2 NM     |
| CATEGORY             | A                       | B                       | C                    | D              |
| LPV DA               |                         | 1129-1 250 (300-1)      |                      | NA             |
| LNAV/VNAV DA         |                         | 1603-2 724 (800-2)      |                      | NA             |
| LNAV MDA             | 1620-1 741 (800-1)      | 1620-1 741 (800-1 1/4)  | 1620-2 741 (800-2)   | NA             |
| CIRCLING             | 1820-1 939 (1000-1 1/4) | 1880-1 999 (1000-1 1/2) | 2120-3 1239 (1300-3) | NA             |