

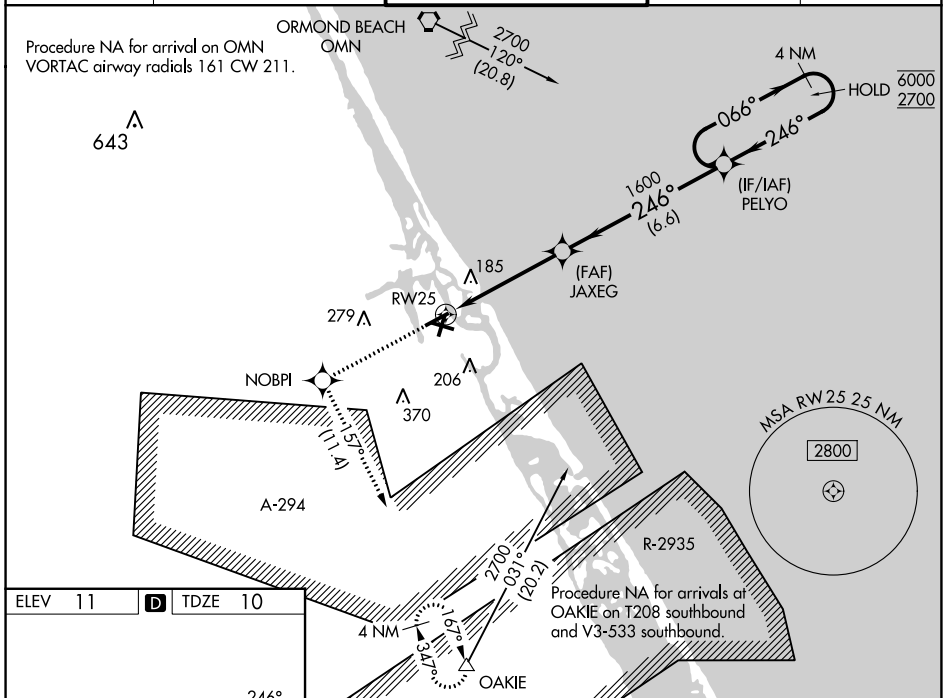
WAAS CH 50500 W25A	APP CRS 246°	Rwy Idg TDZE 10 Apt Elev 11	4463
--	------------------------	---	-------------

RNAV (GPS) RWY 25

NEW SMYRNA BEACH MUNI (EVB)

RNP APCH-GPS.	<p>▼ Rwy 25 helicopter visibility reduction below 1 SM NA. Straight-in Rwy 25 NA at night, Circling Rwy 7, 11, 25 NA at night. When local altimeter setting not received, use Daytona Beach altimeter setting increase LPV DA to 328 feet and all MDA 40 feet. Increase LNAV Cat C visibility 1/8 SM and Circling Cat C visibility 1/4 SM.</p>	MISSED APPROACH: Climb to 4000 direct NOBPI and on track 1.57° to OAKIE and hold, continue climb-in-hold to 4000.
---------------	--	---

ATIS 124.625	DAYTONA APP CON 125.35 322.3	NEW SMYRNA TOWER BEACH* 119.675 (CTAF) 0	GND CON 121.325	UNICOM 122.95
------------------------	--	--	---------------------------	-------------------------



ELEV 11	D	TDZE 10	<p>Procedure NA for arrivals at OAKIE on T208 southbound and V3-533 southbound.</p>	
4000	NOBPI	tr 1.57°	OAKIE	VGSI and RNAV glidepath not coincident (VGSI Angle 3.00/TCH 46).
4000 X 75	4000 X 100	4319 X 75	2	<p>PELYO Holding Pattern</p> <p>066° → 6000 ← 246° 2700</p> <p>JAXEG 1600</p> <p>RWY 25 1600</p> <p>GP 3.00° TCH 60</p> <p>4.7 NM 6.6 NM</p>
LPV	DA	303-1	293 (300-1)	NA
LNAV	MDA	440-1	430 (500-1)	440-1 1/4 430 (500-1 1/4)
C CIRCLING		440-1 429 (500-1)	520-1 509 (600-1)	680-1 3/4 669 (700-1 3/4)

REIL Rws 7 and 25
MIRL Rws 7-25 and 11-29 0

NEW SMYRNA BEACH, FLORIDA
Orig-C 26JAN23

NEW SMYRNA BEACH MUNI (EVB)
RNAV (GPS) RWY 25

29°03'N-80°57'W

SE-3, 16 MAY 2024 to 13 JUN 2024

SE-3, 16 MAY 2024 to 13 JUN 2024