

APP CRS	Rwy Idg	2758
071°	TDZE	193
	Apt Elev	193

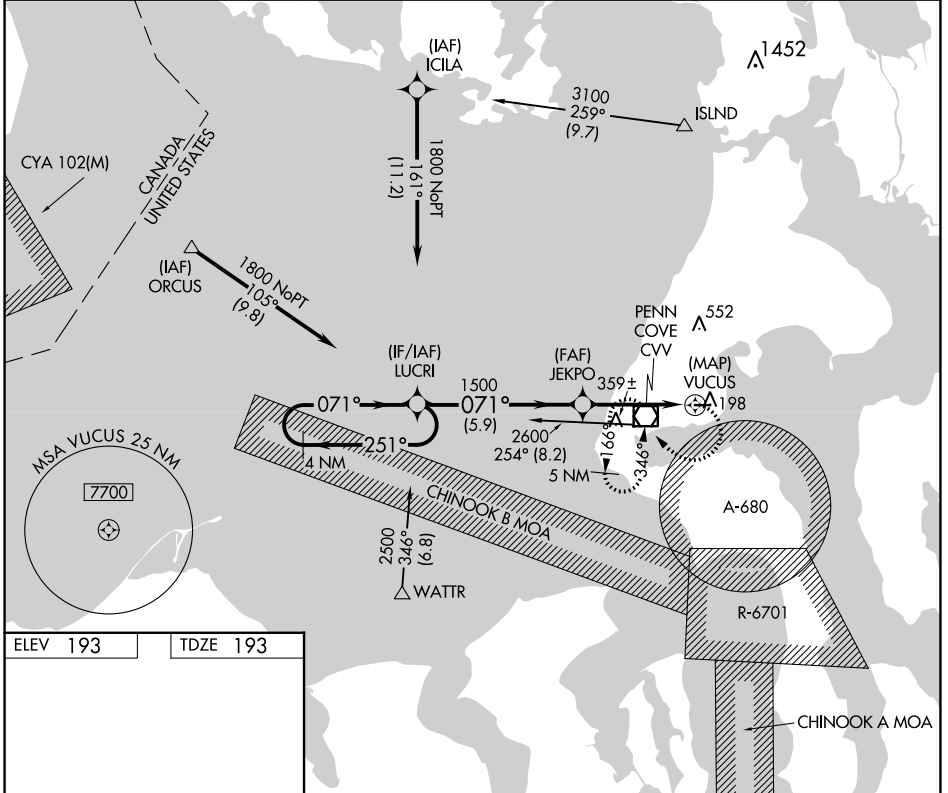
RNAV (GPS) RWY 7

DELAURENTIS (OKH)

▼ DME/DME RNP- 0.3 NA. Helicopter visibility reduction below 3/4 SM NA. Circling north of Rwy 7-25 NA at night.
▲ When local altimeter setting not received, use Whidbey Island NAS (Ault Flt) altimeter setting and increase all MDAs 40 feet. Night landing: Rwy 25 NA.

MISSED APPROACH: Climbing right turn to 3400 direct CVV VOR/DME and hold, continue climb-in-hold to 3400.

AWOS-3 132.775	WHIDBEY APP CON 118.2 285.65	UNICOM 122.8 (CTAF) 0
--------------------------	--	---------------------------------



ELEV 193	TDZE 193
----------	----------

LIRL Rwy 7-25 0

4 NM Holding Pattern	LUCRI	Descent Angle NA.	3400	CVV
1800	← 251°	→ 071°	071°	
		JEKPO	1500	
			VUCUS	
		5.9 NM	4 NM	0.1
CATEGORY	A	B	C	D
LNAV MDA	620-1	427 (500-1)	NA	
CIRCLING	620-1	660-1	NA	
	427 (500-1)	467 (500-1)		

NW-1, 16 MAY 2024 to 13 JUN 2024

NW-1, 16 MAY 2024 to 13 JUN 2024