

RNAV (GPS) RWY 4

ELKHART-MORTON COUNTY (EHA)

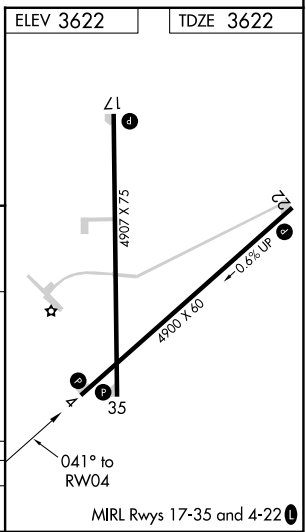
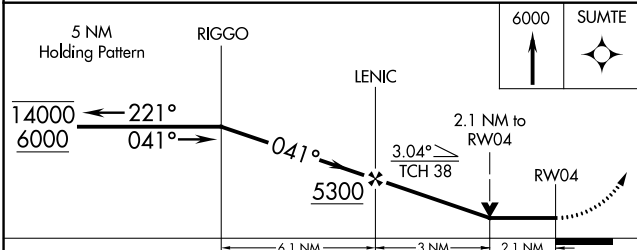
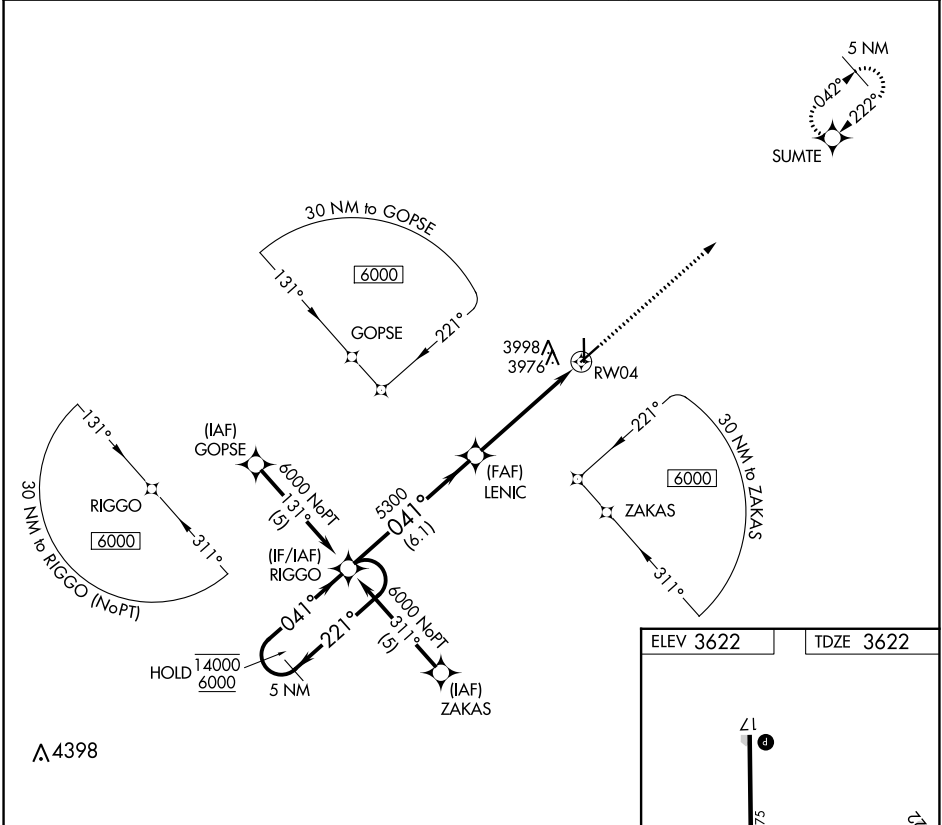
APP CRS 041°	Rwy Idg 4900
	TDZE 3622
	Apt Elev 3622

RNP APCH-GPS.

▽
▲ Rwy 4 helicopter visibility reduction below 3/4 SM NA.

MISSED APPROACH: Climb to 6000 direct SUMTE and hold.

AWOS-3P 118.025	KANSAS CITY CENTER 134.0 257.625	UNICOM 122.8 (CTAF) 0
---------------------------	--	---------------------------------



CATEGORY	A	B	C	D
LNAV MDA	4340-1	718 (800-1)	4340-2	718 (800-2)
				NA

NC-2, 16 MAY 2024 to 13 JUN 2024

NC-2, 16 MAY 2024 to 13 JUN 2024