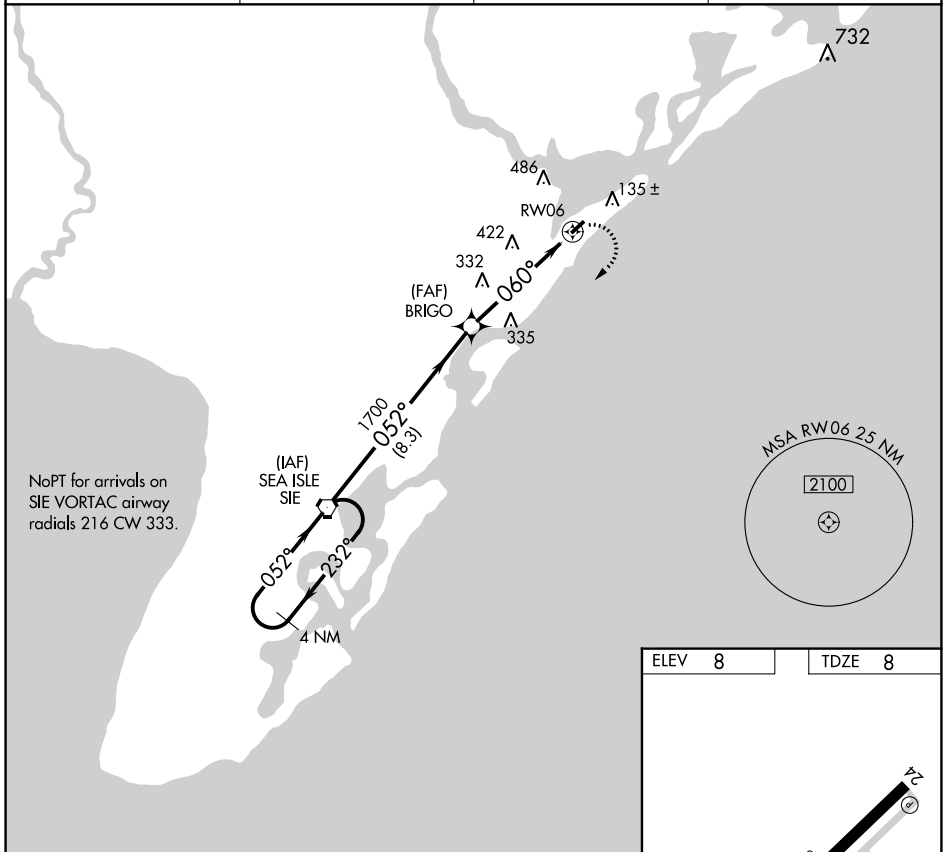


APP CRS	Rwy Idg	2972
060°	TDZE	8
	Apt Elev	8

GPS RWY 6

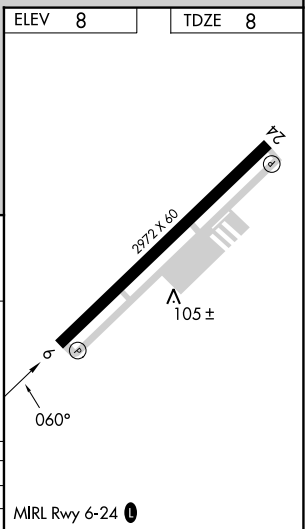
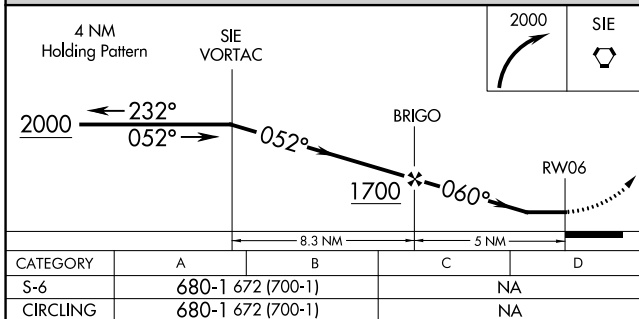
OCEAN CITY MUNI (26N)

<p>⚠ NA When local altimeter setting not received, use Atlantic City altimeter setting.</p>		<p>MISSED APPROACH: Climbing right turn to 2000 direct SIE VORTAC and hold.</p>	
AWOS-AV	ATLANTIC CITY APP CON	CLNC DEL	UNICOM
119.775	124.6 327.125	133.6	122.7 (CTAF) 0



NE-2, 16 MAY 2024 to 13 JUN 2024

NE-2, 16 MAY 2024 to 13 JUN 2024



CATEGORY	A	B	C	D
S-6	680-1 672 (700-1)			NA
CIRCLING	680-1 672 (700-1)			NA