

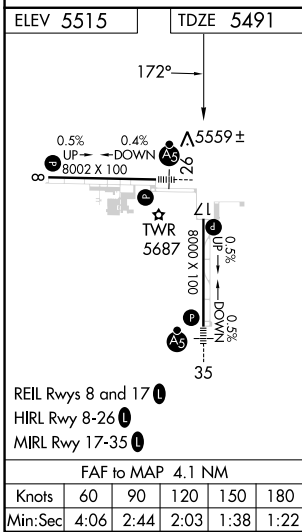
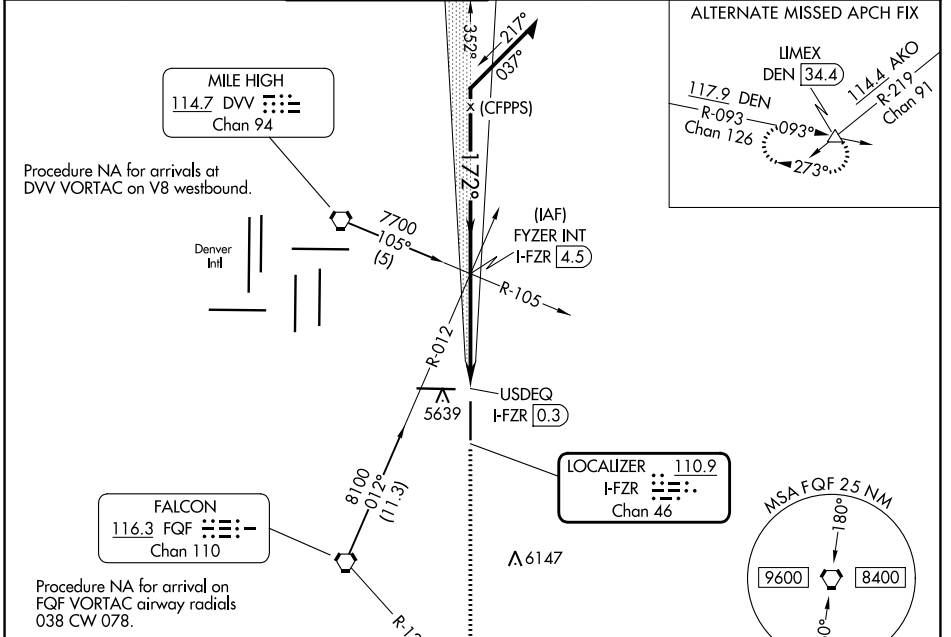
LOC/DME I-FZR 110.9 Chan 46	APP CRS 172°	Rwy Idg TDZE Apt Elev	8000 5491 5515
--	------------------------	-----------------------------	---

ILS or LOC RWY 17

COLORADO AIR AND SPACE PORT (CFO)

MISSED APPROACH: Climb to 8500 on heading 172° and FQF VORTAC R-127 to HUNTN INT/FQF 9.8 DME and hold.

ATIS 119.025	DENVER APP CON 128.25 371.95	SPACE PORT TOWER ★ 120.2 (CTAF)	GND CON 124.7	CLNC DEL 124.7	CLNC DEL 121.75 (When twr closed)	UNICOM 122.95
------------------------	--	---	-------------------------	--------------------------	--	-------------------------



CATEGORY	A	B	C	D
	S-ILS 17	5691-3/4	200 (200-3/4)	
S-LOC 17		5820-1	329 (400-1)	
CIRCLING	6000-1	485 (500-1)	6100-1 1/2 585 (600-1 1/2)	6300-2 1/2 785 (800-2 1/2)

Remain within 10 NM

FYZER INT I-FZR 4.5

7000 7000

352° 172°

GS 3.00° TCH 55

USDEQ I-FZR 0.3

8500 hdg 172°

FQF R-127 HUNTN

112.9 TXC Chan 76

4.1 NM 0.5 NM

SW-1, 16 MAY 2024 to 13 JUN 2024

SW-1, 16 MAY 2024 to 13 JUN 2024