

LOC/DME I-FTG <b>109.3</b> Chan <b>30</b>	APP CRS <b>263°</b>	Rwy Idg TDZE Apt Elev	<b>8002</b> <b>5489</b> <b>5515</b>
---	------------------------	-----------------------------	---

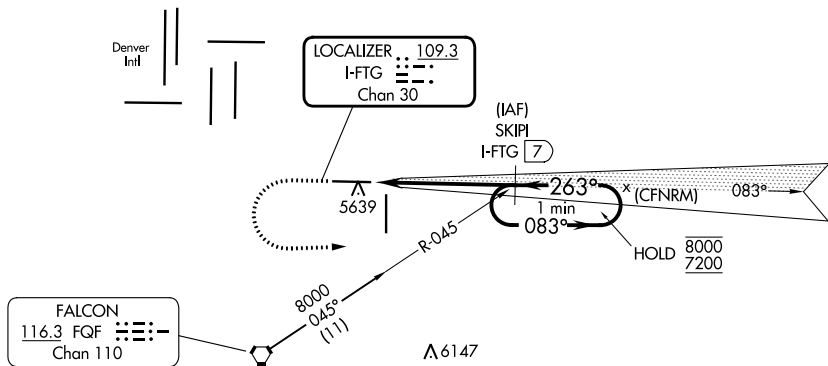
# ILS or LOC RWY 26

COLORADO AIR AND SPACE PORT (CFO)

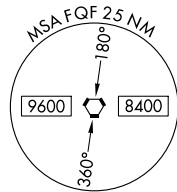
DME required.		MALSR	MISSED APPROACH: Climb to 6100 then climbing left turn to 7200 on heading 080° and on FQF VORTAC R-045 to SKIPI/I-FTG 7 DME and hold.						
▼ For inop ALS, increase S-LOC 26 Cat C/D visibility to 1 1/2 SM. Autopilot coupled approach NA below 6250 MSL. ▲			ATIS <b>119.025</b>	DENVER APP CON <b>128.25 371.95</b>	SPACE PORT TOWER * <b>120.2 (CTAF)</b>	GND CON <b>124.7</b>	CLNC DEL <b>124.7</b>	CLNC DEL <b>121.75</b> (When twr closed)	UNICOM <b>122.95</b>

SW-1, 16 MAY 2024 to 13 JUN 2024

SW-1, 16 MAY 2024 to 13 JUN 2024

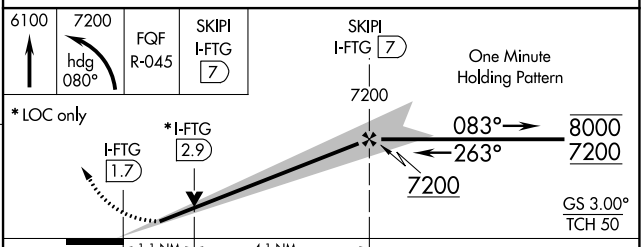
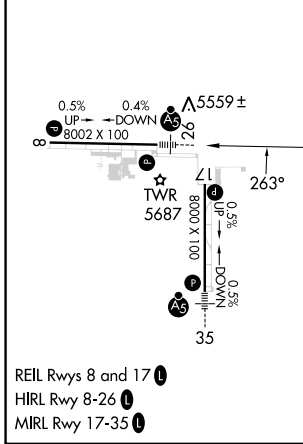


Procedure NA for arrival on FQF VORTAC airway radials 038 CW 078.



ELEV 5515	TDZE 5489
-----------	-----------

▲ 6529



CATEGORY	A	B	C	D
S-ILS 26	5689-1/2 200 (200-1/2)			
S-LOC 26	5900-1/2 411 (400-1/2)		5900-3/4 411 (400-3/4)	
<b>C</b> CIRCLING	6000-1 485 (500-1)		6100-1 1/2 585 (600-1 1/2)	6300-2 1/2 785 (800-2 1/2)