

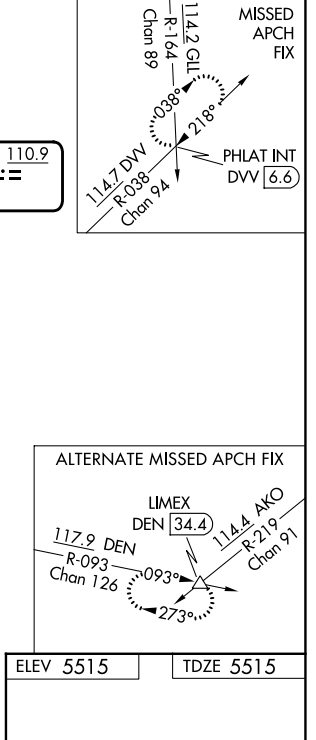
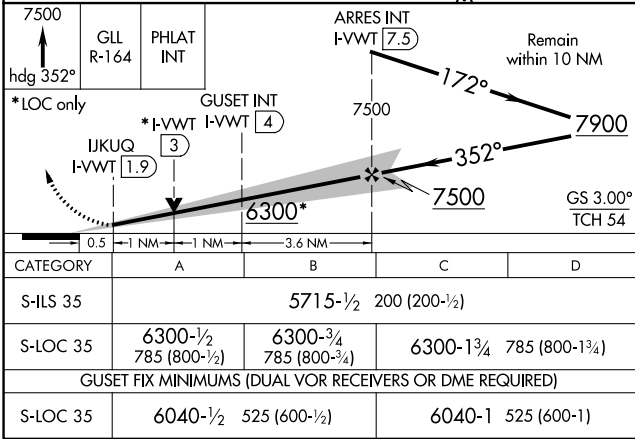
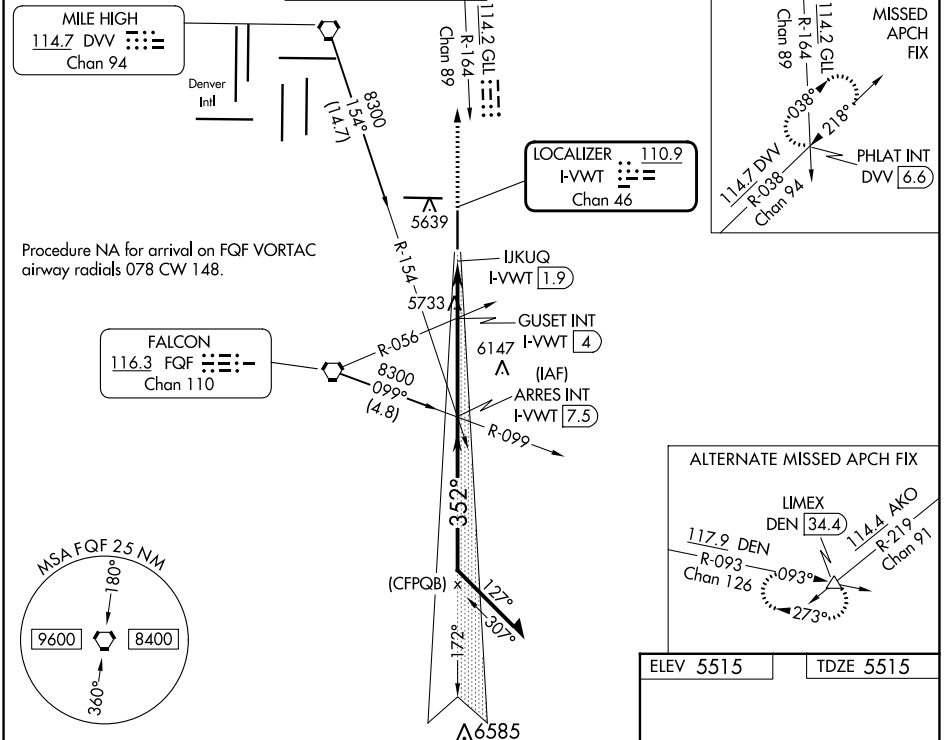
LOC/DME I-VVWT <b>110.9</b> Chan 46	APP CRS <b>352°</b>	Rwy Idg TDZE Apt Elev <b>8000</b> <b>5515</b> <b>5515</b>
---	------------------------	--

# ILS or LOC RWY 35

COLORADO AIR AND SPACE PORT (CFO)

<b>⚠</b> For inop ALS, increase S-LOC 35 Cats C and D visibility to 2½ SM.	MALSR	MISSED APPROACH: Climb to 7500 on heading 352° and on GLL VOR/DME R-164 to PHLAT INT/DVV 6.6 DME and hold.
--	-------	--

ATIS <b>119.025</b>	DENVER APP CON <b>128.25 371.95</b>	SPACE PORT TOWER * <b>120.2 (CTAF)</b>	GND CON <b>124.7</b>	CLNC DEL <b>124.7</b>	CLNC DEL <b>121.75</b> (When twr closed)	UNICOM <b>122.95</b>
------------------------	--	---	-------------------------	--------------------------	--	-------------------------



ELEV 5515	TDZE 5515
REIL Rwy 8 and 17	
HIRL Rwy 8-26	
MIRL Rwy 17-35	
FAF to MAP 5.6 NM	
Knots	60 90 120 150 180
Min:Sec	5:36 3:44 2:48 2:14 1:52

SW-1, 16 MAY 2024 to 13 JUN 2024

SW-1, 16 MAY 2024 to 13 JUN 2024