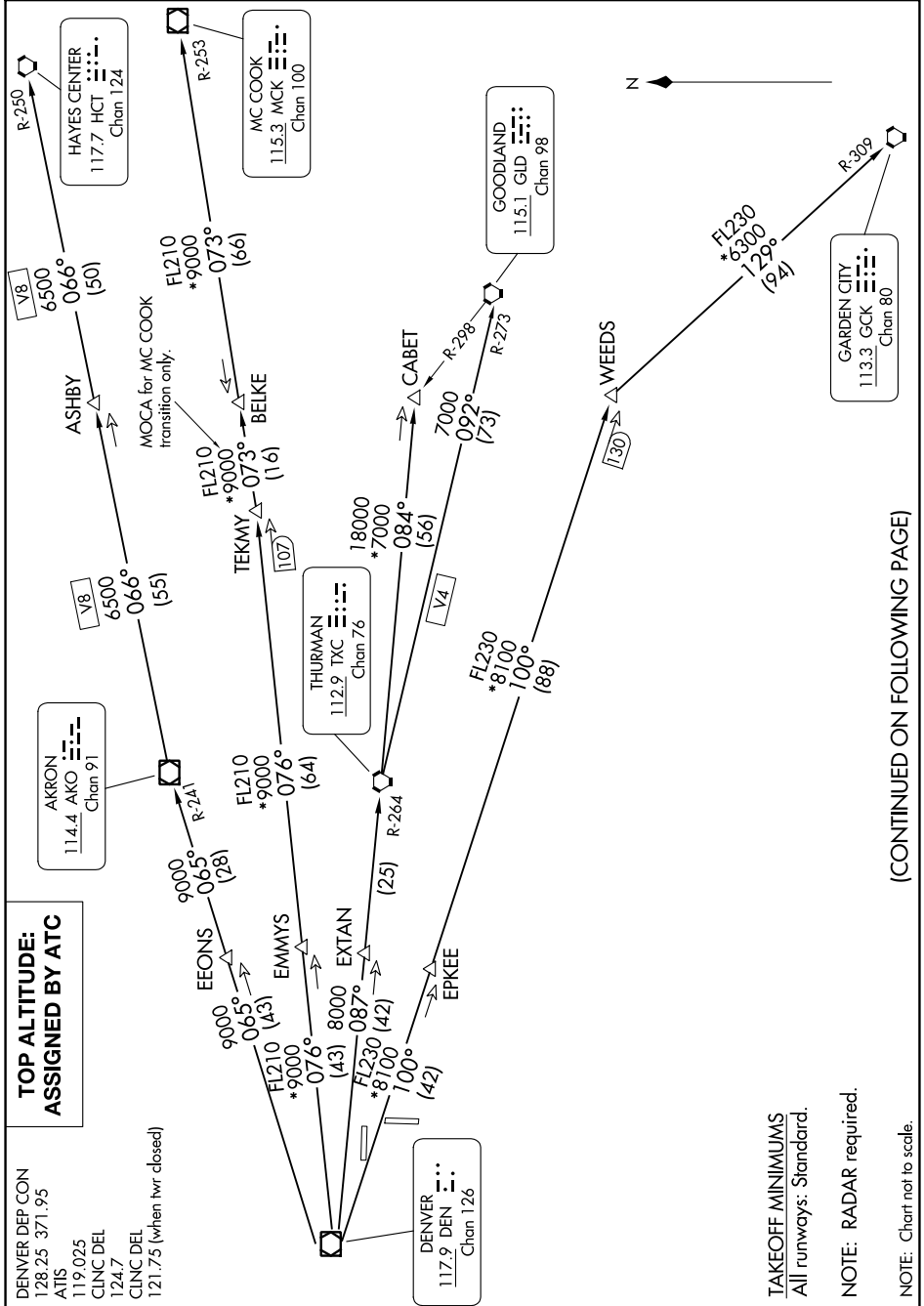


PLAINS ONE DEPARTURE

AL-6851 (FAA)

COLORADO AIR AND SPACE PORT (CFO)
DENVER, COLORADO

SW-1, 16 MAY 2024 to 13 JUN 2024



**TOP ALTITUDE:
ASSIGNED BY ATC**

DENVER DEP CON
128.25 371.95
ATIS
119.025
CLINC DEL
124.7
CLINC DEL
121.75 (when hvr. closed)

TAKEOFF MINIMUMS
All runways: Standard.

NOTE: RADAR required.

NOTE: Chart not to scale.

(CONTINUED ON FOLLOWING PAGE)

SW-1, 16 MAY 2024 to 13 JUN 2024

PLAINS ONE DEPARTURE

DENVER, COLORADO
COLORADO AIR AND SPACE PORT (CFO)