

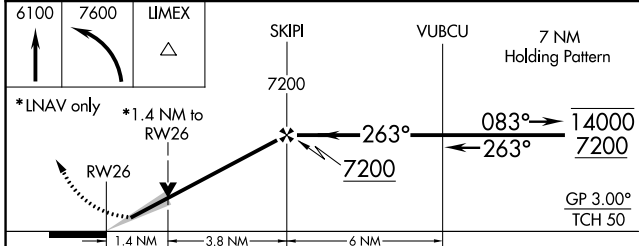
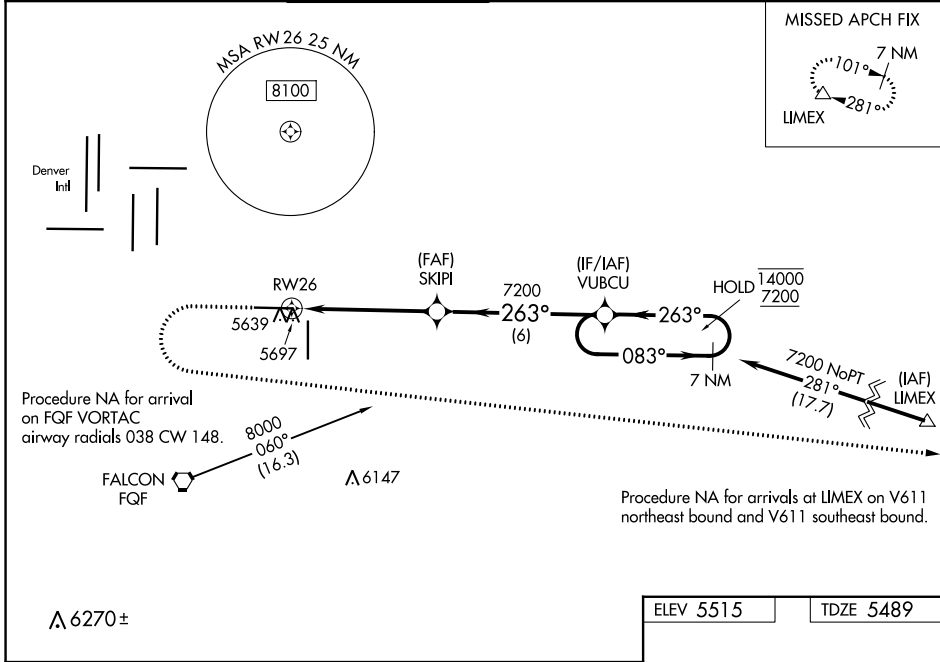
WAAS CH <b>93909</b> <b>W26A</b>	APP CRS <b>263°</b>	Rwy Idg TDZE Apt Elev	<b>8002</b> <b>5489</b> <b>5515</b>
--	------------------------	-----------------------------	---

# RNAV (GPS) RWY 26

COLORADO AIR AND SPACE PORT (CFO)

RNP APCH.	MALSR	MISSED APPROACH: (Do not exceed 200K until LIMEX) Climb to 6100 then climbing left turn to 7600 direct LIMEX and hold.
<p><b>⚠</b> For uncompensated Baro-VNAV systems, LNAV/VNAV NA below -25°C or above 48°C. For inop ALS, increase LNAV/VNAV all Cats visibility to 1½ SM, and increase LNAV Cat C/D visibility to 1½ SM.</p>		

ATIS <b>119.025</b>	DENVER APP CON <b>128.25 371.95</b>	SPACE PORT TOWER * <b>120.2 (CTAF) 1</b>	GND CON <b>124.7</b>	CLNC DEL <b>124.7</b>	CLNC DEL <b>121.75</b> (When twr closed)	UNICOM <b>122.95</b>
------------------------	--	---	-------------------------	--------------------------	--	-------------------------



ELEV 5515	TDZE 5489
-----------	-----------

Δ 5559±

0.5% UP 0.4% DOWN

8002 X 100

TWR 5687

GP 3.00 TCH 50

35

REIL Rwy 8 and 17  
HIRL Rwy 8-26  
MIRL Rwy 17-35

CATEGORY	A	B	C	D
LPV DA		5689-½	200 (200-½)	
LNAV/VNAV DA		5858-¾	369 (400-¾)	
LNAV MDA	5960-½	471 (500-½)	5960-1	471 (500-1)
CIRCLING	6000-1	485 (500-1)	6100-1½ 585 (600-1½)	6300-2½ 785 (800-2½)

SW-1, 16 MAY 2024 to 13 JUN 2024

SW-1, 16 MAY 2024 to 13 JUN 2024