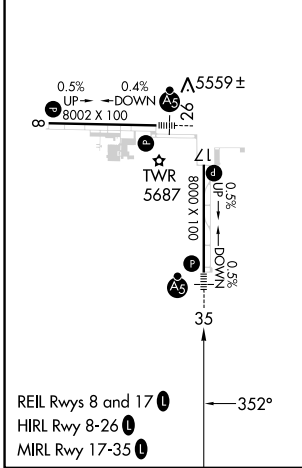
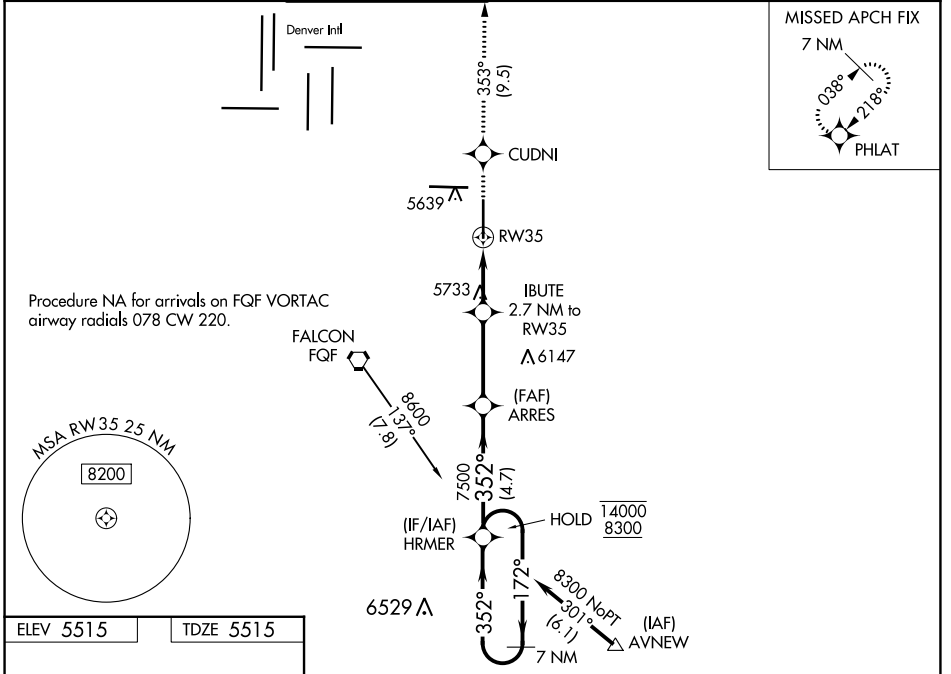


WAAS CH <b>93809</b> <b>W35A</b>	APP CRS <b>352°</b>	Rwy Idg TDZE Apt Elev	<b>8000</b> <b>5515</b> <b>5515</b>
--	------------------------	-----------------------------	---

# RNAV (GPS) RWY 35

COLORADO AIR AND SPACE PORT (CFO)

RNP APCH. ⚠ For uncompensated Baro-VNAV systems, LNAV/VNAV NA below -25°C or above 46°C. For inop ALS, increase LNAV/VNAV all Cats visibility to 3/8 SM.		MALSR 	MISSED APPROACH: Climb to 8000 direct CUDNI and on track 353° to PHLAT and hold.			
ATIS <b>119.025</b>	DENVER APP CON <b>128.25 371.95</b>	SPACE PORT TOWER* <b>120.2 (CTAF)</b>	GND CON <b>124.7</b>	CLNC DEL <b>124.7</b>	CLNC DEL <b>121.75</b> (When twr closed)	UNICOM <b>122.95</b>



8000	CUDNI	tr 353°	PHLAT	HRMER	7 NM Holding Pattern
*LNAV only		IBUTE 2.7 NM to RW35	7500	172° → 14000	← 352° 8300
*1.5 NM to RW35		6420*	7500	GP 3.00° TCH 54	
1.5 NM		1.2 NM	3.4 NM	4.7 NM	
CATEGORY	A	B	C	D	
LPV DA	5715-1/2		200 (200-1/2)		
LNAV/VNAV DA	5783-1/2		268 (300-1/2)		
LNAV MDA	6040-1/2 525 (600-1/2)		6040-1 525 (600-1)		
<input checked="" type="checkbox"/> CIRCLING	6040-1 525 (600-1)		6100-1 1/2 585 (600-1 1/2)		6300-2 1/2 785 (800-2 1/2)

SW-1, 16 MAY 2024 to 13 JUN 2024

SW-1, 16 MAY 2024 to 13 JUN 2024