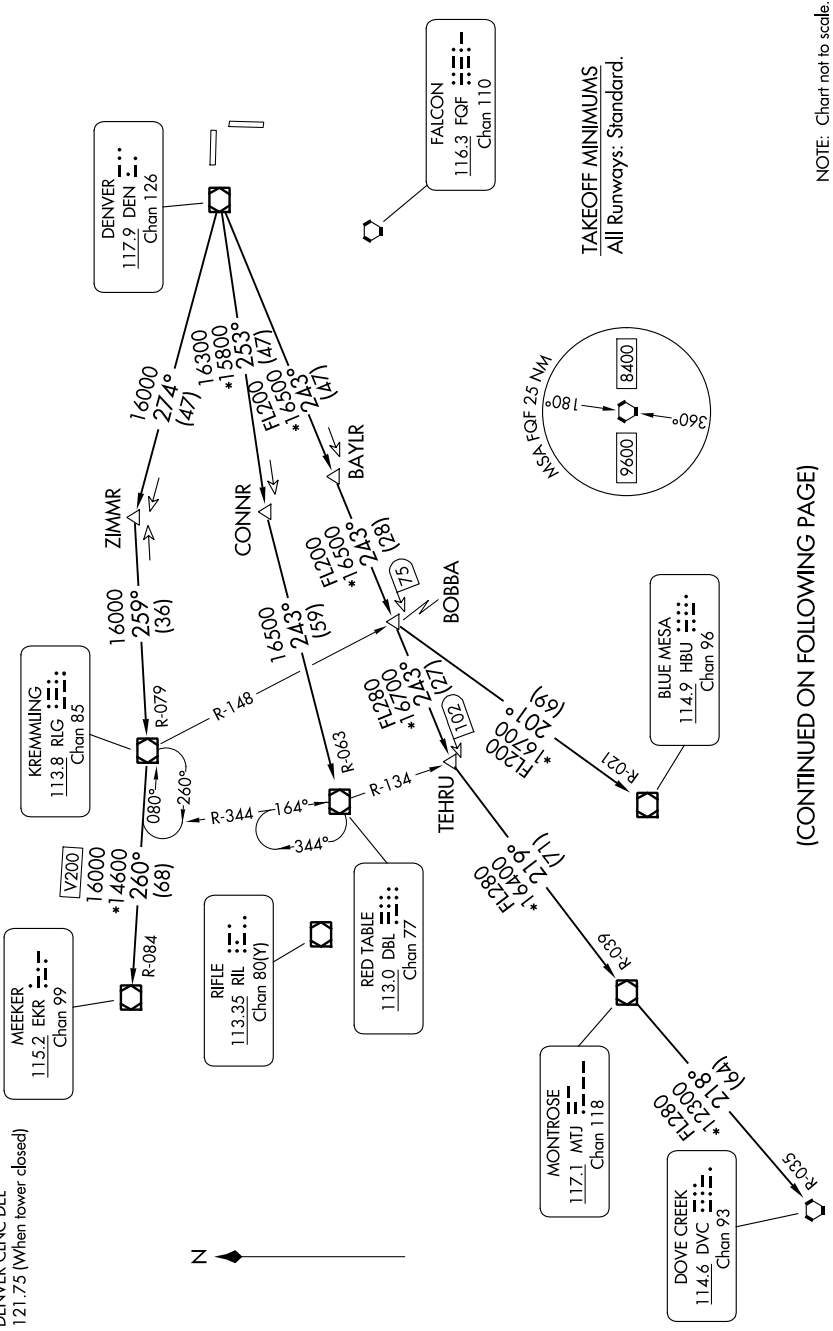


SW-1, 16 MAY 2024 to 13 JUN 2024

**TOP ALTITUDE:
ASSIGNED BY ATC**

RADAR required.

DENVER DEP CON
128.25 371.95
CINC DEL
124.7
DENVER CLNC DEL
121.75 (When tower closed)



(CONTINUED ON FOLLOWING PAGE)

NOTE: Chart not to scale.

SW-1, 16 MAY 2024 to 13 JUN 2024