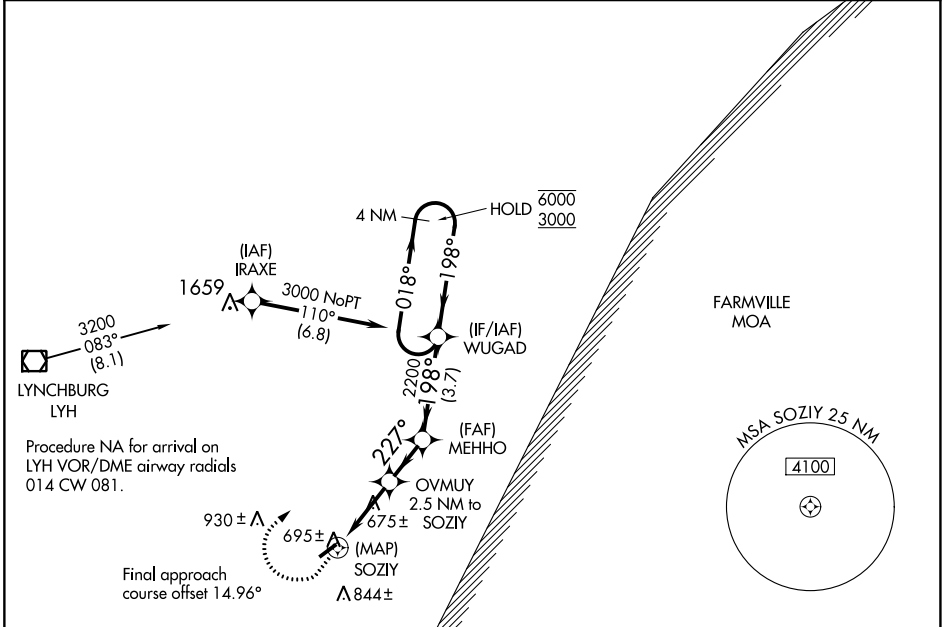


WAAS CH 97334 W24A	APP CRS 227°	Rwy Idg TDZE 596 Apt Elev 597
--	------------------------	---

RNAV (GPS) RWY 24
BROOKNEAL/CAMPBELL COUNTY (ØV4)

RNP APCH.	MISSED APPROACH: Climb to 1000 then climbing right turn to 3000 direct WUGAD and hold.
▼ When local altimeter setting not received, use Lynchburg Rgnl/Preston Glenn Fld altimeter setting and increase all MDA 100 feet.	

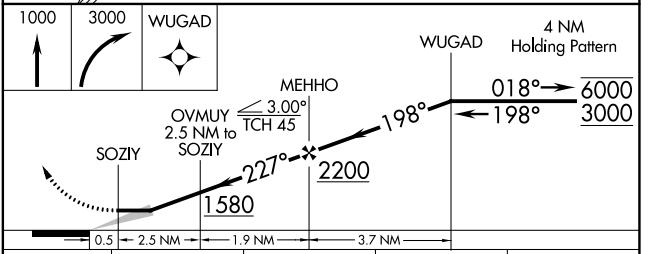
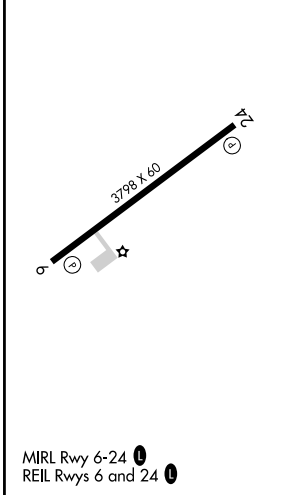
AWOS-3 120.575	ROANOKE APP CON 135.0 254.325	UNICOM 122.7 (CTAF) Ø
--------------------------	---	---------------------------------



NE-3, 16 MAY 2024 to 13 JUN 2024

NE-3, 16 MAY 2024 to 13 JUN 2024

ELEV 597	TDZE 596
----------	----------



CATEGORY	A	B	C	D
LP MDA	940-1	344 (400-1)		NA
LNAV MDA	960-1	364 (400-1)		NA
CIRCLING	1120-1 523 (600-1)	1180-1 583 (600-1)		NA