

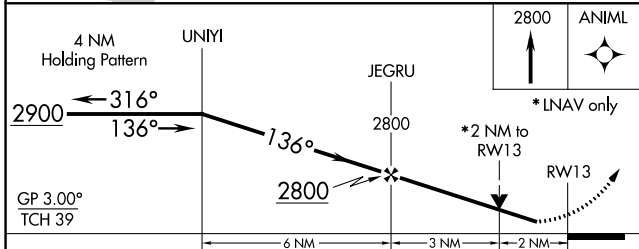
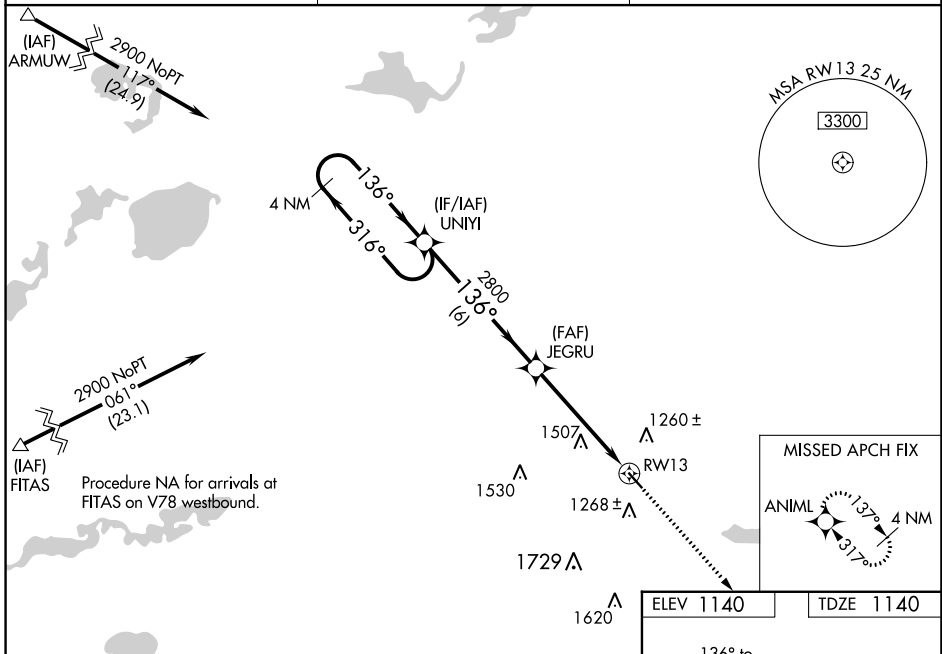
WAAS CH 69419 W13A	APP CRS 136°	Rwy Idg TDZE Apt Elev	4002 1140 1140
--	------------------------	-----------------------------	---

RNAV (GPS) RWY 13

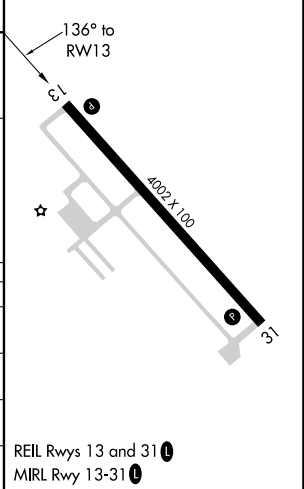
LITCHFIELD MUNI (LJF)

RNP APCH - GPS.	<p>▼ Baro-VNAV NA when using Hutchinson altimeter setting. For uncompensated Baro-VNAV systems, LNAV/VNAV NA below -17°C or above 54° C. Visibility reduction by helicopters</p> <p>▲ NA. When local altimeter setting not received, use Hutchinson altimeter setting: increase LPV DA to 1436 feet; increase LNAV/VNAV DA to 1980 feet and visibility all Cats ¼ SM; increase all MDA 60 feet and Circling Cat C visibility ¼ SM. VDP NA with Hutchinson altimeter setting.</p>	MISSED APPROACH: Climb to 2800 direct ANIML and hold.
-----------------	--	--

AWOS-3 119.65	MINNEAPOLIS CENTER 125.5 323.1	CTAF 122.9 0
-------------------------	--	------------------------



ELEV 1140	TDZE 1140
-----------	-----------



CATEGORY	A	B	C	D
LPV DA	1390-1 250 (300-1)			
LNAV/VNAV DA	1934-2¾ 794 (800-2¾)			
LNAV MDA	1820-1 680 (700-1)	1820-2 680 (700-2)	1820-2¼ 680 (700-2¼)	
CIRCLING	1820-1 680 (700-1)	1860-2 720 (800-2)	2080-3 940 (1000-3)	

NC-1, 16 MAY 2024 to 13 JUN 2024

NC-1, 16 MAY 2024 to 13 JUN 2024