

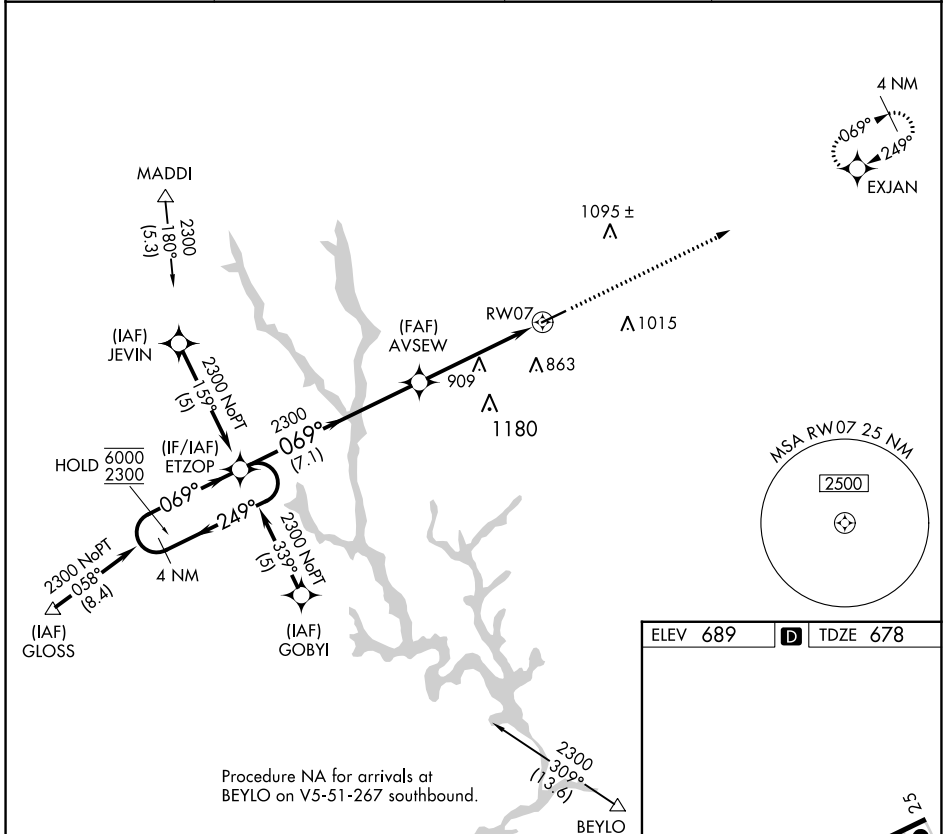
APP CRS	Rwy Idg	<b>5401</b>
<b>069°</b>	TDZE	<b>678</b>
	Apt Elev	<b>689</b>

# RNAV (GPS) RWY 7

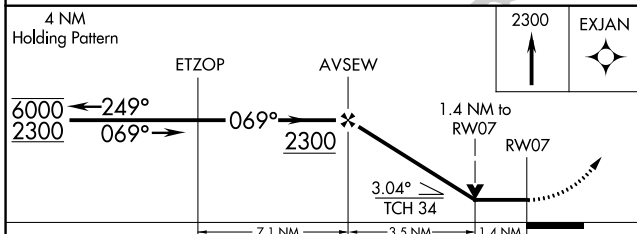
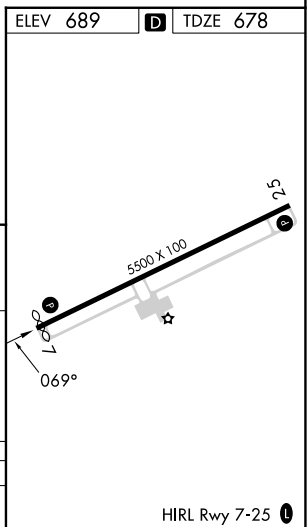
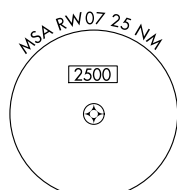
GREENE COUNTY RGNL (CPP)

RNP APCH - GPS.		MISSED APPROACH: Climb to 2300 direct EXJAN and hold.
Rwy 7 helicopter visibility reduction below 3/4 SM NA.		

AWOS-3 <b>124.525</b>	ATLANTA APP CON * <b>132.475 291.1</b>	GCO <b>121.725</b>	UNICOM <b>122.8(CTAF) 0</b>
--------------------------	---	-----------------------	--------------------------------



Procedure NA for arrivals at BEYLO on V5-51-267 southbound.



CATEGORY	A	B	C	D
LNAV MDA	1160-1	482 (500-1)	1160-1 3/8	482 (500-1 3/8)

SE-4, 16 MAY 2024 to 13 JUN 2024

SE-4, 16 MAY 2024 to 13 JUN 2024