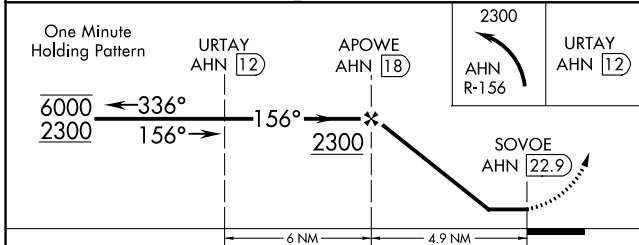
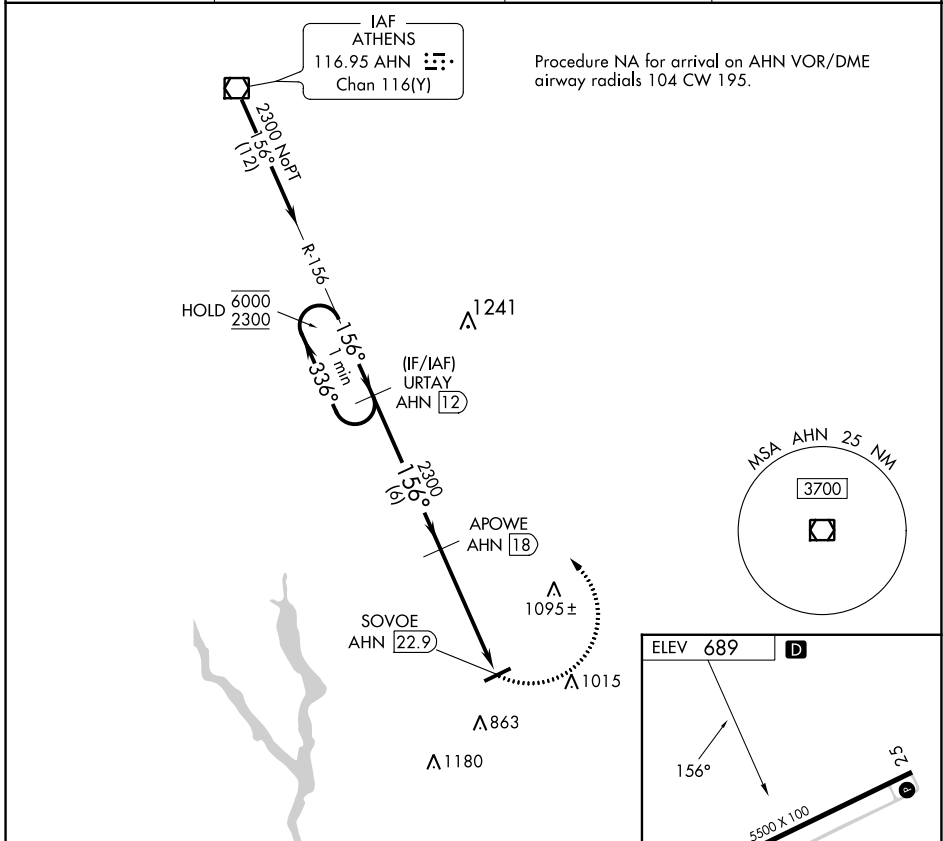


VOR/DME AHN 116.95 Chan 116 (Y)	APP CRS 156°	Rwy Idg TDZE Apt Elev	N/A N/A 689
---	------------------------	-----------------------------	--

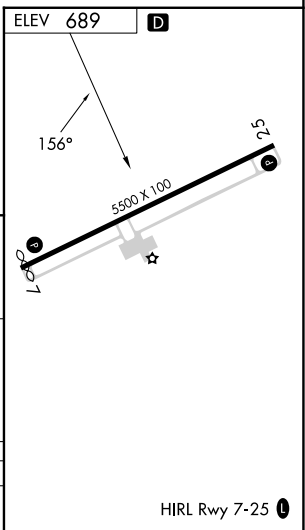
VOR-B
GREENE COUNTY RGNL (CPP)

DME Required.		MISSED APPROACH: Climbing left turn to 2300 on AHN VOR/DME R-156 to URTAY/AHN 12 DME and hold.	
---------------	--	--	--

AWOS-3 124.525	ATLANTA APP CON * 132.475 291.1	GCO 121.725	UNICOM 122.8 (CTAF)
--------------------------	---	-----------------------	-------------------------------



CATEGORY	A	B	C	D
C CIRCLING	1240-1	551 (600-1)	1320-1 ³ / ₄ 631 (700-1 ³ / ₄)	1480-2 ¹ / ₂ 791 (800-2 ¹ / ₂)



HIRL Rwy 7-25

SE-4, 16 MAY 2024 to 13 JUN 2024

SE-4, 16 MAY 2024 to 13 JUN 2024