

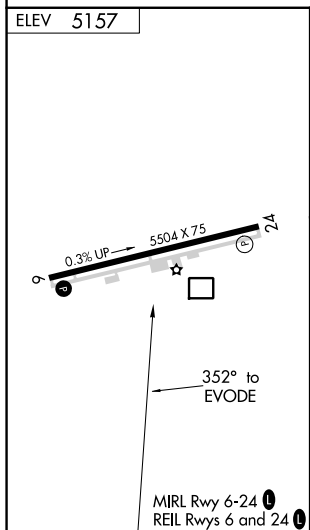
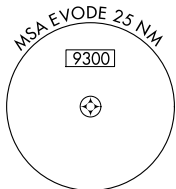
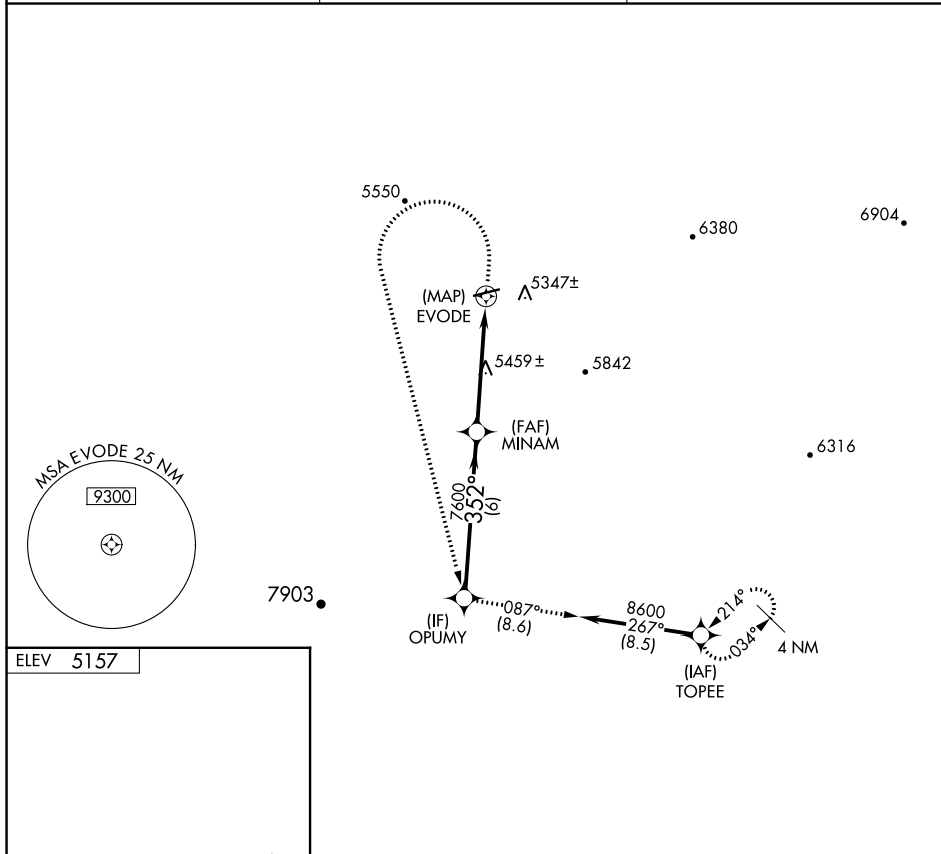
APP CRS 352°	Rwy Idg TDZE Apt Elev	N/A N/A 5157
------------------------	-----------------------------	---

RNAV (GPS)-A

PAYSON (P.AN)

NA GPS or RNP-0.3 required. DME/DME RNP-0.3 NA. MISSED APPROACH: Climb to 6700 then climbing left turn to 9000 direct OPUMY WP and via 087° track to TOPEE WP and hold.

AWOS-3PT 119.325	ALBUQUERQUE CENTER 127.675 306.2	UNICOM 122.8 (CTAF)
----------------------------	--	-------------------------------



	OPUMY	6700	9000	OPUMY	tr 087°	TOPEE
	8600	MINAM		EVODE		
Procedure Turn	NA	7600				
	6 NM		4.9 NM			
CATEGORY	A	B	C	D		
CIRCLING	5700-1 543 (600-1)	5760-1 603 (700-1)	5860-2 703 (800-2)	6060-3 903 (1000-3)		

SW-4, 16 MAY 2024 to 13 JUN 2024

SW-4, 16 MAY 2024 to 13 JUN 2024