

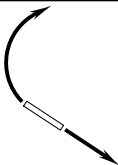
# SKYEE ONE DEPARTURE (RNAV)

AL-9041 (FAA)

VANCE BRAND (LMO)  
LONGMONT, COLORADO

DENVER DEP CON  
125.12 263.02

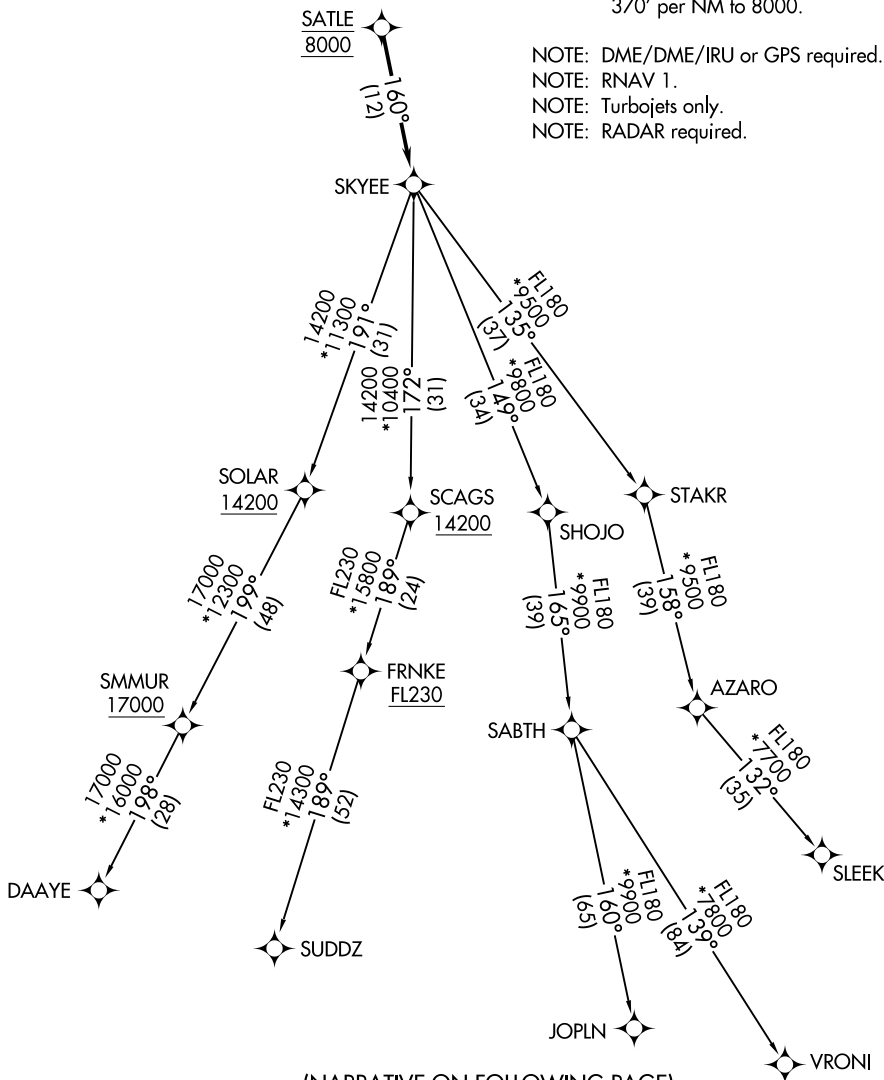
**TOP ALTITUDE:  
FL230**



### TAKEOFF MINIMUMS

Rwy 11: Standard.  
Rwy 29: Standard with minimum climb of  
370' per NM to 8000.

NOTE: DME/DME/IRU or GPS required.  
NOTE: RNAV 1.  
NOTE: Turbojets only.  
NOTE: RADAR required.



NOTE: Chart not to scale.

(NARRATIVE ON FOLLOWING PAGE)

SW-1, 16 MAY 2024 to 13 JUN 2024

SW-1, 16 MAY 2024 to 13 JUN 2024

# SKYEE ONE DEPARTURE (RNAV)

(SKYEE1 .SKYEE) 26MAR20

LONGMONT, COLORADO  
VANCE BRAND (LMO)